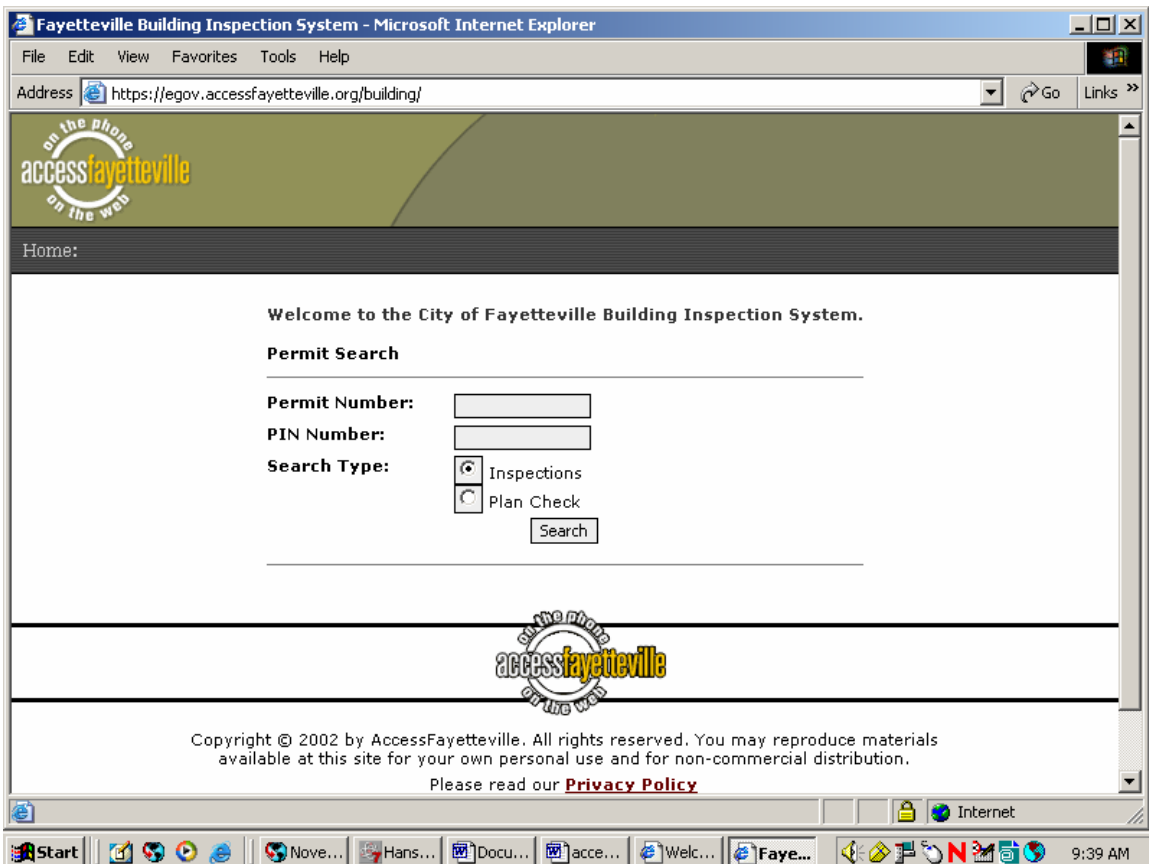




The City of Fayetteville, Arkansas

## BUILDING SAFETY DIVISION

We are happy to announce that you may now check on the status of your application and schedule or check status of inspections on-line. Go to [accessfayetteville.org](http://accessfayetteville.org) and in the center of the page, find **Building Permits and Inspections**, click on this and it will take you to <http://egov.accessfayetteville.org/building/>.



Save this to your desktop for easy access.

Enter your permit (application) number and your PIN. Your PIN is your contractor number or, if you are not a contractor enter the phone number you submitted for the contact person (including the area code ie:4795758233 no spaces). Select if you want an Inspection or Plan Check then click on **Search**.

## TO SCHEDULE OR CHECK INSPECTION RESULTS

**Inspection Results**

Permit Number: 20207  
 Permit Status: (O)pen  
 Address: 1846 SOUTH RIVER MEADOWS DRIVE

**Scheduled Inspections**

Inspection	Type Number	Partial	Scheduled	Scheduled Date	Comments
New Inspection					

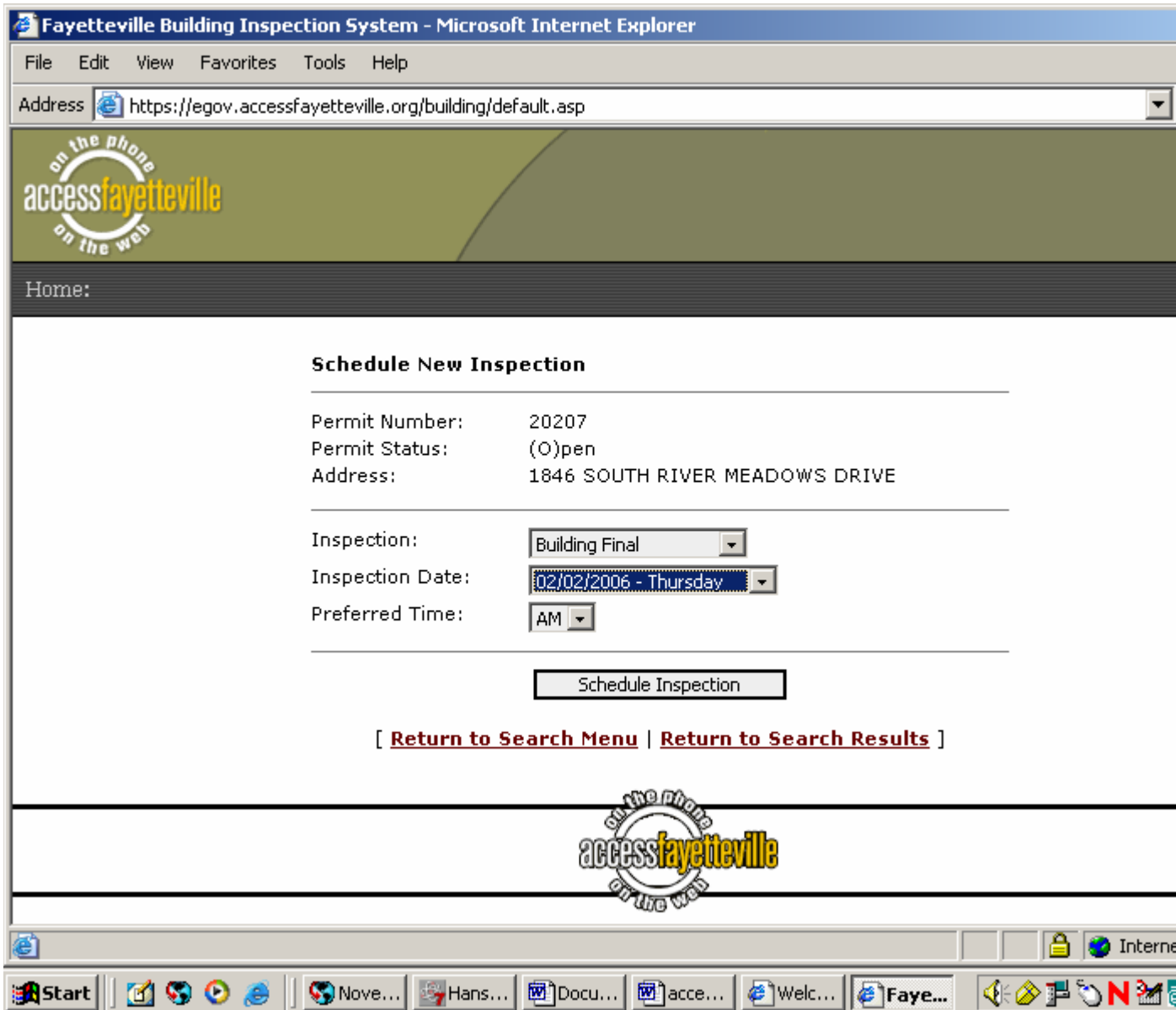
**Completed Inspections**

Inspection	Type Number	Status	Partial	Completed Date/Time	Inspected By	Waived
Temp. Electric Service	1	Passed	N	12/13/2005 16:08	2673	N
Footing	2	Passed	N	11/14/2005 16:40	2562	N
Footing	1	Failed	N	11/10/2005 11:25	2636	N
Framing w/Insulation	2	Failed	N	1/4/2006 16:23	2636	N
Framing w/Insulation	3	Passed	N	1/6/2006 16:34	2636	N
Framing w/Insulation	1	Failed	N	1/4/2006 12:45	2636	N
Slab	1	Passed	N	12/2/2005 15:55	2636	N

This screen is where you schedule inspections and check inspection results. The bottom portion tells what inspections have been scheduled and the status

of that inspection, either Passed or Failed. If you had previously scheduled an inspection, the results would be here.

In the top portion, notice that no inspections are currently scheduled. To schedule an inspection, click over **New Inspection**. *At this time, we are asking that you please call in for your framing and final inspections.* **PLEASE** note that inspections for the next day need to be scheduled before midnight 12 p.m.



Notice that you have drop down boxes, select the inspection type and the date the inspection is needed (inspections can only be schedule for 1 - 14

days out, no same day inspections). After making your choices click over the **Schedule Inspection** tab. If you have an emergency please call the office at 479-575-8233.

**TIPS:**

1. Inspection Failed? Violations appear when another inspection is scheduled.
2. Need to change the date of an inspection? You can **Cancel** or **Reschedule** an inspection IF it is done before the day it was scheduled to be inspected. We ask that you call the office to cancel or reschedule for same day inspections.