

## **City of Fayetteville, Arkansas Second Quarter 2011 Management Report:**

### **Elected Officials:**

<b>Mayor</b>	Lioneld Jordan			
<b>City Attorney</b>	Kit Williams			
<b>City Clerk</b>	Sondra Smith			
<b>City Council Members</b>	Rhonda Adams	Bobby Ferrell	Adella Gray	Mark Kinion
	Sarah Lewis	Matthew Petty	Justin Tennant	Brenda Thiel
<b>District Court Judge</b>	Rudy Moore, Jr.			

### **Executive Staff:**

David Dayringer	Fire Chief
Don Marr	Chief of Staff
Greg Tabor	Acting Police Chief
Shawna Thorup	Executive Director, Fayetteville Public Library

### **Senior Department Directors:**

Paul A. Becker	Finance & Internal Services Director
Connie Edmonston	Parks & Recreation Department Director
Terry Gulley	Transportation Services Department Director
David Jurgens	Utilities Department Director
Jeremy Pate	Development Services Department Director
Lindsley Smith	Communications Director

### **Department Directors:**

John Coleman	Sustainability Department Director
Vicki Deaton	Internal Audit Department Director
Karen Minkel	Strategic Planning & Internal Consulting Director

### **Division Heads:**

Ray Boudreaux	Airport Director
Chris Brown	City Engineer
Sharon Waters	Parking & Telecommunications Manager
Yolanda Fields	Community Services Director
Fritz Gisler	Government Channel Manager
Scott Huddleston	Information Technologies Department Director
Missy Leflar	Human Resources Department Director

**Division Heads: (continued)**

Marsha Hertweck	Accounting Director
Carrol Hill	Solid Waste Manager
Casey Jones	City Prosecutor
Rainy Laycox	Billing & Collections Manager
Dennis Pratt	Fleet Operations Superintendent
Larry Rennie	Building Maintenance Superintendent
Kevin Springer	Budget Director
Dena Stockalper	District Court Administrator
Kathy Stocker	Dispatch Manager
Peggy Vice	Purchasing Manager
William Winn	Water & Wastewater Operations Manager

# ***CITY OF FAYETTEVILLE, ARKANSAS QUARTERLY MANAGEMENT REPORT***

## **Second Quarter 2011**

### **MAYOR**

Lioneld Jordan

### **CITY COUNCIL**

Adella Gray  
Mark Kinion  
Justine Tennant  
Rhonda Adams

Ward 1, Position 1  
Ward 2, Position 1  
Ward 3, Position 1  
Ward 4, Position 1

Brenda Thiel  
Matthew Petty  
Bobby Ferrell  
Sarah Lewis

Ward 1, Position 2  
Ward 2, Position 2  
Ward 3, Position 2  
Ward 4, Position 2

### **ELECTED OFFICIALS**

Kit Williams - City Attorney  
Sondra Smith - City Clerk/Treasurer  
Rudy Moore, Jr. - District Court Judge

---

### **SENIOR DEPARTMENT DIRECTORS / EXECUTIVE STAFF**

---

Paul A. Becker - Finance Director  
Connie Edmonston - Parks & Recreation Director  
David Jurgens - Utilities Director  
Jeremy Pate - Development Services Director  
Greg Tabor - Police Chief

David Dayringer - Fire Chief  
Terry Gulley - Transportation Services Director  
Don Marr - Chief of Staff  
Lindsley Smith - Communications Director

## **2011 SECOND QUARTER -- TABLE OF CONTENTS**

I.	<b>SPECIAL EVENT STATISTICS</b> .....	1
II.	<b>FINANCE</b>	
	City Sales Tax .....	2
	City's Portion of the County Sales Tax .....	3
	Franchise Fees .....	4
	Parks Development HMR Tax .....	5
	State Turnback – General and Street Funds .....	6
	District Court Activity .....	7-8
III.	<b>BUILDING RELATED ACTIVITIES</b>	
	Building Permits .....	9
	Building Permit Fees Collected .....	10
	Code Compliance Service Requests .....	11
	Dwelling Units Approved .....	12
	Non Residential Square Footage Approved .....	13
IV.	<b>ENTERPRISE ACTIVITIES</b>	
	Airport.....	14-15
	Water & Sewer .....	16-21
	Solid Waste & Recycling .....	22-25
V.	<b>TRANSPORTATION &amp; RECREATION</b>	
	Street Operations .....	26-27
	Trails .....	28
	Transportation Bond Program .....	29
	Parks & Recreation .....	30-31
	Library .....	32-33
VI.	<b>PUBLIC SAFETY</b>	
	Police .....	34-37
	Fire .....	38-39
	Animal Services .....	40
VII.	<b>INTERNAL ACTIVITIES</b>	
	Human Resources .....	41-42
VIII.	<b>BUDGET ADMENDMENTS</b>	
	Summary by Funding Source .....	43
	Detail by Fund.....	44-47

Special Events which affect the City:

During the second quarter of 2011, sales taxes continued to increase over projections. Year-to-date gains for the General Fund combined sales taxes were approximately \$538,050. Based on the 2010 census Fayetteville receives a smaller portion of the County sales tax distributions because of Springdale's dramatic population growth.

Building permits are also doing somewhat better than budget projections primarily because of permitting related to new construction activity at the Fayetteville high school.

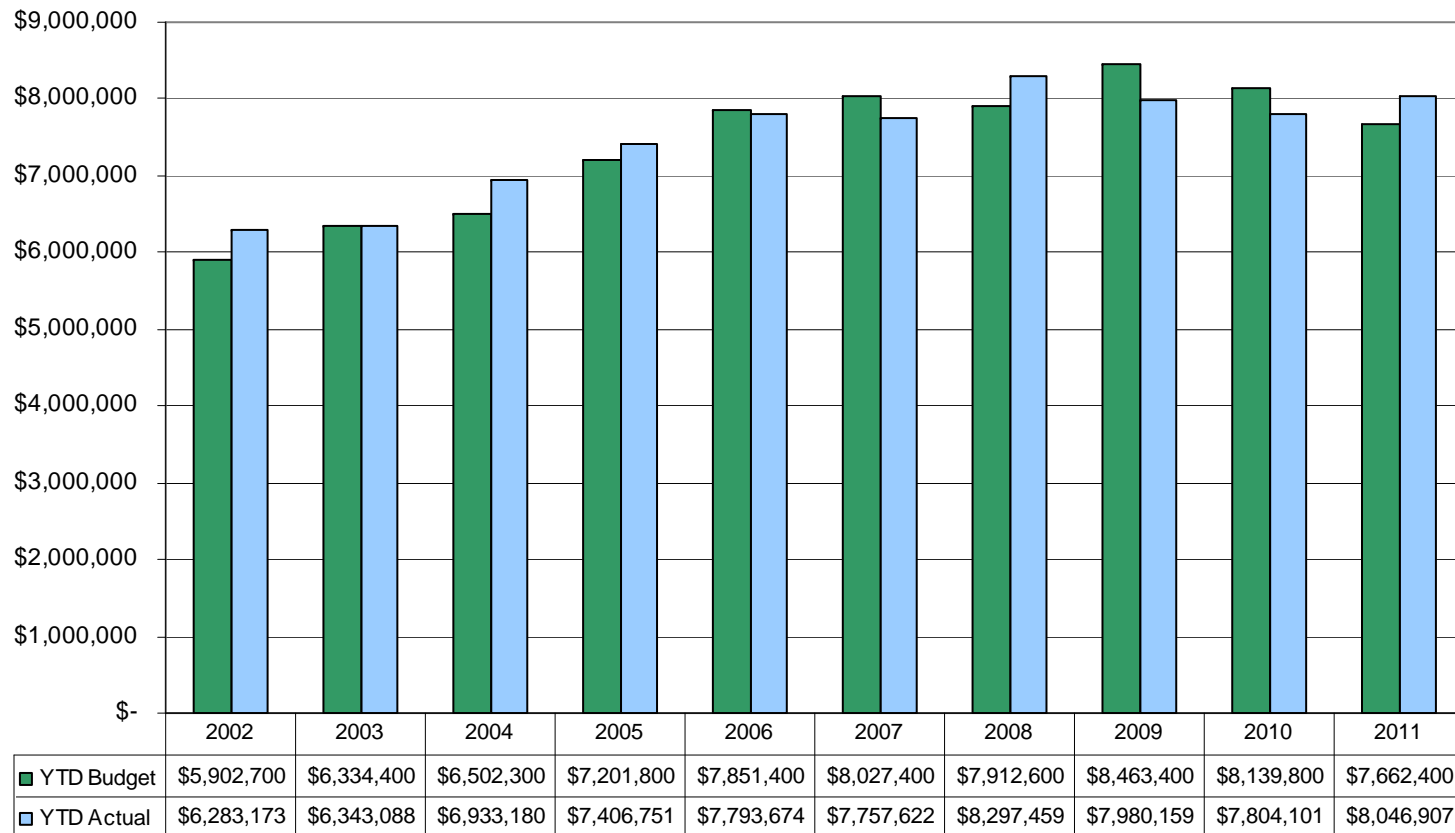
For project updates:

Transportation Bond Issue:

[http://www.accessfayetteville.org/government/projects/Transportation\\_Improvement\\_Bond\\_Program/index.cfm](http://www.accessfayetteville.org/government/projects/Transportation_Improvement_Bond_Program/index.cfm)

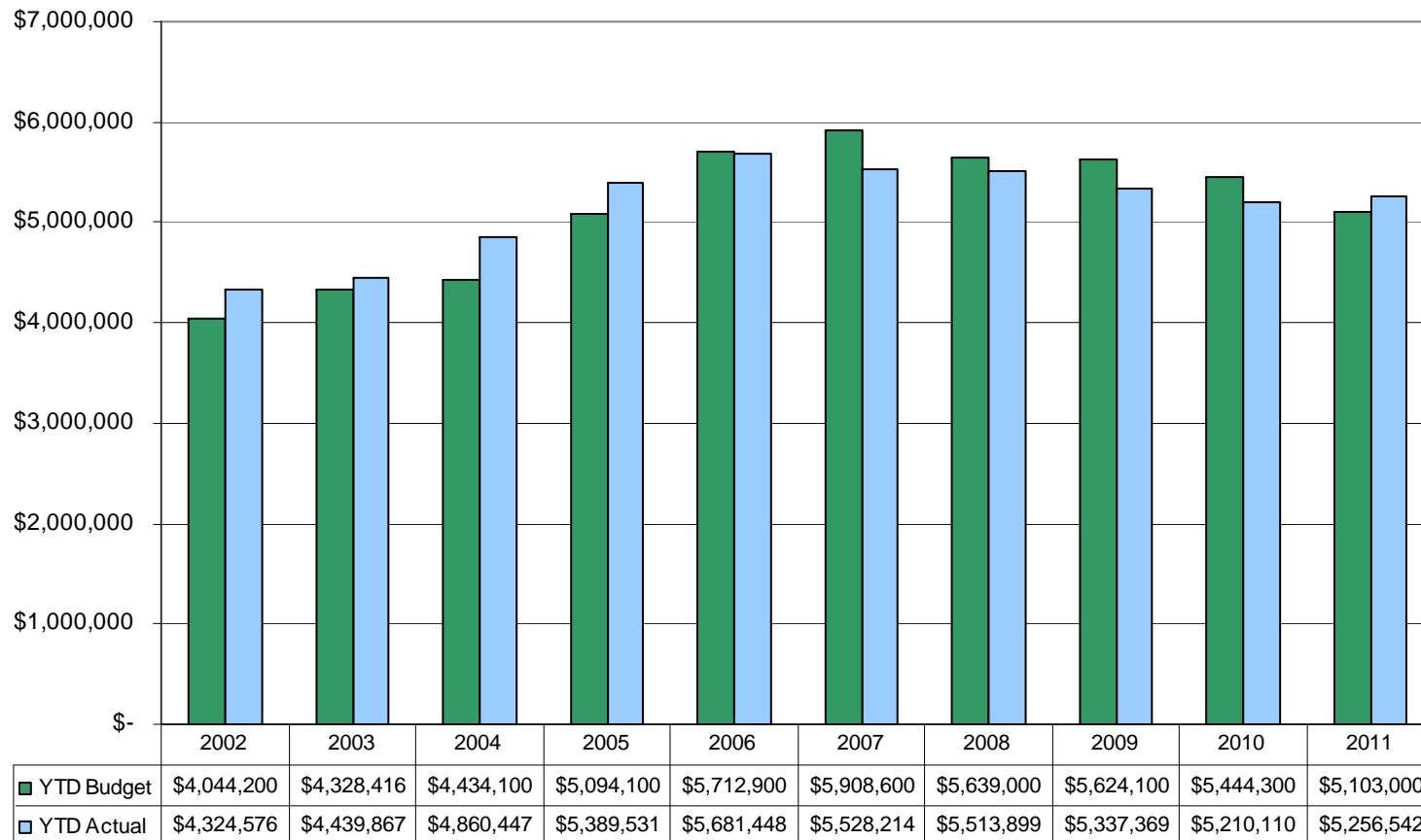
Comment: Year to date City sales tax collections at the end of the second quarter were up 3.11% compared to last year. This is a 5.00% increase over budget or \$384,507.

### City Sales Tax Adopted Budgeted Revenues Compared to Actual Collections Year-to-Date



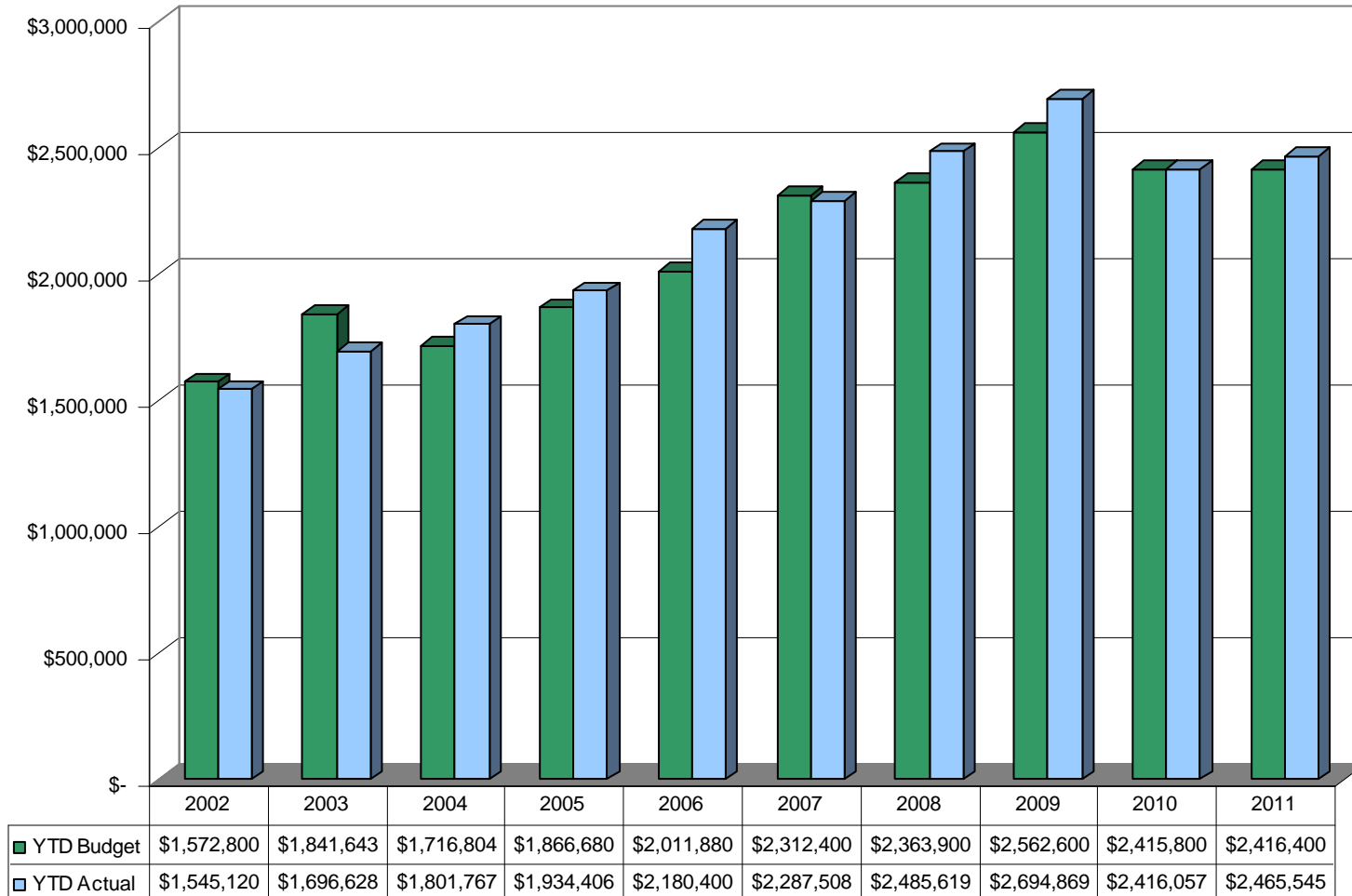
Comment: Year to date, the City's portion of county sales tax was up 3.00% compared to budget but up only 0.30% compared to last year. This is due primarily to the change in distribution of County Sales Taxes caused by the 2010 census.

### City's Portion of the County Sales Tax Adopted Budgeted Revenues Compared to Actual Collections Year-to-Date



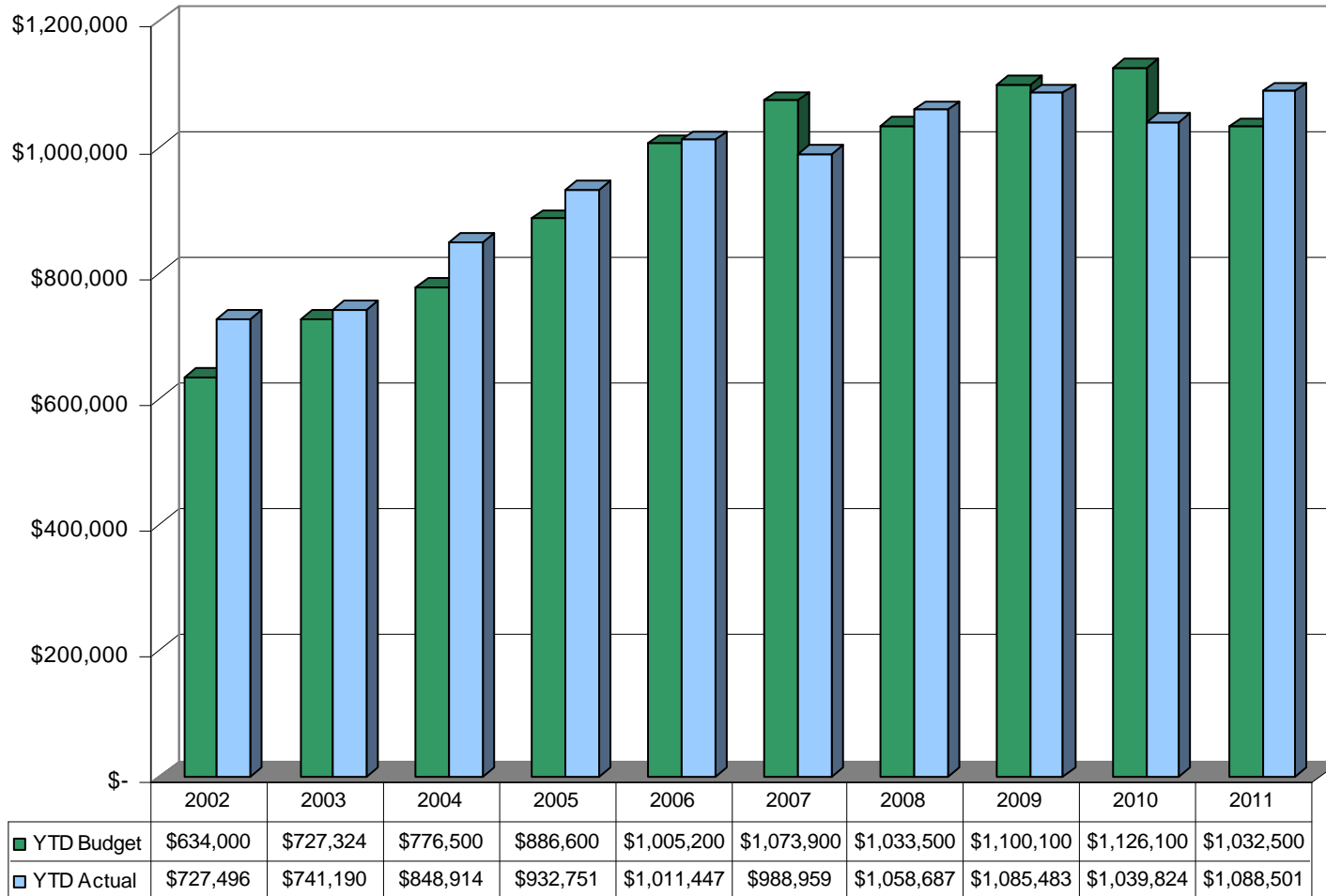
Comment: Franchise fee receipts are slightly ahead of budget and prior year so far.

## Franchise Fees



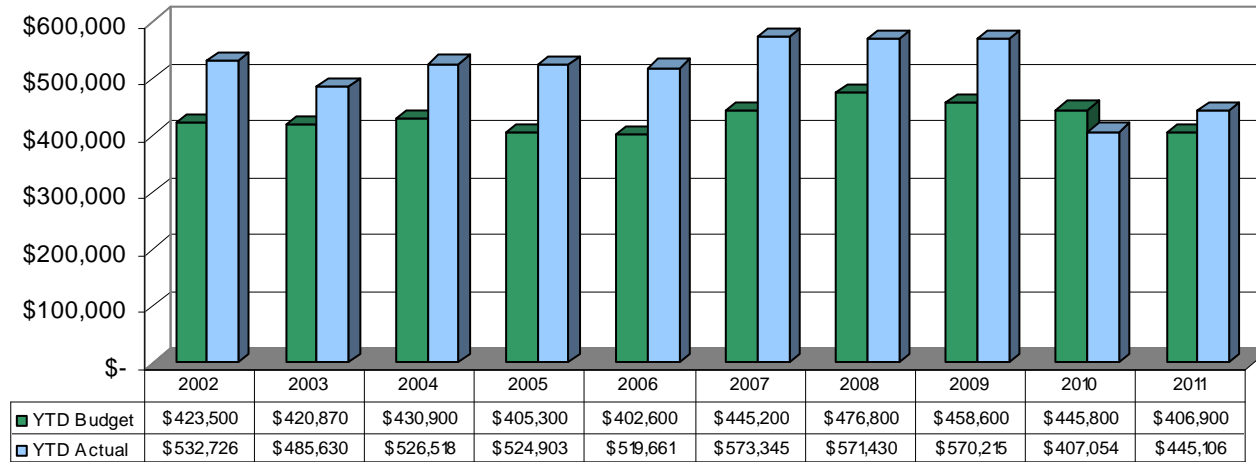
Comment: HMR taxes were 4.68% over last year during the second quarter. This was 5.40% over budget.

### Parks Development HMR Tax

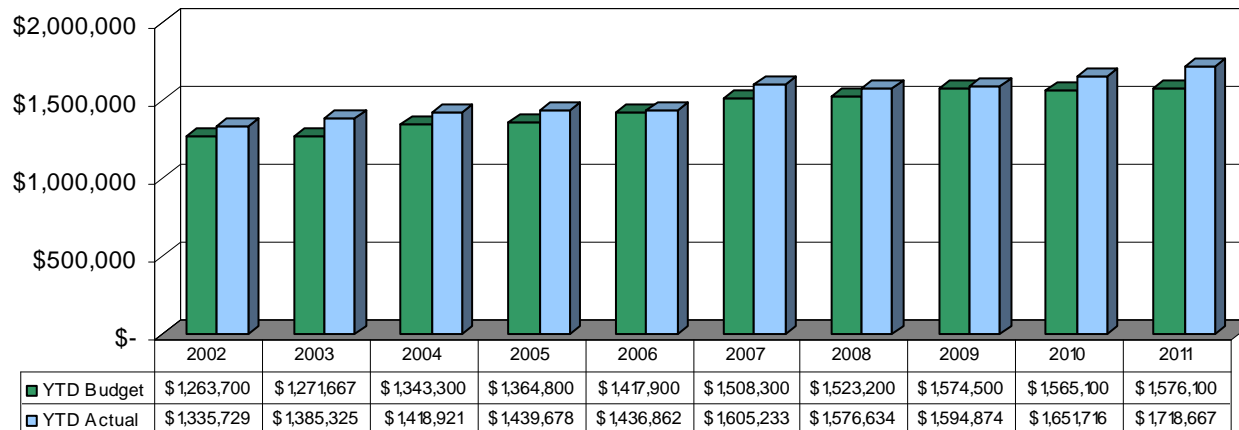


Comment: During the second quarter, State Turnback was 9.3% over budget for General Fund and 9.0% for Street Turnback. Turnback receipts also exceeded prior years in both cases.

### State Turnback - General Fund



### State Turnback - Street Fund



Comment:

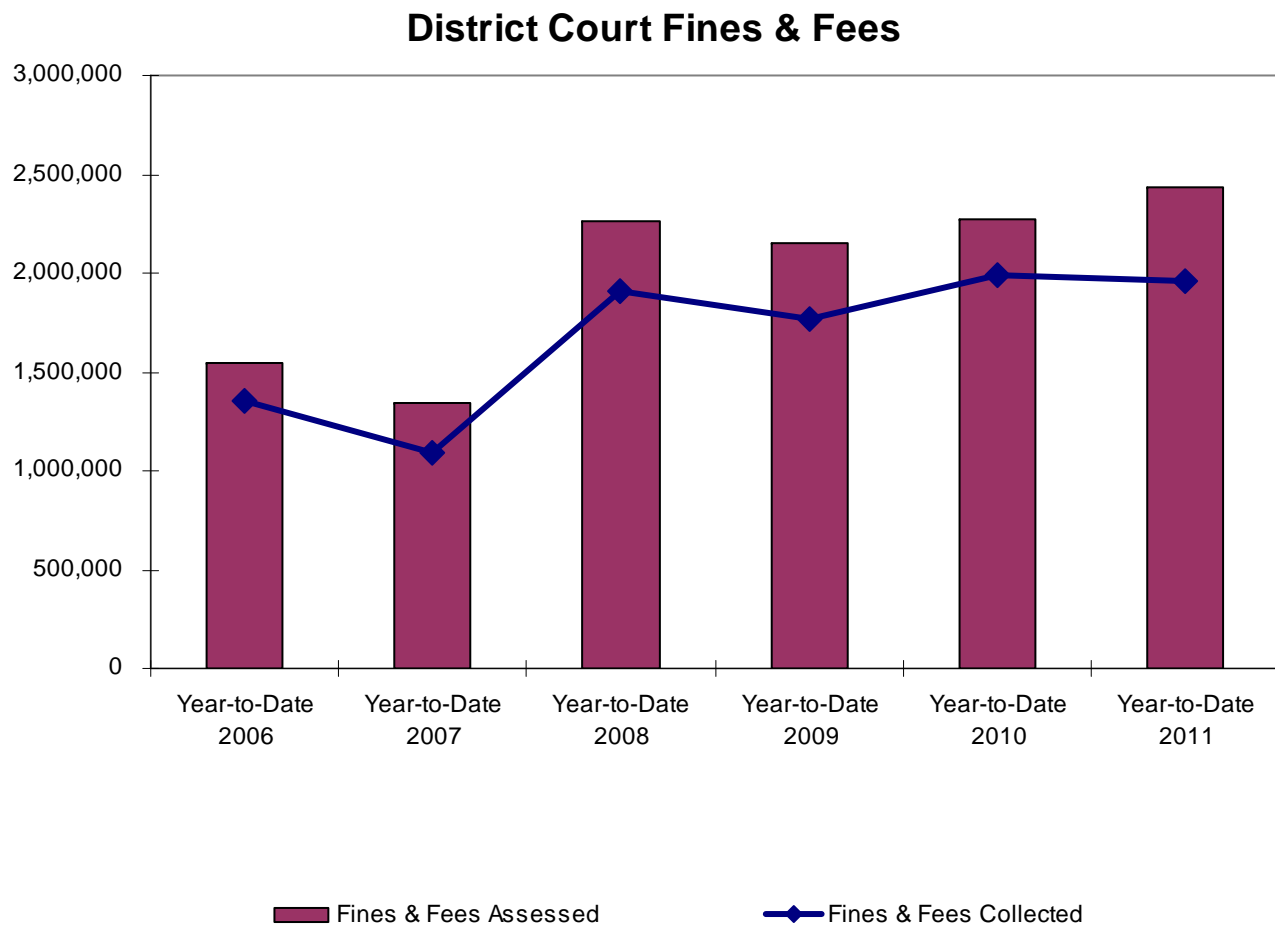
## District Court Cases

	2006	2007	2008	2009	2010	2011
	Year-to-Date	Year-to-Date	Year-to-Date	Year-to-Date	Year-to-Date	Year-to-Date
<b>Criminal</b>						
Cases Filed	12,487	13,183	16,163	17,430	14,532	12,549
Cases Adjudicated	9,105	11,143	17,067	18,554	17,825	16,646
<b>Probation</b>						
Interviews Conducted	399	391	278	562	776	871
Persons / Hours of Public Service Assigned	69 / 2,143	47 / 1,926	44 / 1,366	59 / 3,058	79 / 4,769	154 / 4,124
<b>Small Claims</b>						
Cases Filed	897	877	1,008	1,555	1,778	1,710

## District Court Fines & Fees

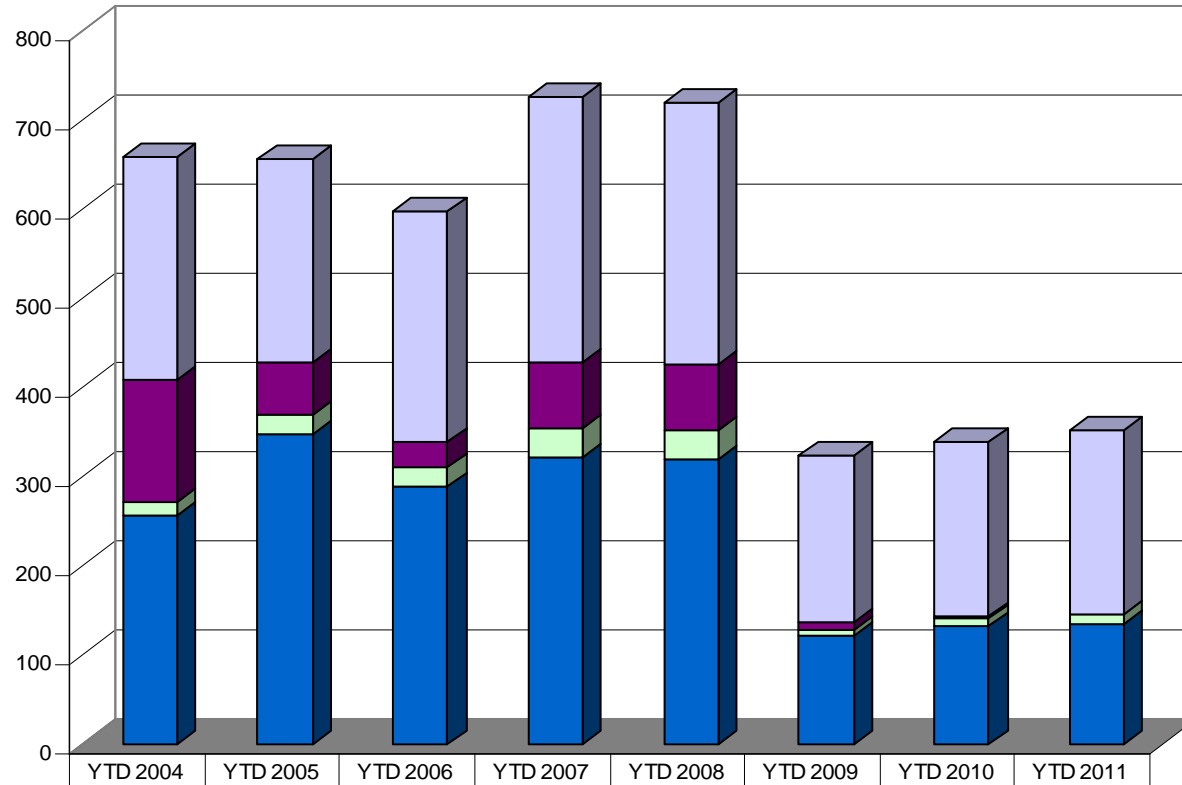
	2006	2007	2008	2009	2010	2011
	Year-to-Date	Year-to-Date	Year-to-Date	Year-to-Date	Year-to-Date	Year-to-Date
Fines & Fees Assessed	1,547,985	1,339,238	2,258,667	2,152,521	2,269,119	2,431,244
Fines & Fees Collected	1,355,723	1,091,914	1,912,116	1,771,665	1,994,103	1,963,481
Fines & Fees Uncollected	192,262	247,324	346,551	380,856	275,016	467,763
% of Fees Collected	88%	82%	85%	82%	88%	81%

Comment:



Comment: Building permits issued continue to increase slightly over the previous two years.

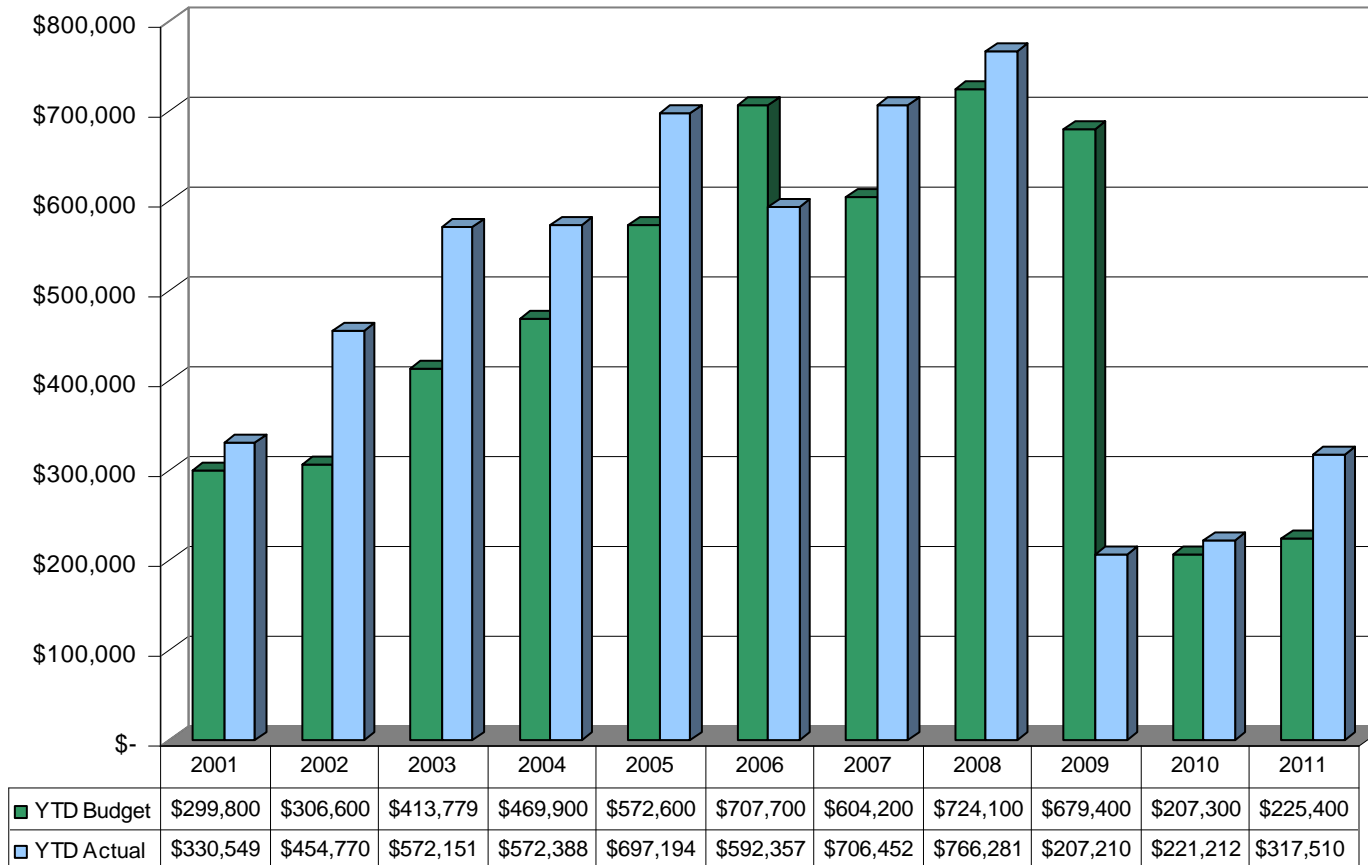
### Total Building Permits Issued Year to Date



	YTD 2004	YTD 2005	YTD 2006	YTD 2007	YTD 2008	YTD 2009	YTD 2010	YTD 2011
Additions/Alterations/Misc.	250	228	258	298	293	185	195	206
New Multi-Family	136	58	28	73	73	9	2	1
New Commercial	15	22	22	34	34	7	9	10
New Single-Family Detached	256	347	288	320	318	121	132	134

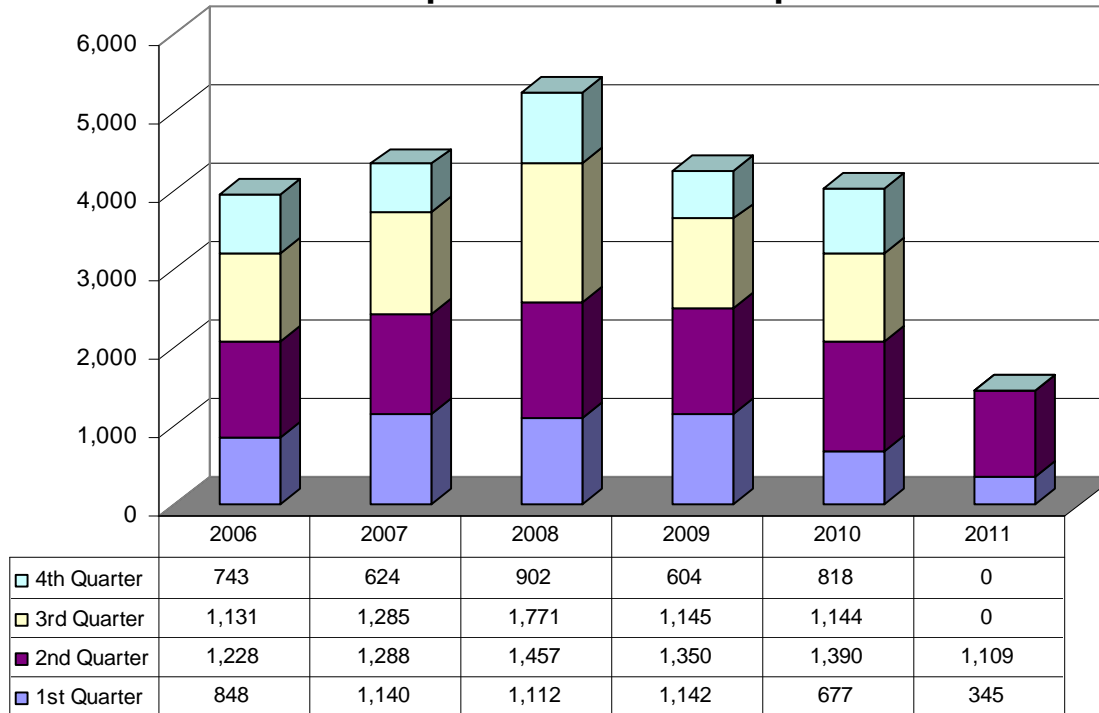
Comment: Revenue collections are well above budgeted projections through the second quarter.

### Building Permit Fees Collected Year-to-Date



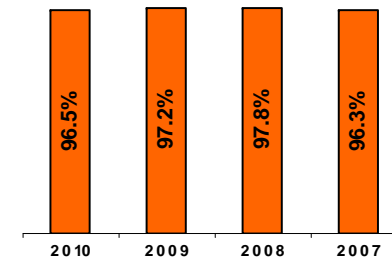
Comment: The top graph shows the amount of requests for service the Code Compliance Program works annually by quarter.  
The bottom graph reflects the violation abatement success rate for the past four years.

### Code Compliance Service Requests



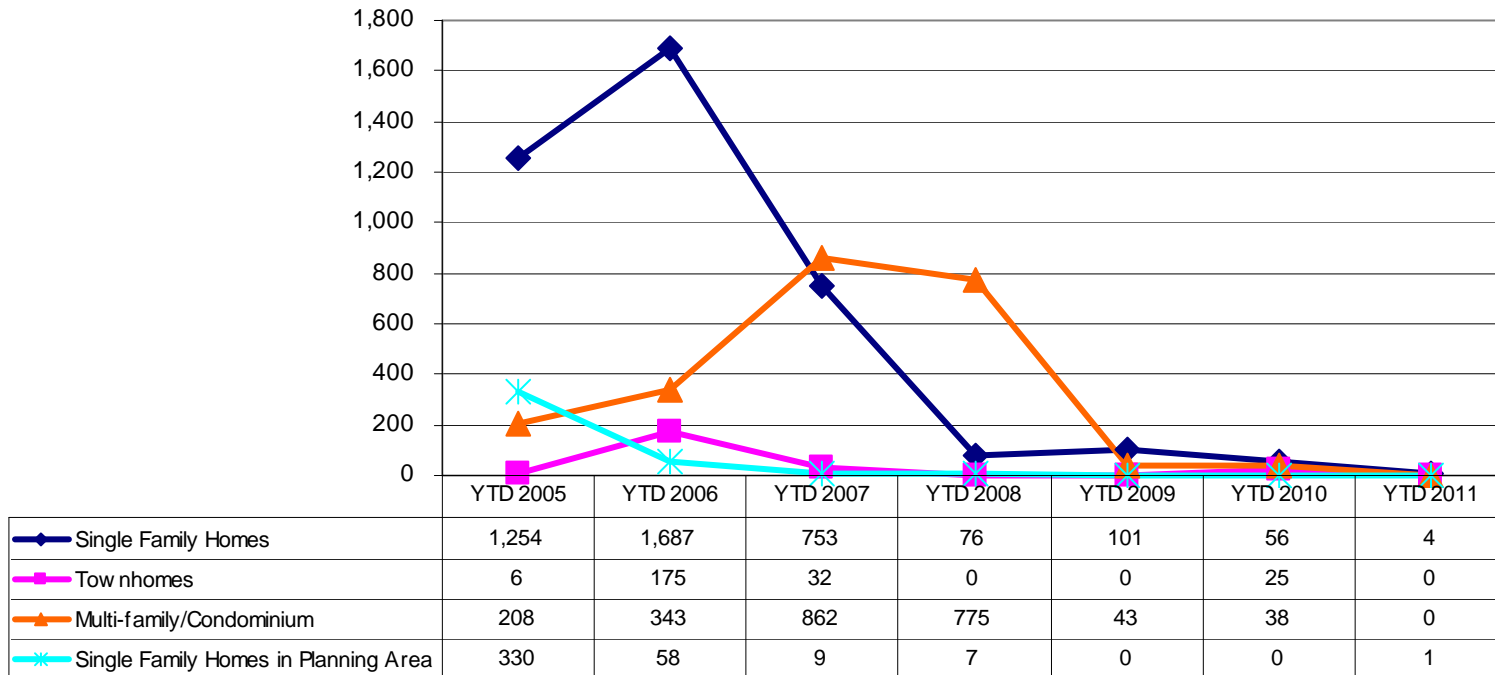
### Success Rates for Code Compliance

	Total Service Requests	Violations Found	Violations Abated	Success Rate
<b>2010</b>	4,029	3,806	3,671	<b>96.5%</b>
<b>2009</b>	4,241	4,124	4,009	<b>97.2%</b>
<b>2008</b>	5,242	5,051	4,938	<b>97.8%</b>
<b>2007</b>	4,337	4,174	4,019	<b>96.3%</b>



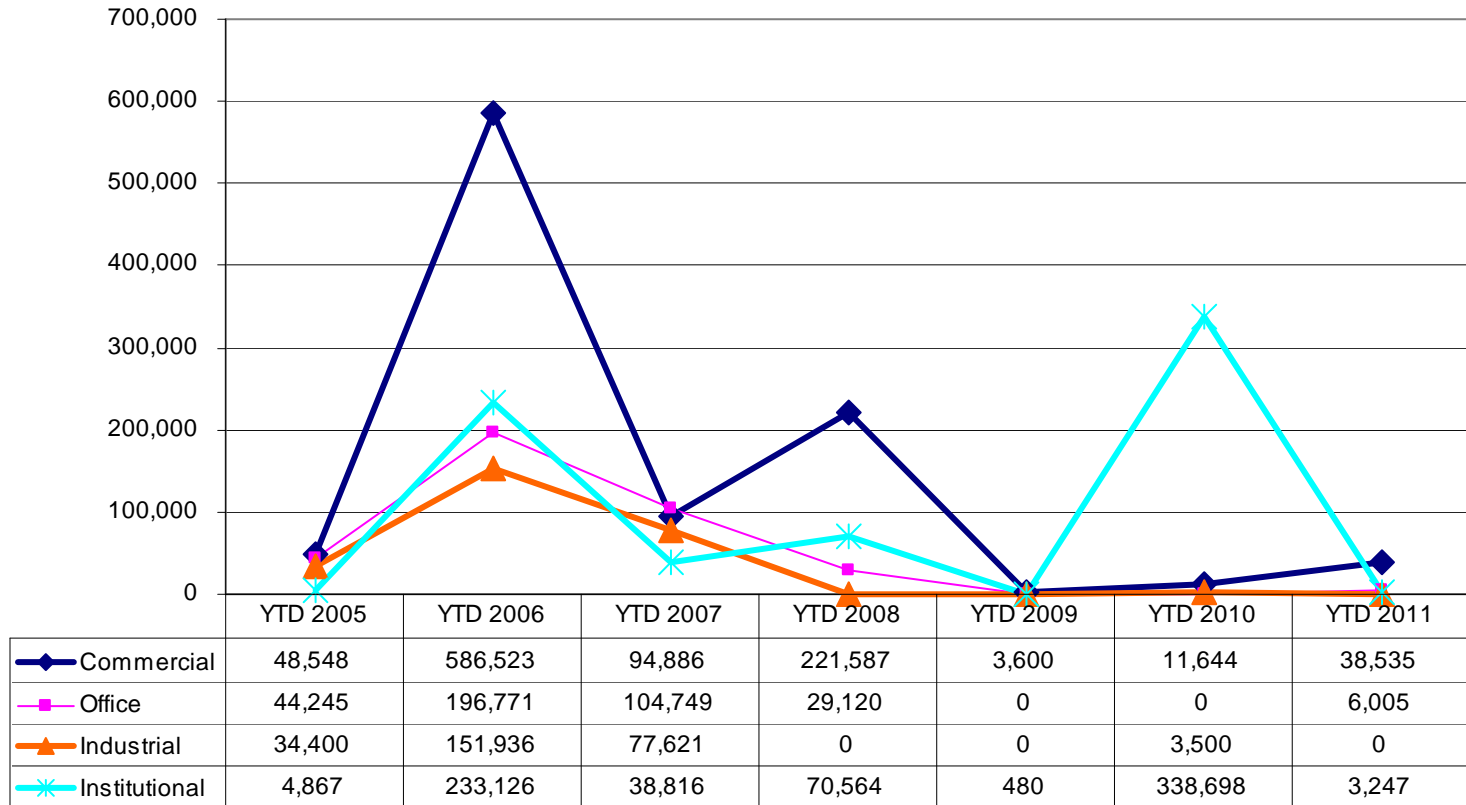
Comment: The number of new dwelling units being approved has leveled off during the past three years while existing inventory is being absorbed.

### Dwelling Units by Type Approved by the Planning Commission or Development Services



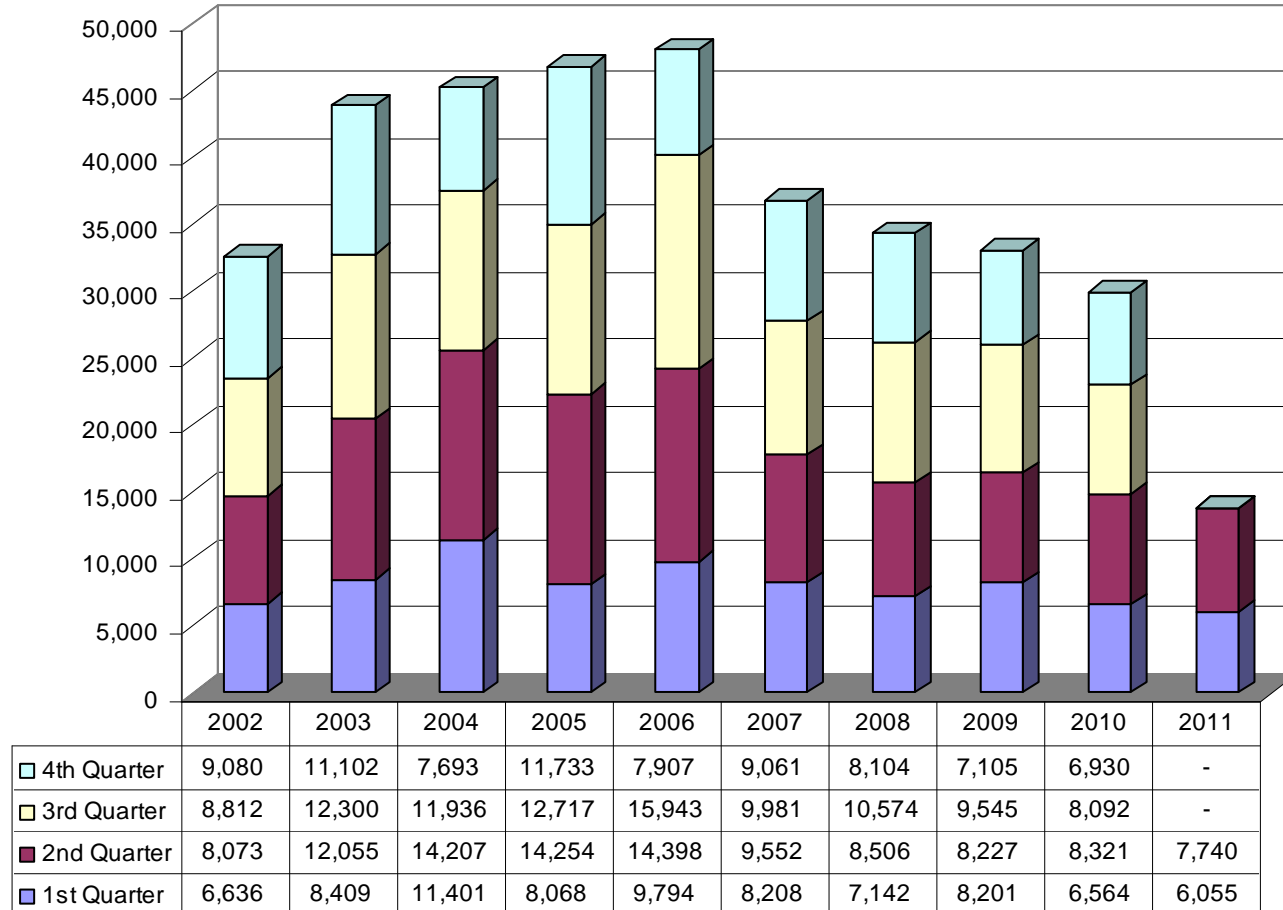
Comment: The amount of new non-residential space continues to be low, while existing office and commercial space is absorbed.

### Non Residential Square Footage by Type Approved by the Planning Commission or Development Services



Comment: The FAA forecasts that General Aviation Operations in the U.S. will likely see very modest growth of 1% annually from 2011 to 2030. Industry predictions indicate optimism for a rebound to begin in 2012.

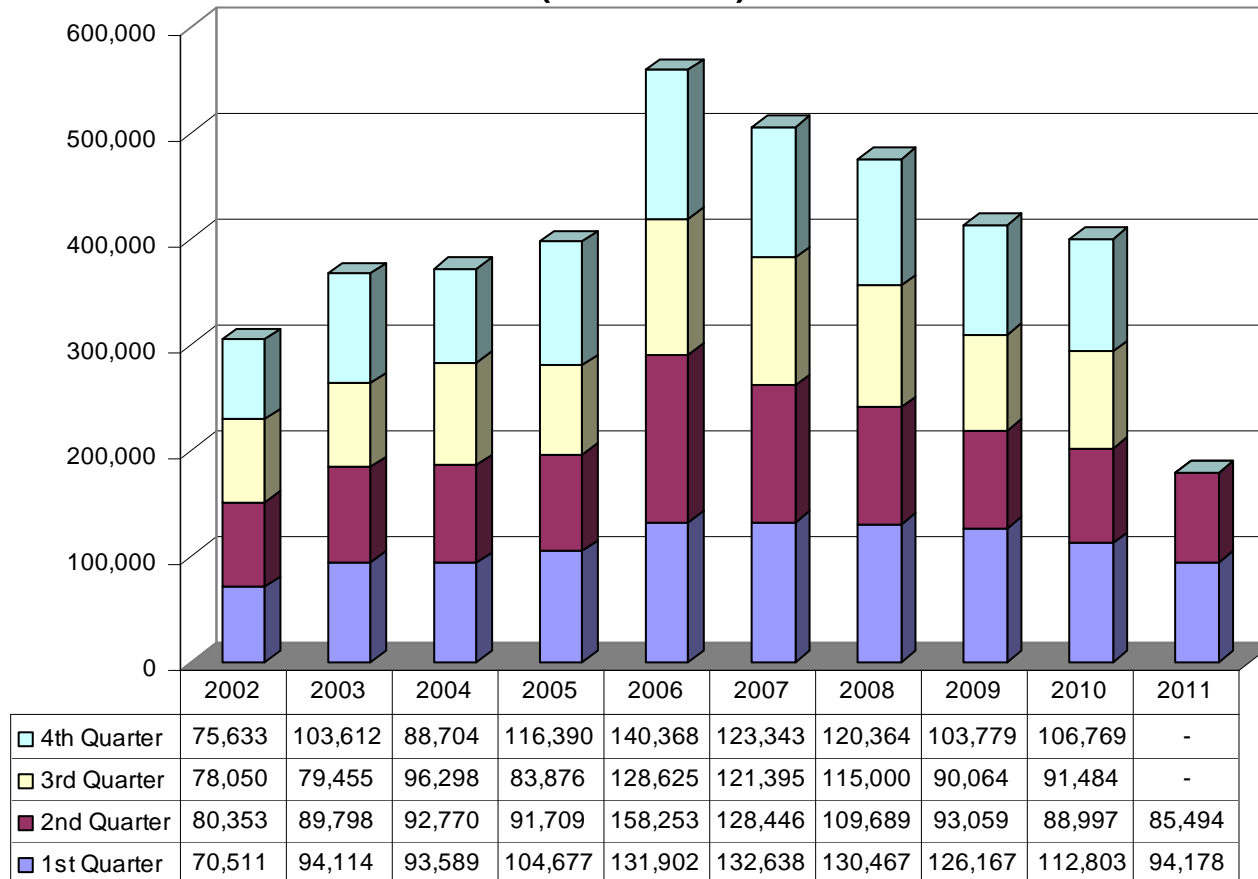
### Airport Operations\* (Number of Occurrences)



\*A takeoff, landing, or control tower contact passing through Fayetteville airspace during tower operating hours.

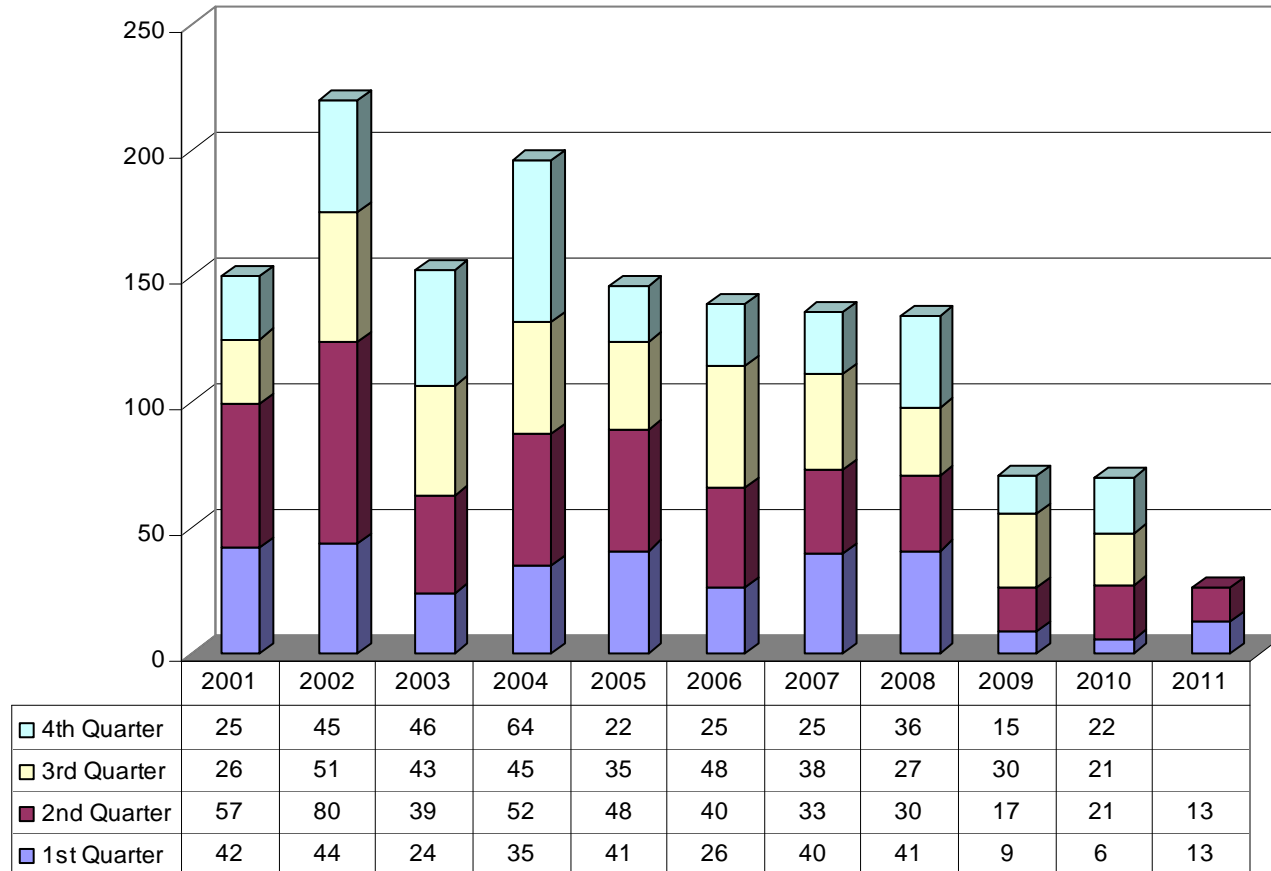
Comment: Aircraft fuel sales decline since 2006 is consistent with other U.S. aviation business activity due to U.S economic conditions. Rising fuel costs in the first half of 2011 is hampering recovery in General Aviation business.

### Airport Fuel Sales (In Gallons)



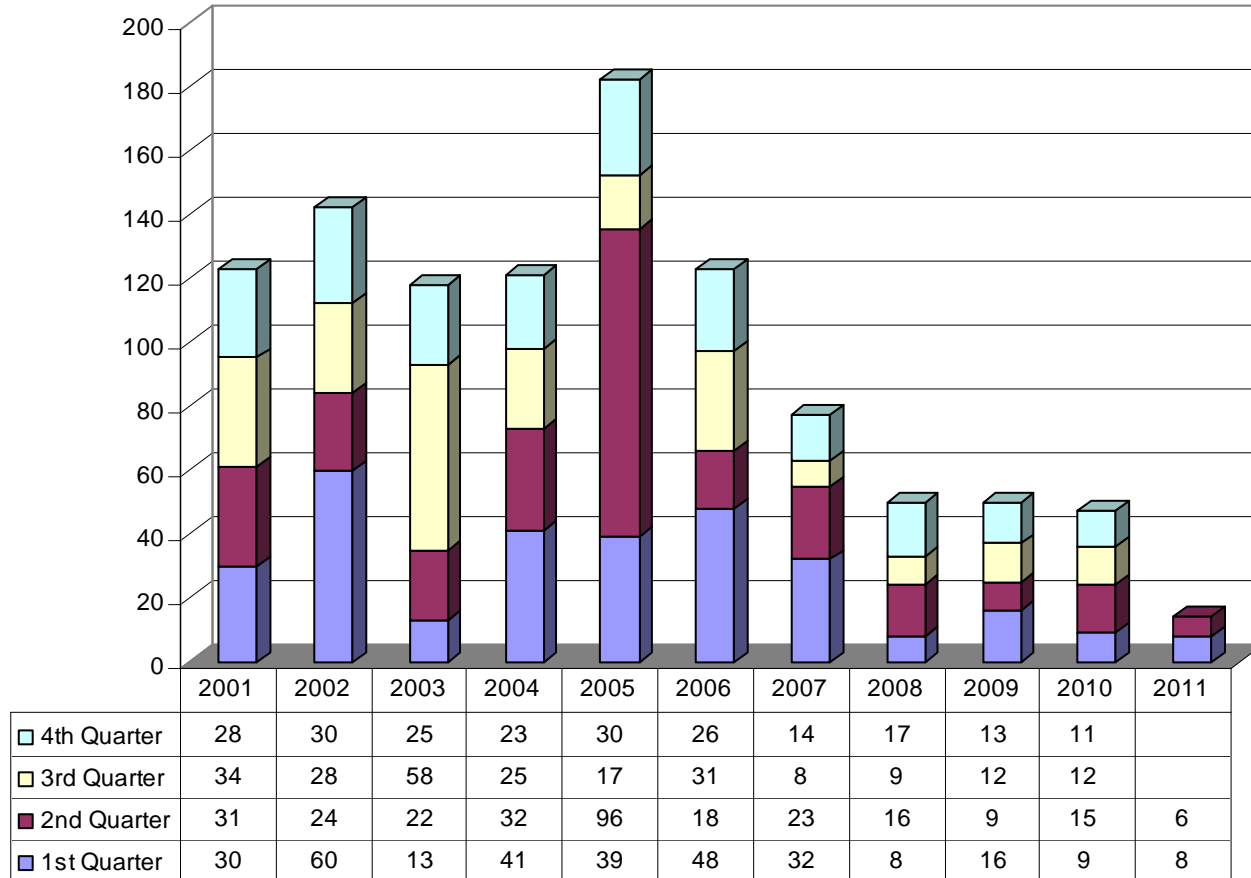
Comment: The second quarter is meeting anticipated numbers based on first quarter 2011 and the past two years.

### Number of New Water Connections Made



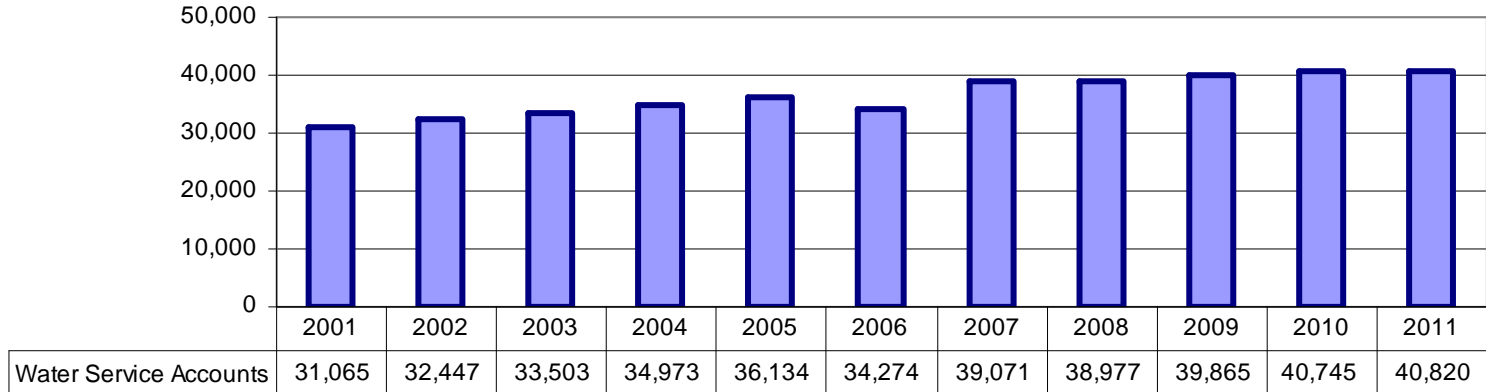
Comment: The second quarter is lower than previous years, but is showing anticipated numbers based on first quarter 2011 and the past three years.

### Number of New Sewer Connections Made

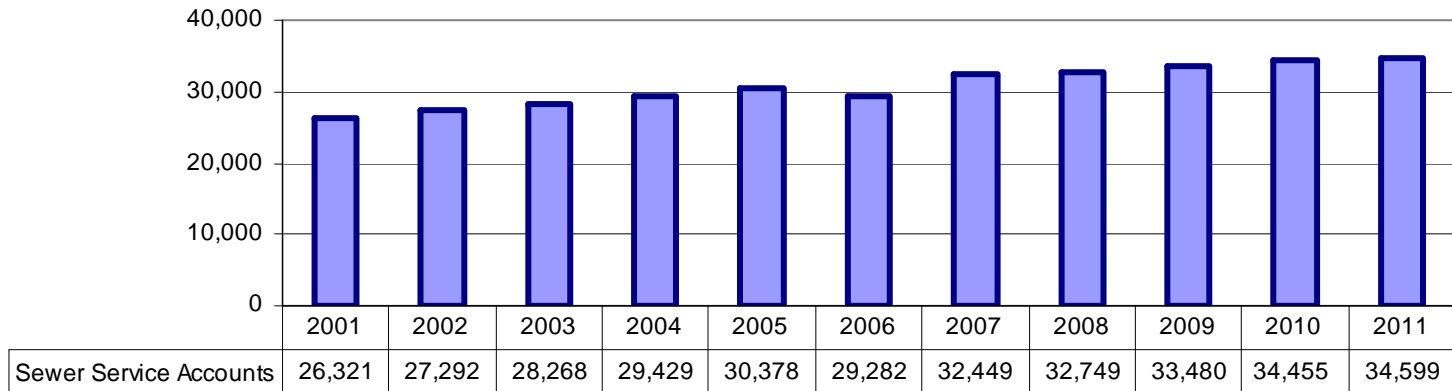


Comment: Service Accounts in 2011 have increased as anticipated and show growth in line with recent years.

### Number of Water Service Accounts

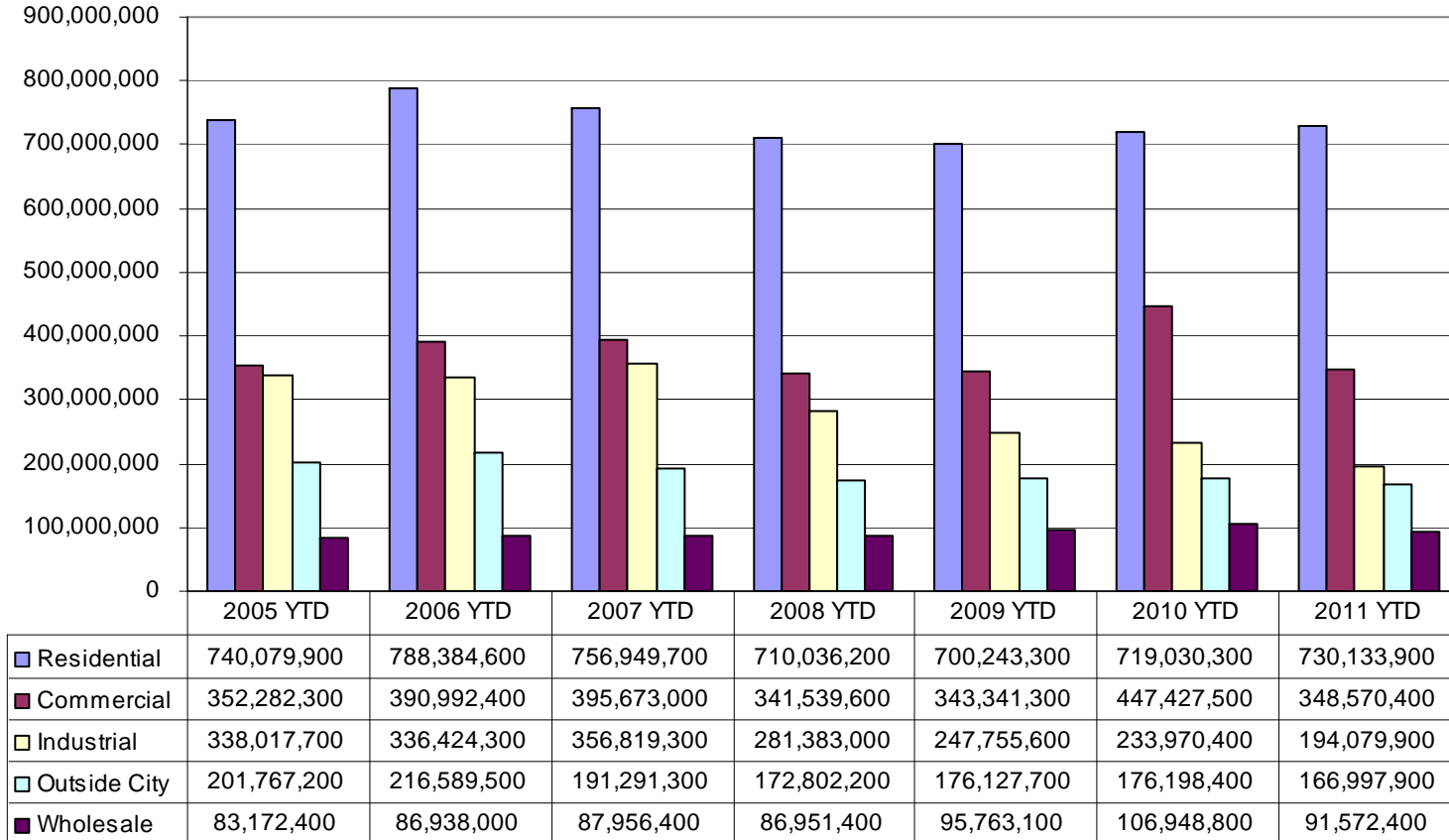


### Number of Sewer Service Accounts



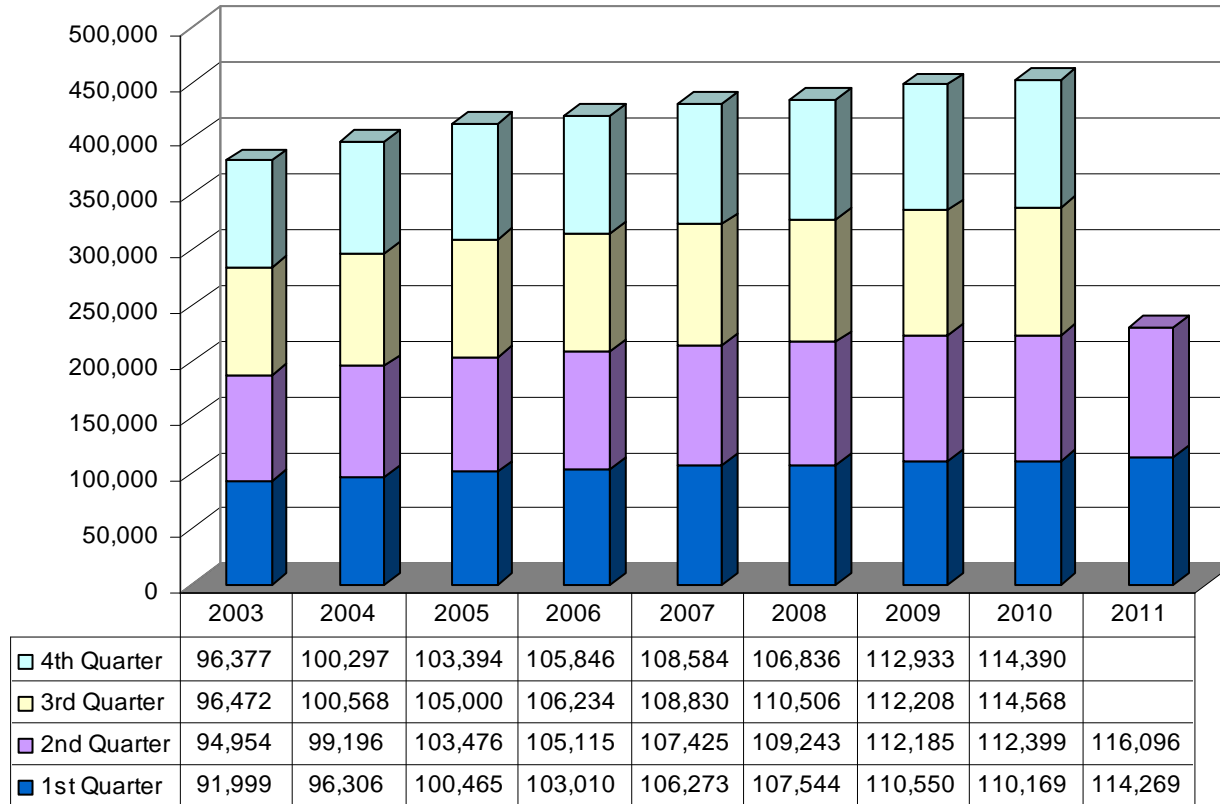
Comment: Consumption has slightly decreased due to the increase in vacant property.

### Water Consumption by Customer Type (In Gallons)



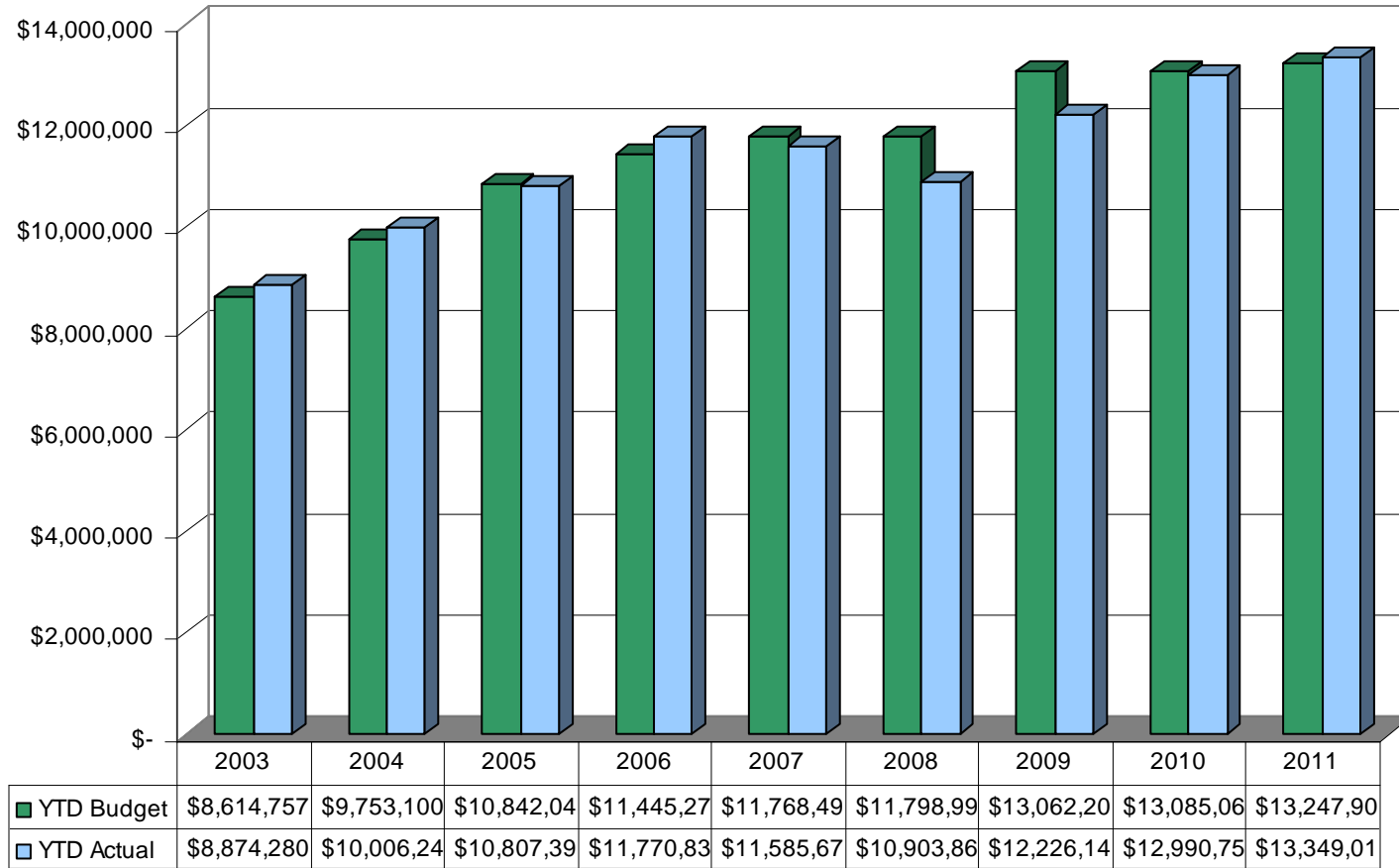
Comment: The second quarter of 2011 as compared to the second quarter of 2010 indicates stagnate growth.

### Number of Water & Sewer Utility Bills Processed



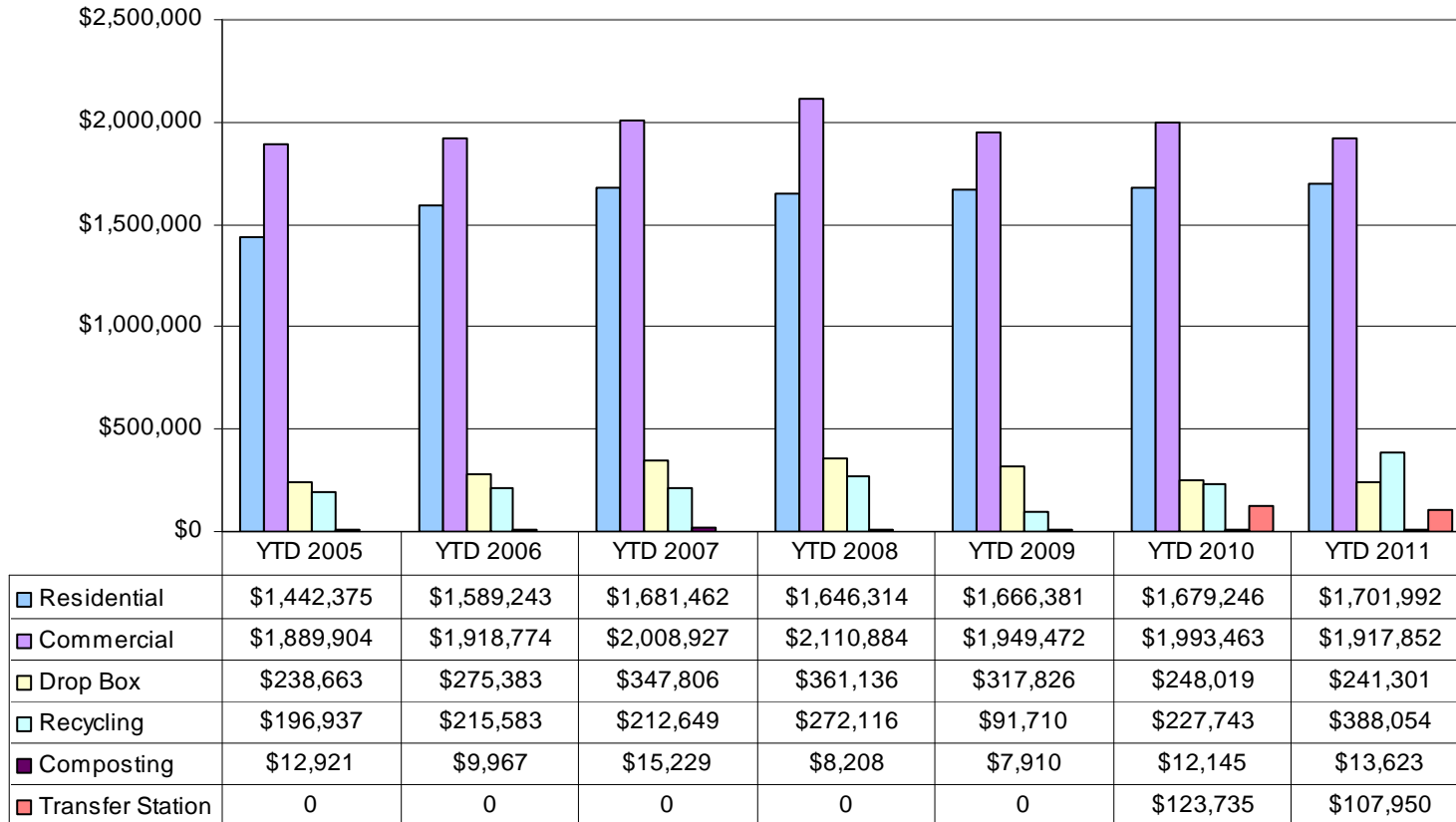
Comment: Revenue increases are a result of January 1, 2011 rate increases even though consumption has declined.

### Water & Sewer Billed Revenue Collected Budget Compared to Actuals



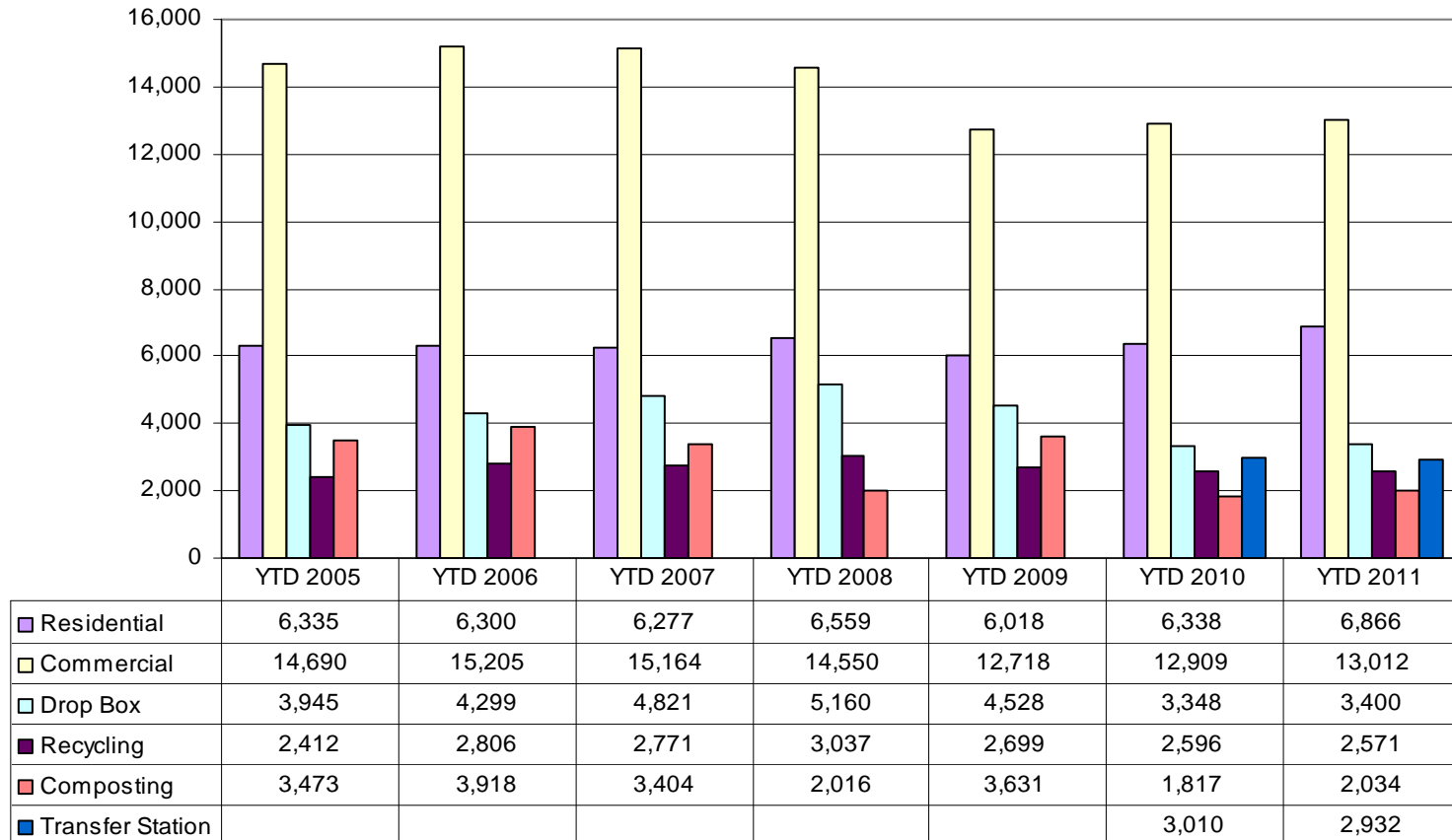
Comment: The City took over operation of the Transfer Station program in late October 2009. Recycling revenues experiencing good commodity pricing through the first two quarters of 2011.

### Solid Waste Program Revenues (In Dollars)



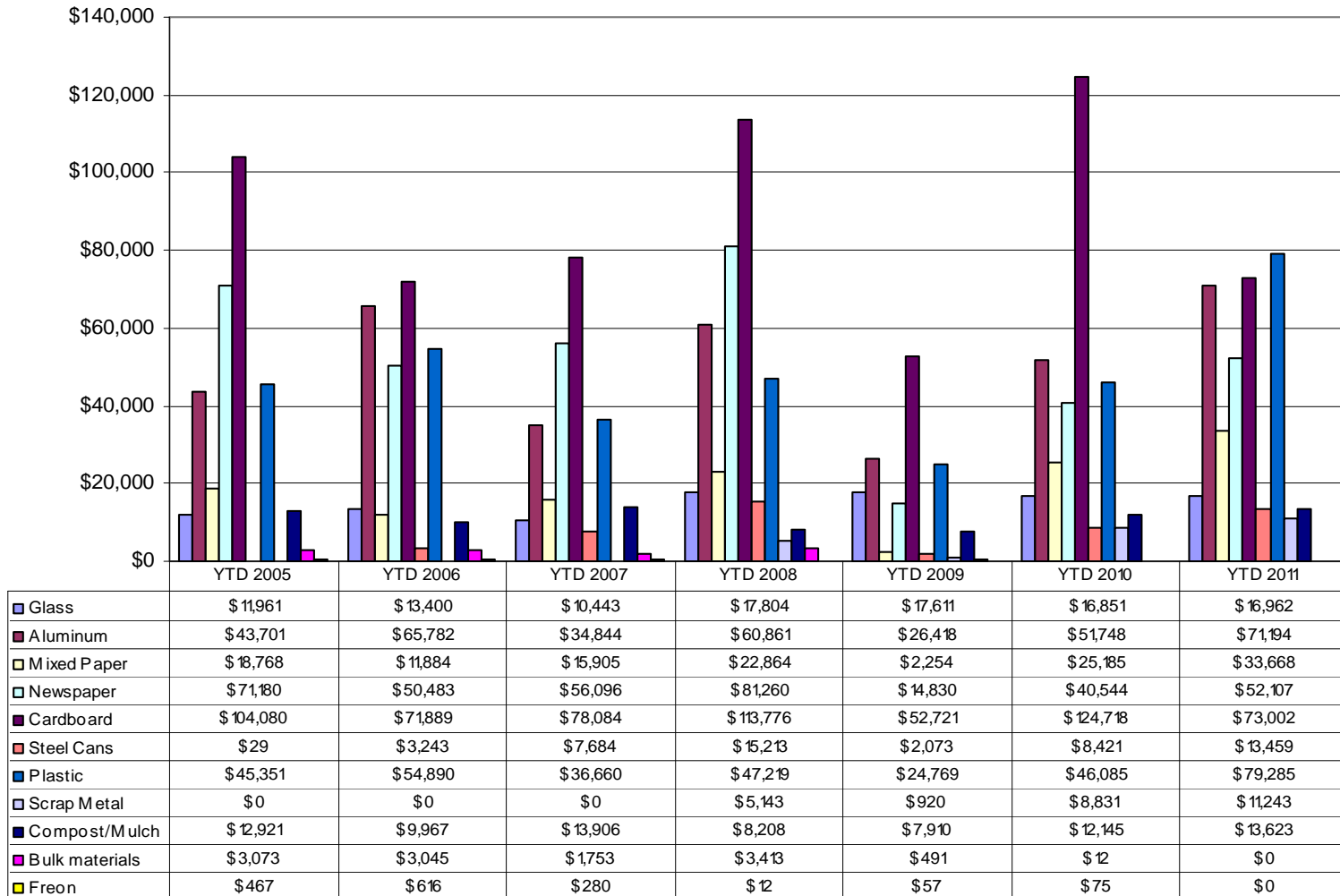
Comment: Recycling tonnage is reflective of recycling tons sold during the first and second quarter. Waste volumes are rising slightly due to improving economy.

### Solid Waste Tonnage Collected by Program



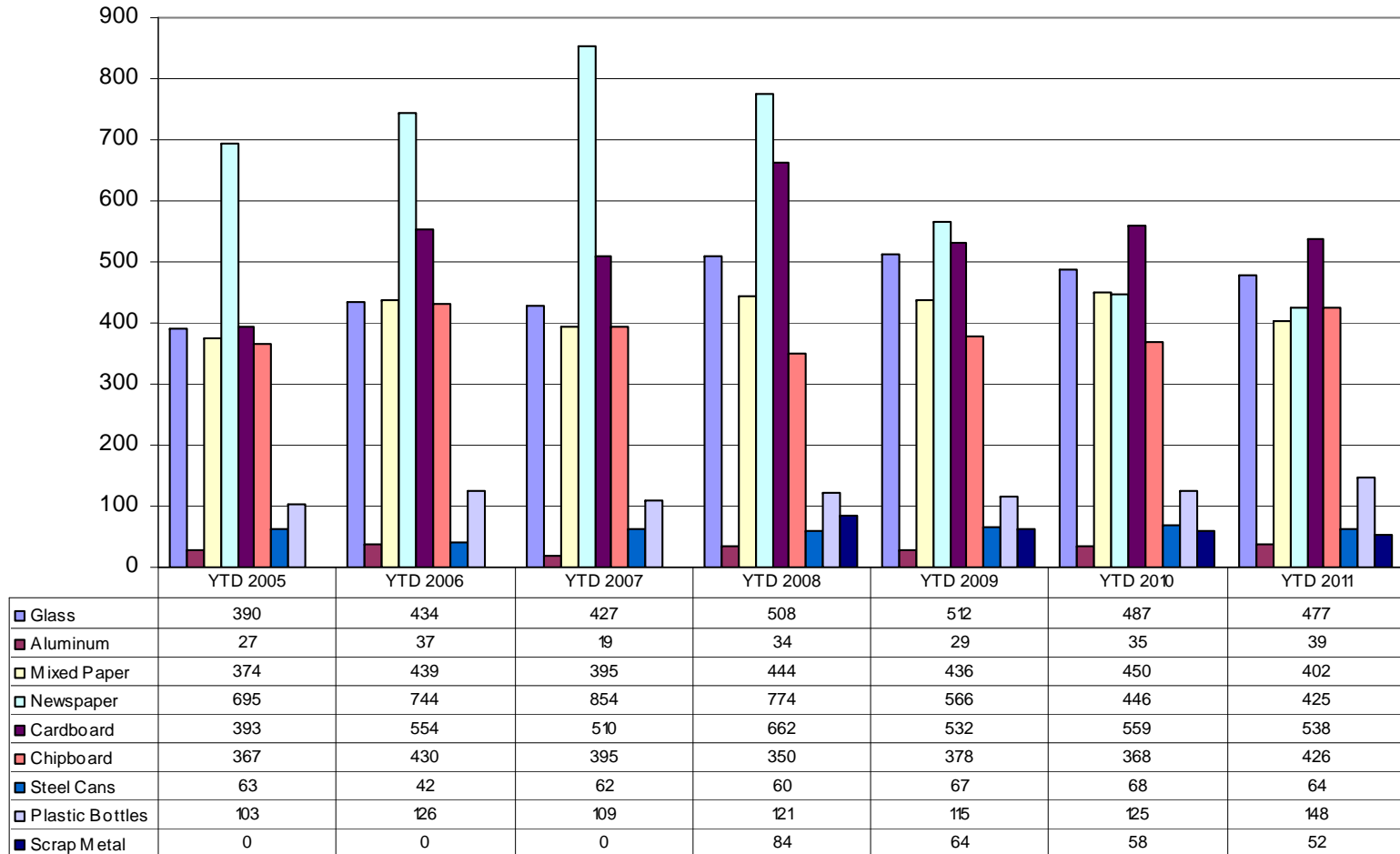
Comment: Commodity markets continued to perform very well. Cardboard prices have remained steady and has good demand. Both types of plastics recycled continue to have a very high value compared to normal price ranges. Commodity prices for materials are volatile and change monthly, sometimes weekly.

### Solid Waste Recycling Revenue by Product (In Dollars)



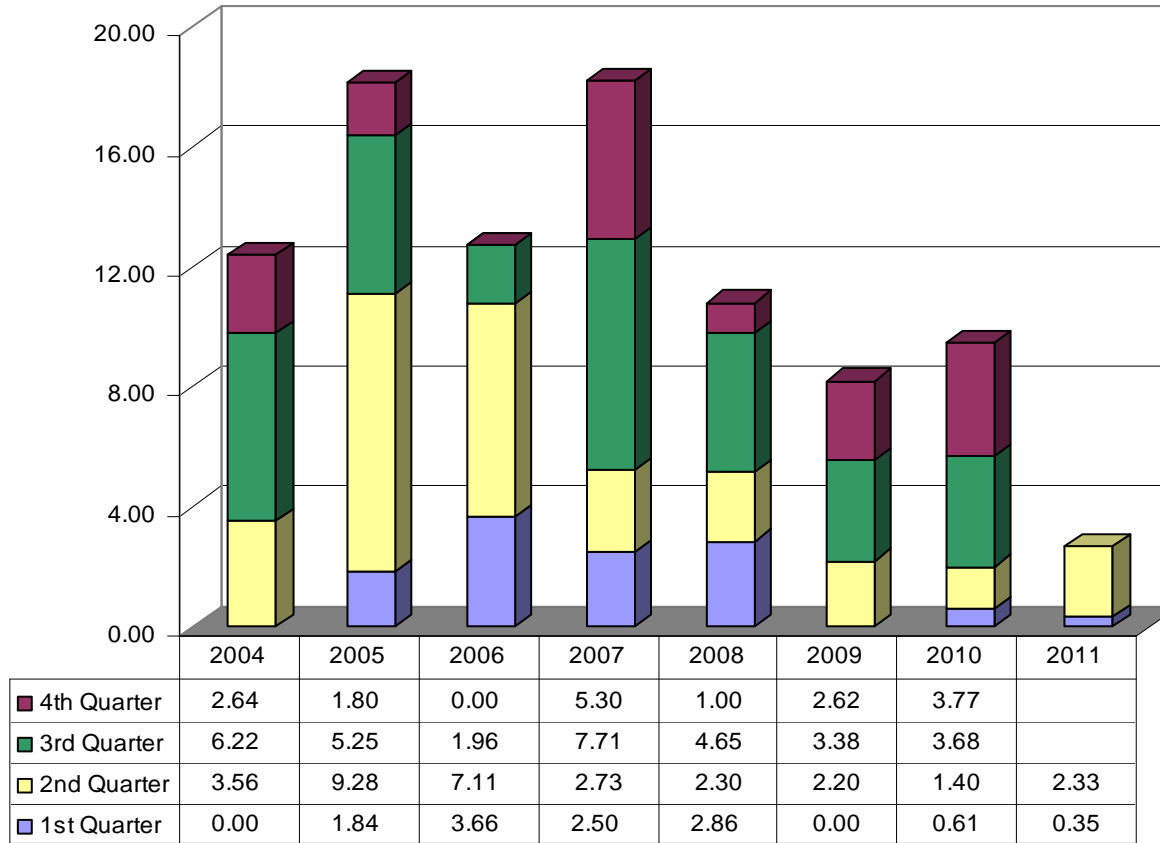
Comment: Newspaper volumes continue to be down as technology changes reading habits. Chipboard levels are up in volume collected.

### Solid Waste Recycling Tonnage Sold by Product



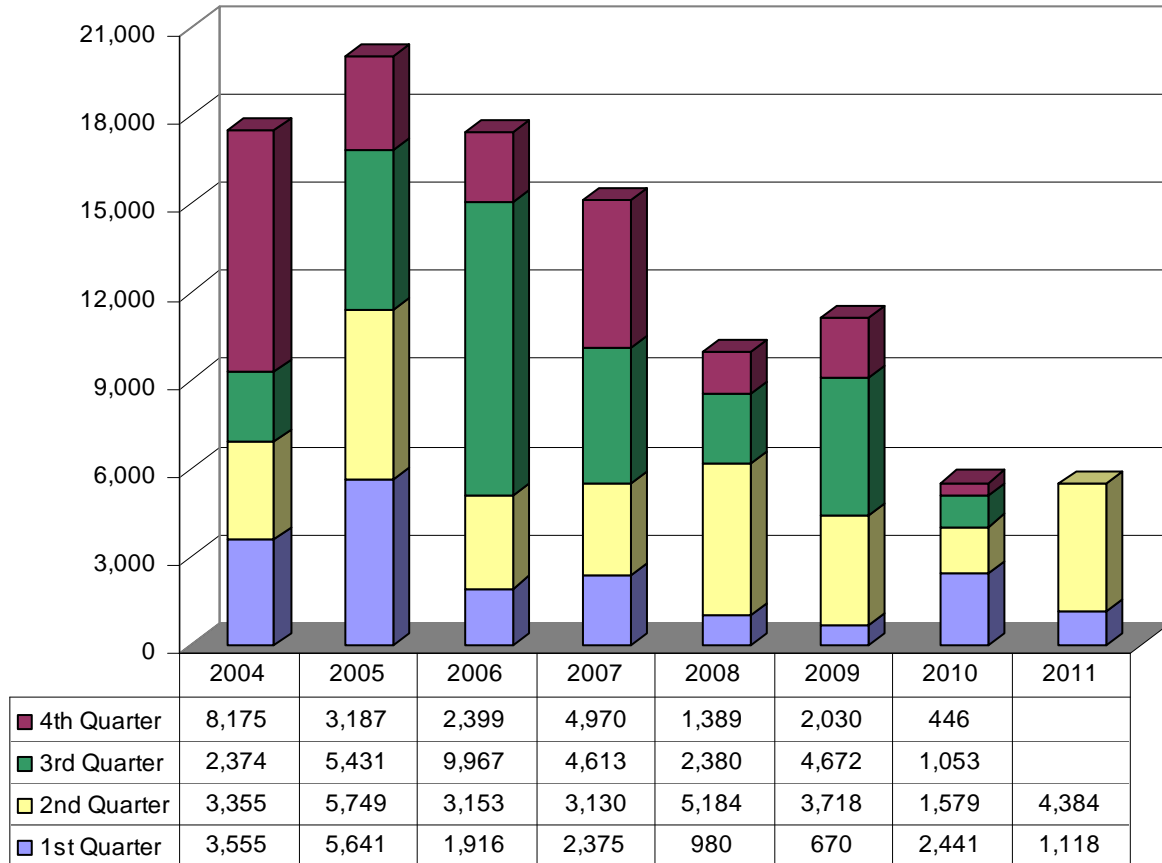
Comment: Overlays and spot repairs included: Mt. Comfort Road (Lewis Avenue to Stephens Avenue), One Mile Road, 13th Street, Lester Street, Velda Court, Sandra Street, East Joyce Boulevard, East Avenue, School Avenue (Center Street to Spring Street), Calvin Street, and Haddon Avenue.

### Asphalt Overlay - Miles Completed



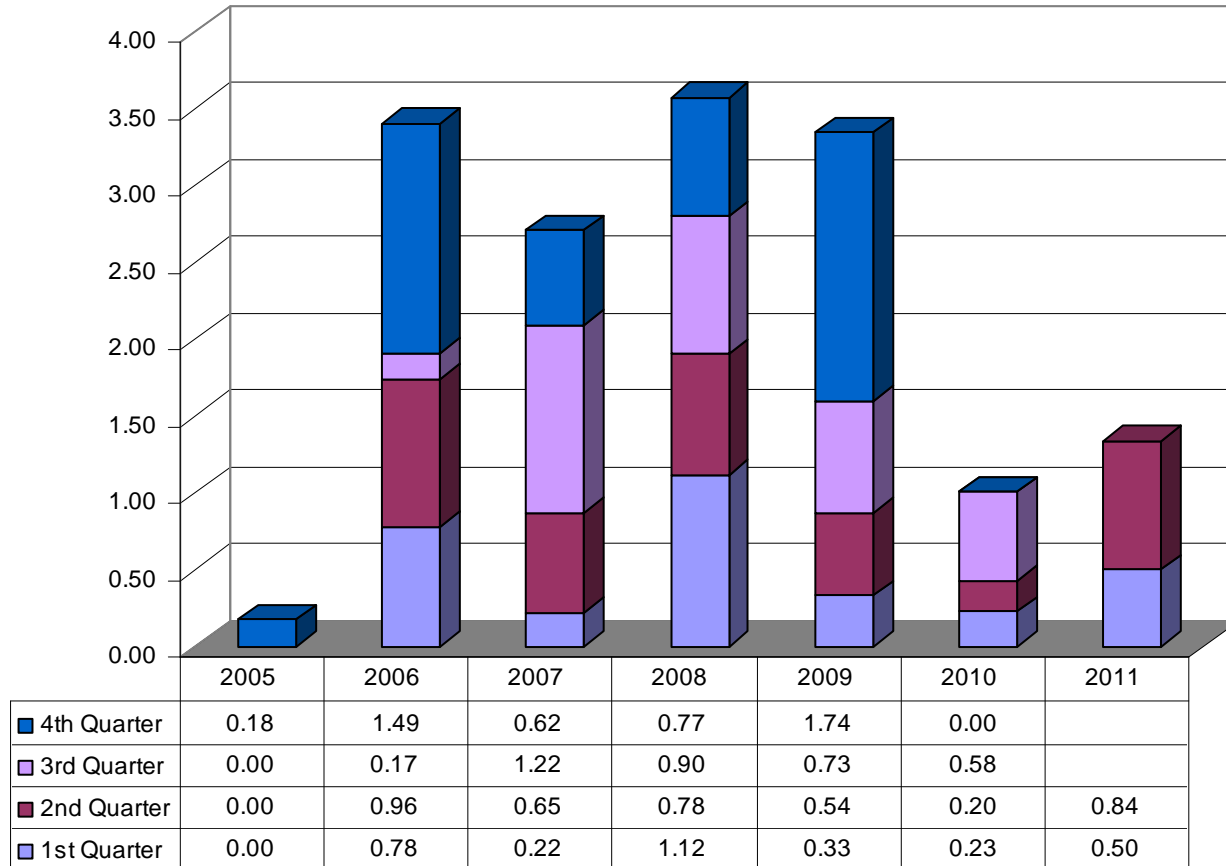
Comment: New sidewalk was constructed on Hilldale Drive, Loxley Avenue, and along the west side of Morningside Drive.

### Sidewalk Construction - Linear Feet Completed



Comment: The 0.5 mile Oak Trail Connection from Frisco Trail to the U of A campus is complete. The Trail Crew is now working on the 2.3 mile U of A Farm Trail. Construction on the U of A Farm Trail will continue through the end of 2011.

### Trails Constructed or in Progress



**Transportation Bond Street Improvements (LTD)**  
**As of June 30, 2011**

**Life-To-Date**

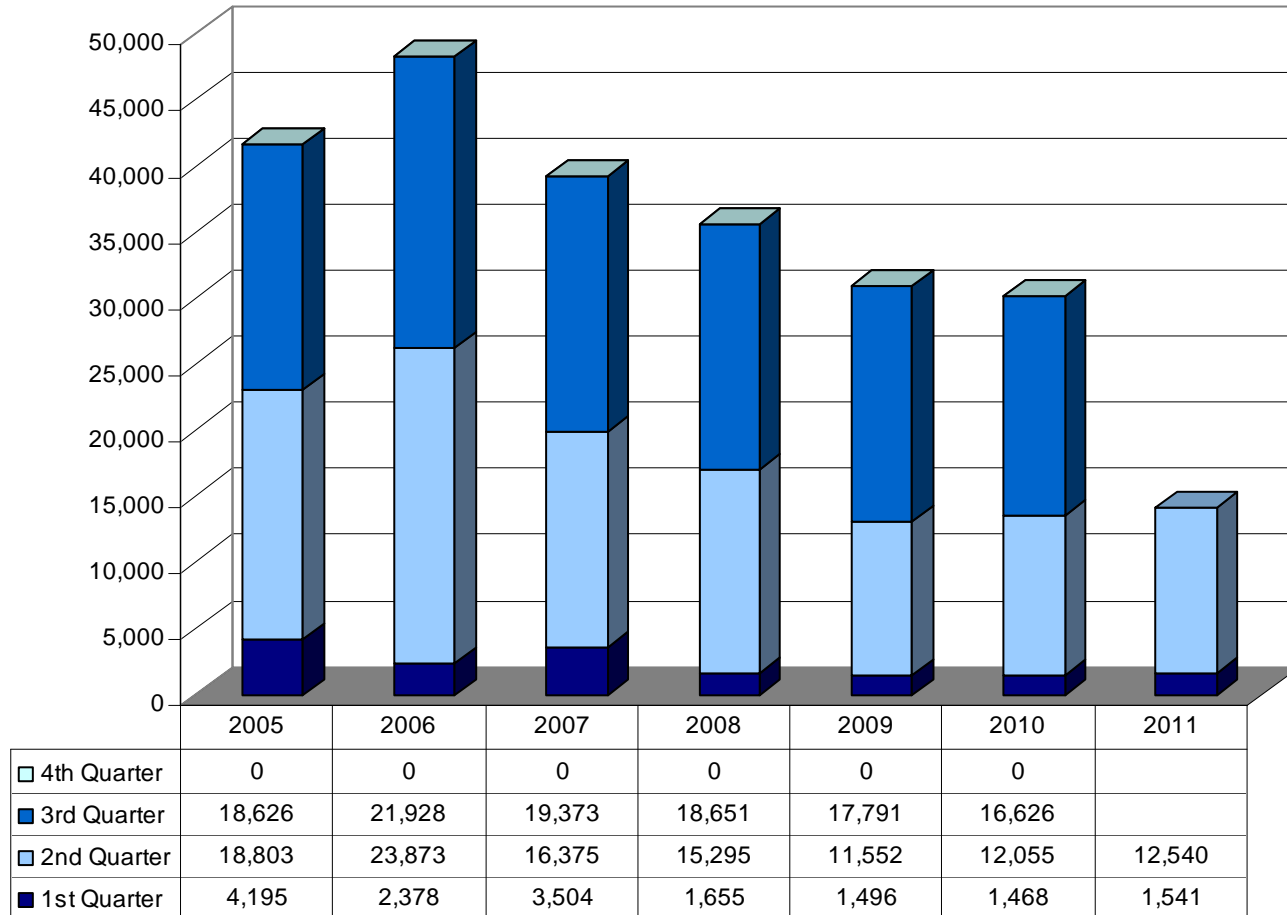
JOB NO.	JOB NAME	STATUS	ORIGINAL ESTIMATE	BUDGET					Expenses To Date Actual	Encumbrance Current Year Actual	Remaining Budget
				Sales Tax	*Trans Bonds PHASE I	*Trans Bonds PHASE II	Water/Sewer Bonds	TOTAL BUDGET			
T01A	Maple & Lafayette Historic Bridges		1,000,000	-	75,000	-	-	75,000	58,829.26	-	16,171.00
T01B	Lafayette, Maple, Gregg St Enhancements		850,000	-	-	-	-	-	-	-	-
T010	Wilson Park/Washington-Willow Area Impvs	Complete	1,440,000	-	910,186	-	-	910,186	910,186.10	-	-
T020	Cato Springs (S. School to Razorback)		2,344,134	2,879,679	1,436,392	907,742	350,000	5,573,813	1,136,073.57	3,957,665.72	480,073.47
T030	Crossover (Mission to City Limits)		7,700,000	-	5,035,000	2,665,000	-	7,700,000	5,001,459.91	-	2,698,540.11
T040	Fifteenth St (Happy Hollow to S College)		2,215,000	-	19,386	2,195,613	-	2,214,999	19,386.32	-	2,195,613.00
T05A	Garland (North to Melmar)		5,195,000	-	20,001	1,500,000	-	1,520,001	14,890.51	-	1,505,110.28
T05B	Garland (North to Melmar) W/S Relocate		-	160,000	-	-	-	160,000	26,653.78	-	133,346.22
T070	Garland (Shiloh to Howard Nickell)		3,494,000	7,803	250,000	-	-	257,803	146,385.72	88,749.29	22,667.71
T090	Huntsville (Happy Hollow to Stonebridge)		907,000	200,000	1,040,000	1,745,000	-	2,985,000	1,049,315.28	-	1,935,685.17
T130	Mount Comfort (Rupple/Alpine)		10,713,000	576,424	10,363,000	-	-	10,939,424	10,060,601.21	172,106.79	706,715.62
T150	Fayetteville Expressway Economic Corridor		1,914,962	881,562	881,115	618,884	-	2,381,562	664,131.83	452,954.90	1,264,474.99
T170	Rupple Road (MLK to Persimmon)		8,155,000	-	50,001	-	-	50,001	3,443.65	-	46,557.00
T240	Zion Road (College to Vantage)	Complete	2,540,000	-	2,274,560	-	-	2,274,560	2,274,559.54	-	-
T250	College Avenue (Rock to Maple)	Complete	1,740,000	-	1,840,897	-	-	1,840,897	1,840,896.77	-	-
T500	Right of Way Acquisition/Cost Sharing		8,800,000	-	212,100	-	-	212,100	212,100.00	-	-
T550	Miscellaneous		6,841,904	-	71,485	1,135	-	72,620	49,026.62	-	23,592.93
T600	Van Asche (Garland to Gregg)		50,000	-	102,468	-	-	102,468	18,863.86	28,961.44	54,643.08
			<b>65,900,000</b>	<b>4,705,468</b>	<b>24,581,590</b>	<b>9,633,374</b>	<b>350,000</b>	<b>39,270,433</b>	<b>23,486,803.93</b>	<b>4,700,438.14</b>	<b>11,083,190.58</b>

\*Phase I: Oct 2006 - Sept 2009

\*Phase II: Oct 2009-Jan 2014

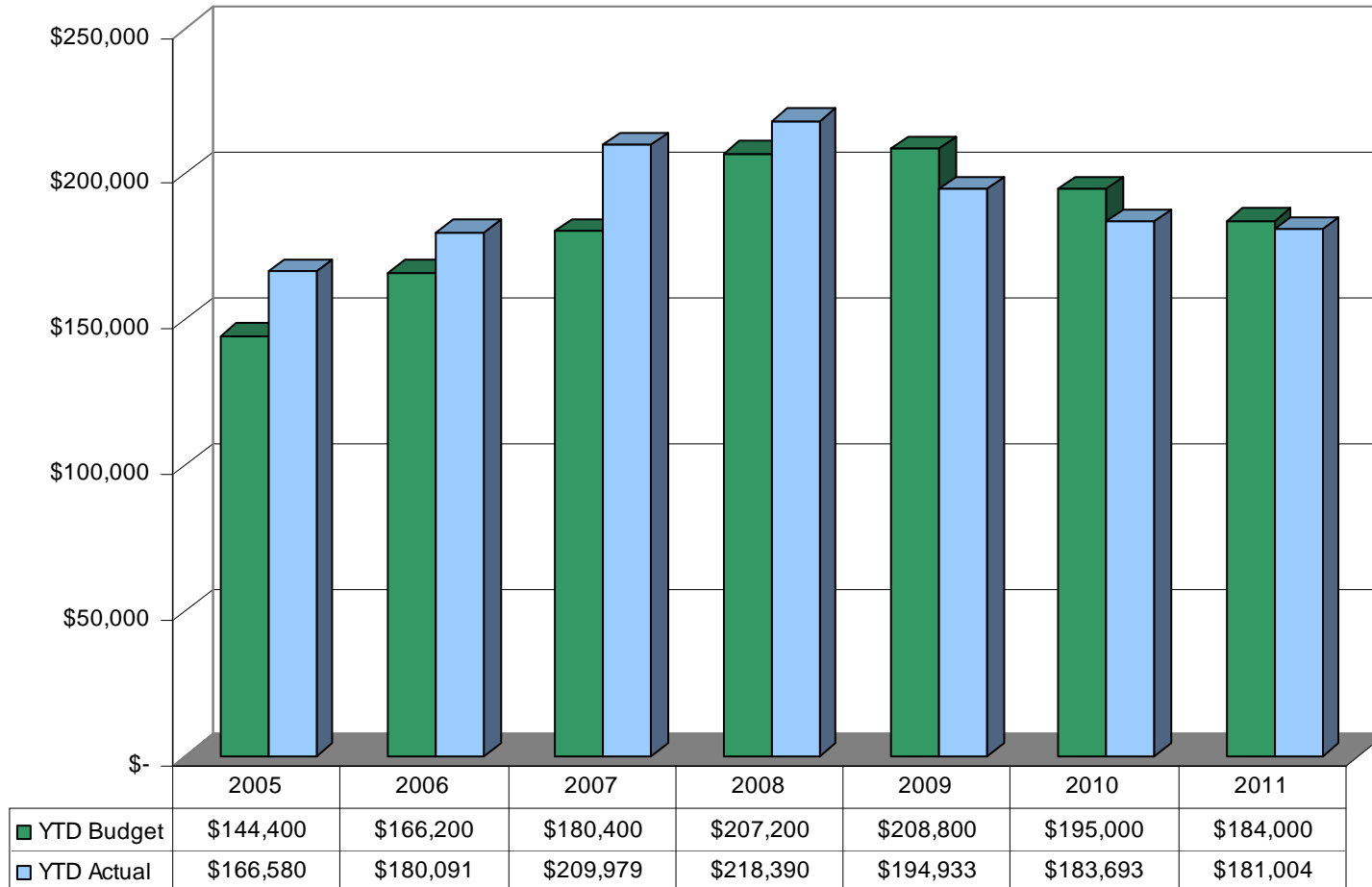
Comment: There are more participants in soccer and adult softball this year.

### Number of Parks & Recreation Program Participants



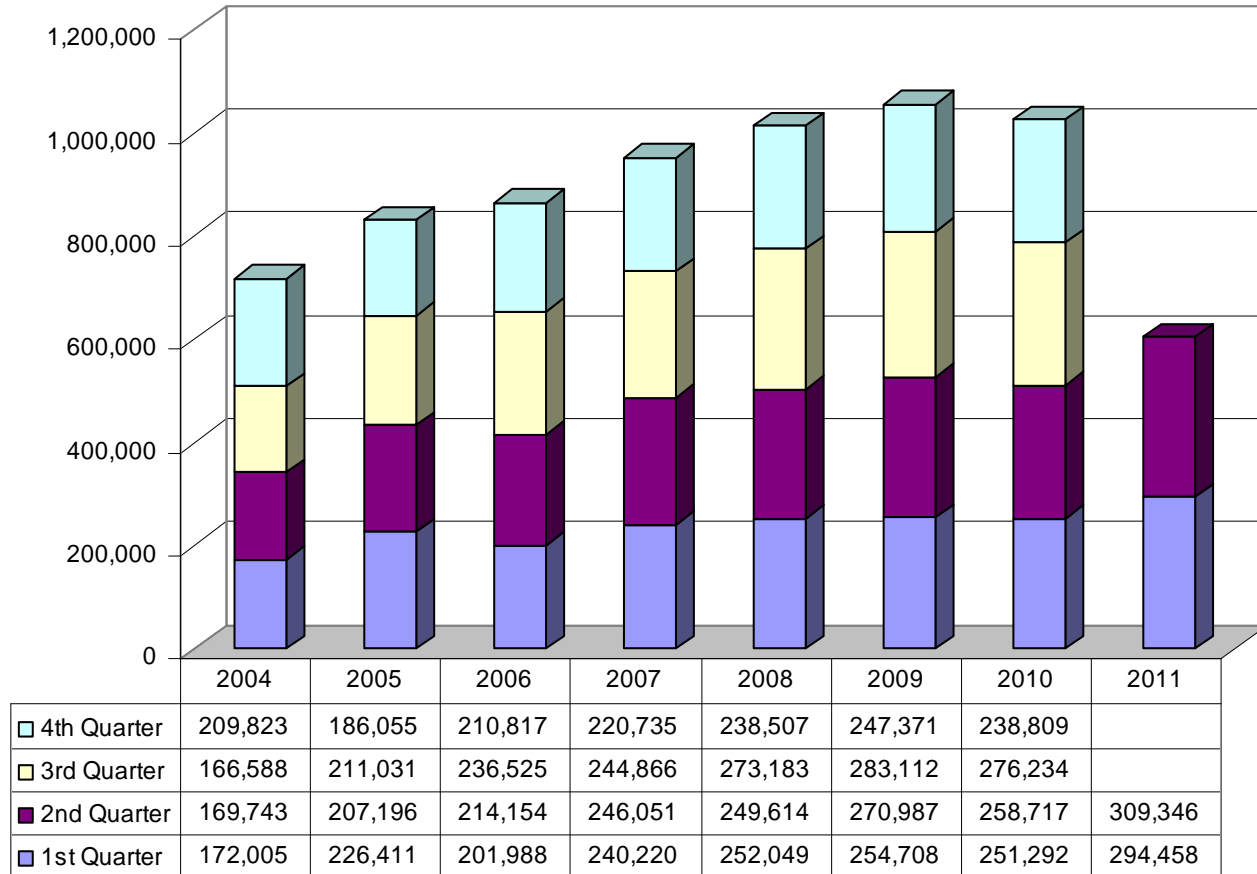
Comment: Registration dates for summer and fall programs are still open and revenues will continue to be received in the third quarter.

### Parks & Recreation Program Revenue Year-to-Date



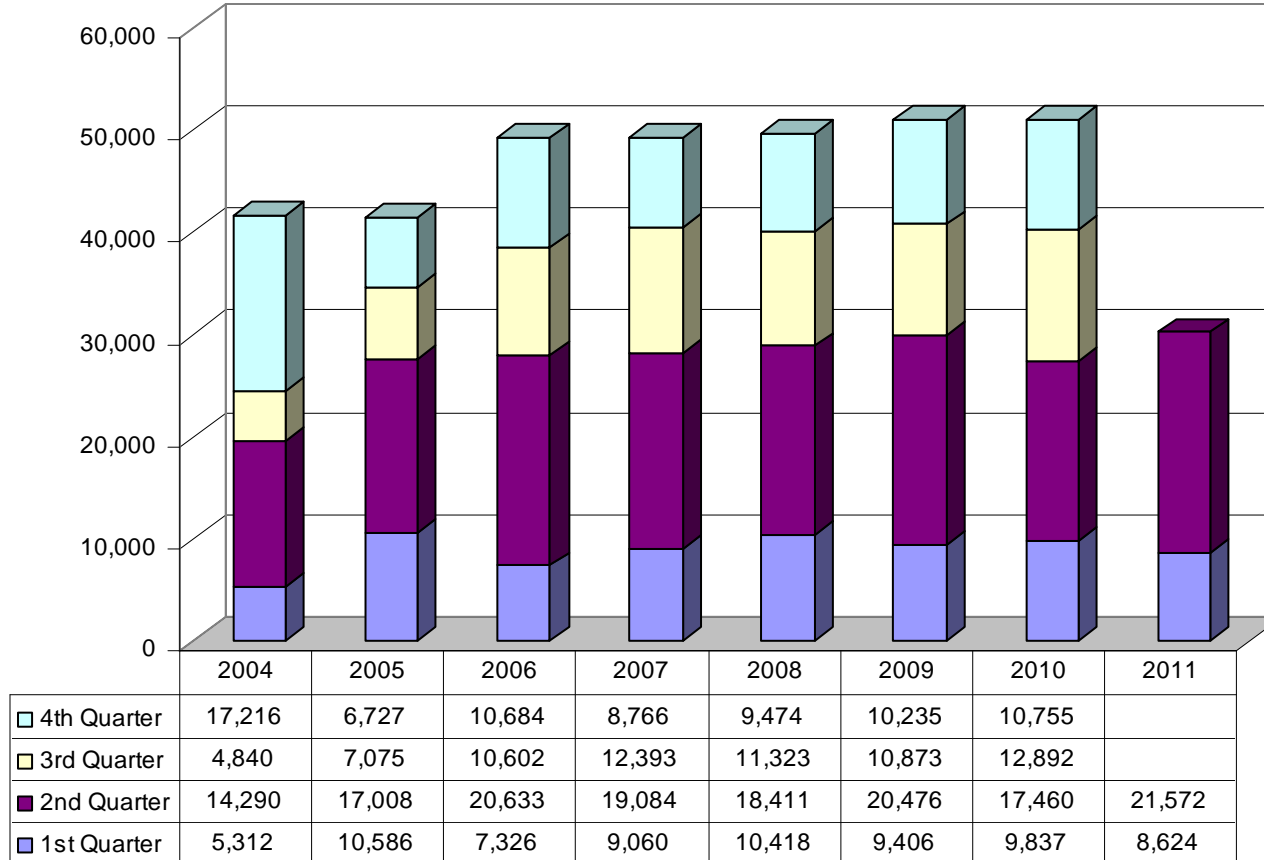
Comment: Check outs are up over 18% for the year. June 2011 check outs were 113,153, the highest ever single month usage, breaking the previous record set in March of this year. Check outs are currently tracking to hit an all-time annual high.

### Library Check Outs



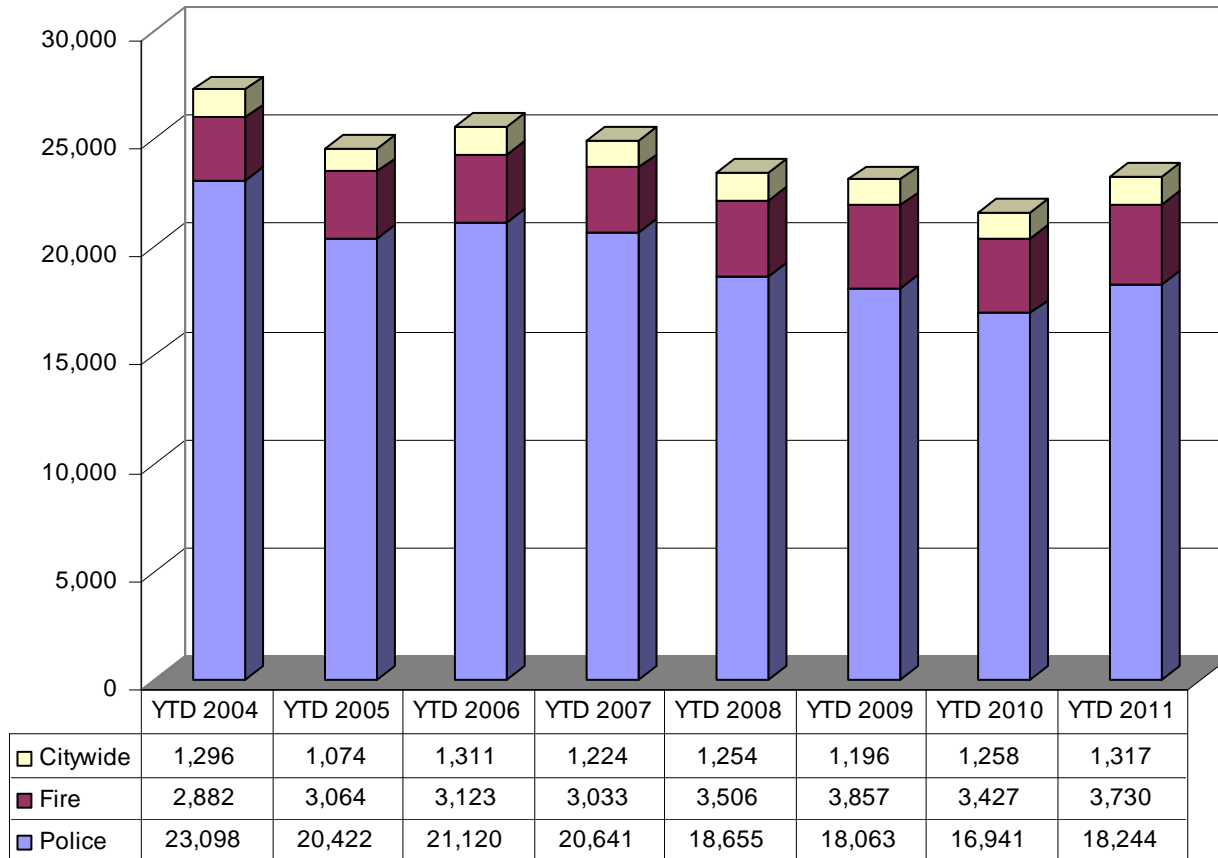
Comment: Attendance rebounded in the second quarter and is up 2.3% over the same period last year. June marked the beginning of the well-attended Summer Reading Club activities for preschool - high school age students.

### Library Program Attendees



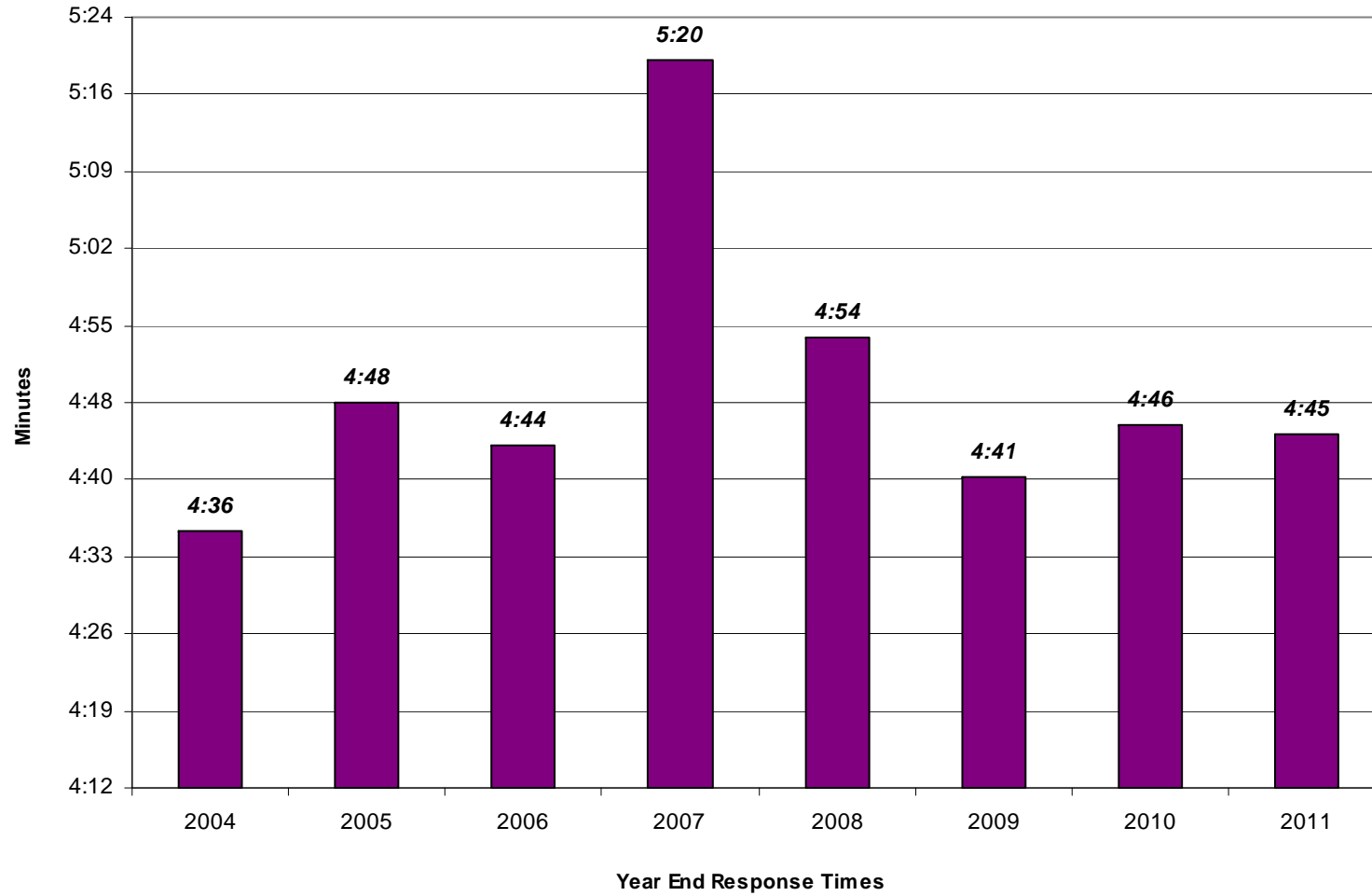
Comment: Police calls have increased over the 2010 second quarter by 9%. Staff received over 1,950 more Priority 1 and 2 calls than 2010. Priority 3 calls decreased during this same time.

### Central Dispatch Calls for Service



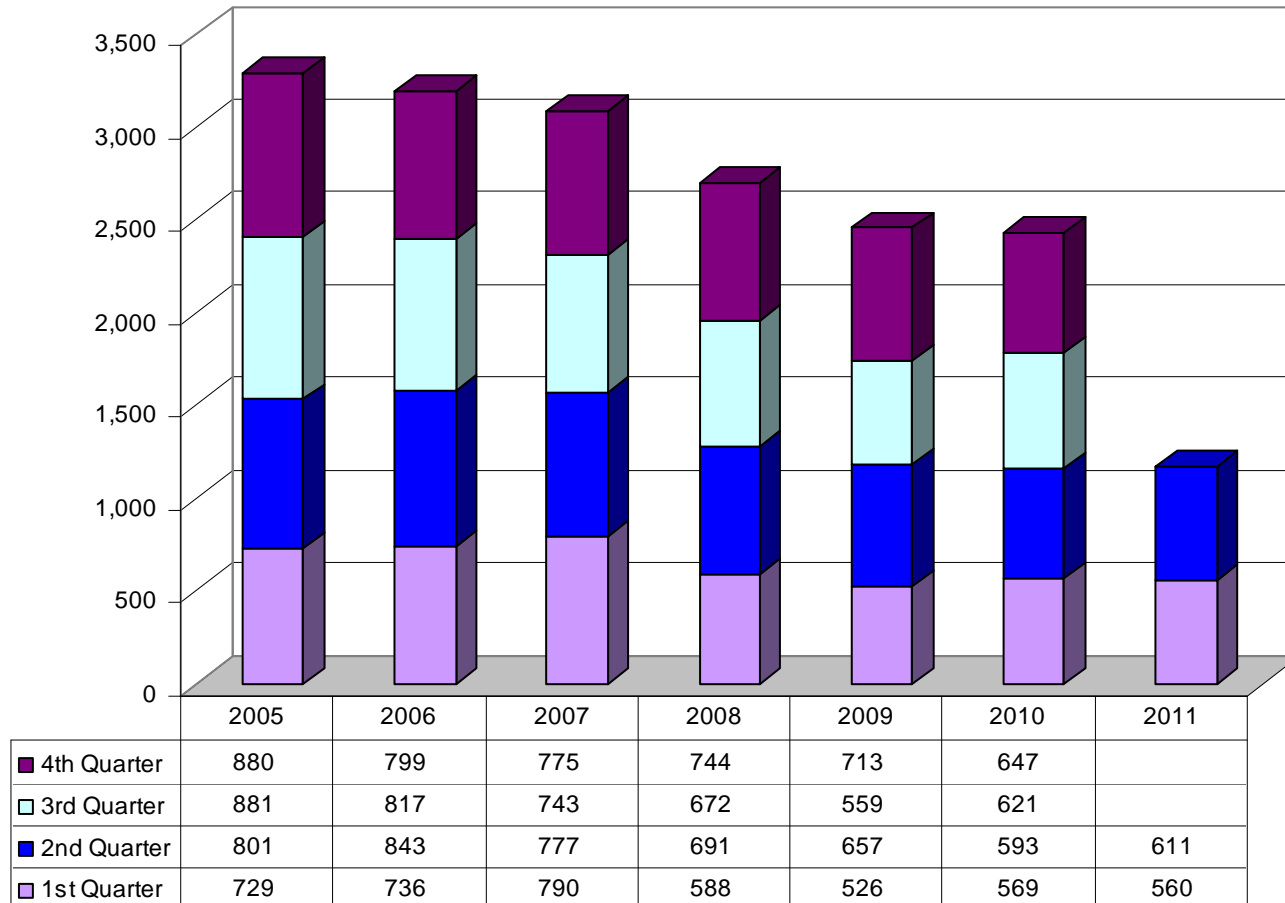
Comment: Response time to priority one calls decreased one second compared to 2010.

## Police Emergency Response



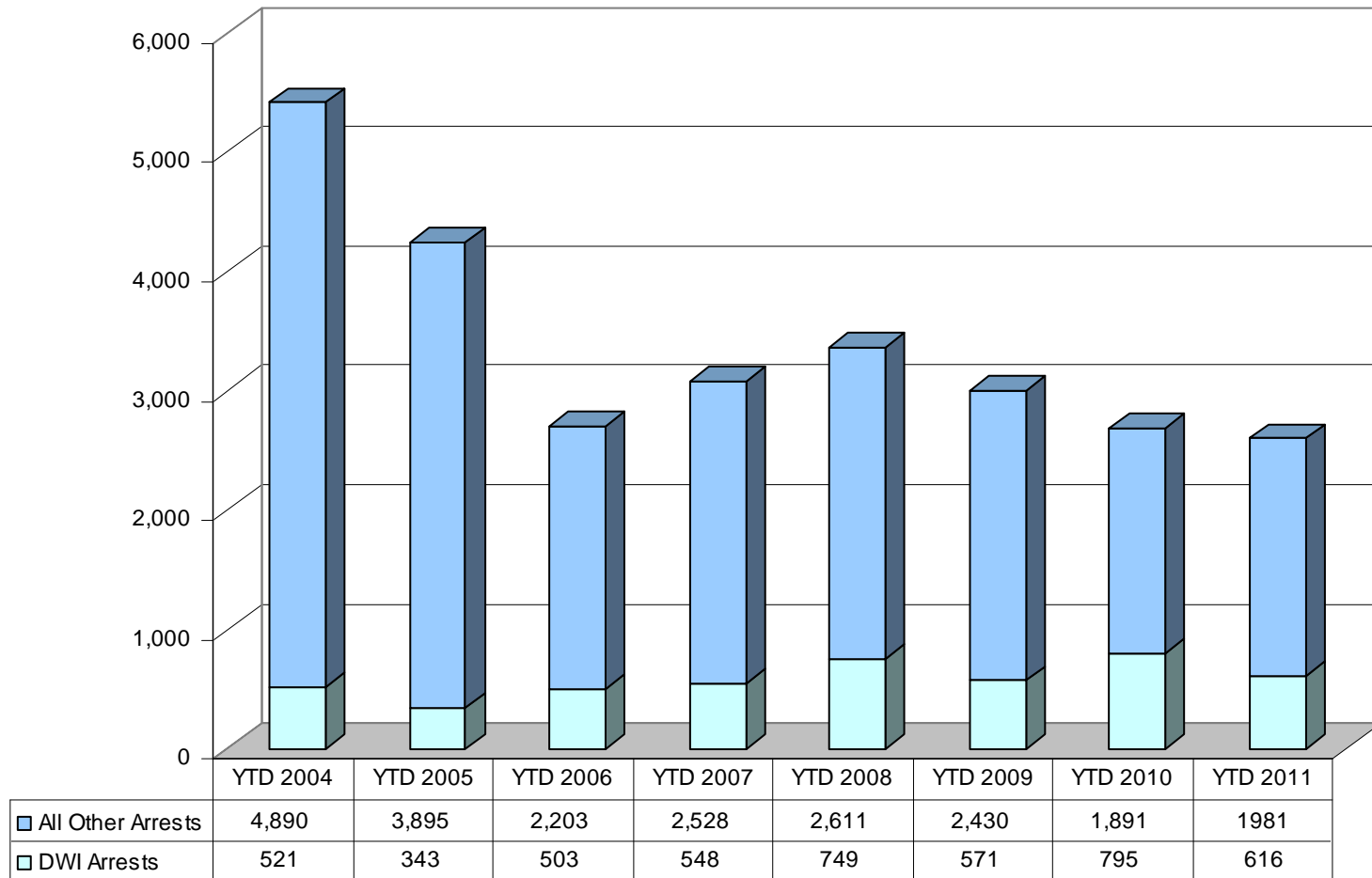
Comment: Accidents were down by 1.5% year to date in 2011. There are many factors affecting these numbers, such as but not limited to, traffic enforcement, weather, amount of traffic, and road construction.

### Traffic Accidents Worked by Police



Comment: DWI arrests are down 2.84% year to date. During the first and second quarters, staff utilized grants to provide officer over-time to work DWI. This resulted in more contacts with the public and more public awareness to prevent drunk driving.

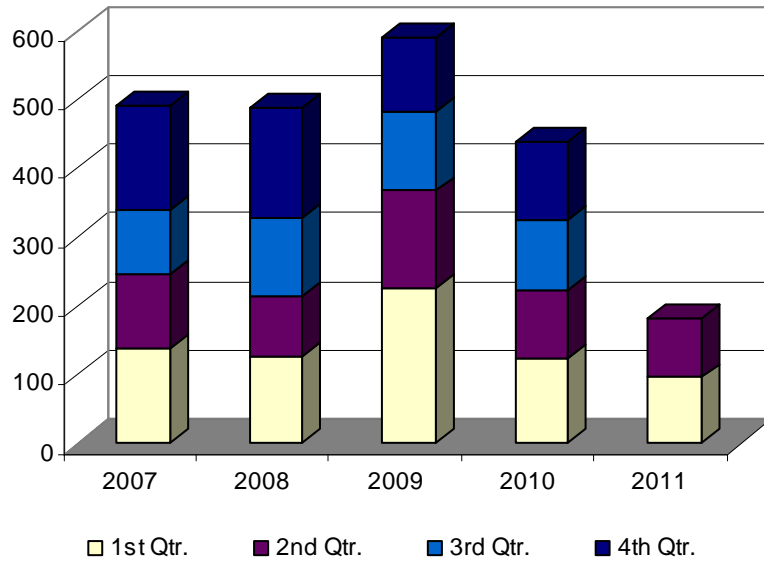
### Police Arrests



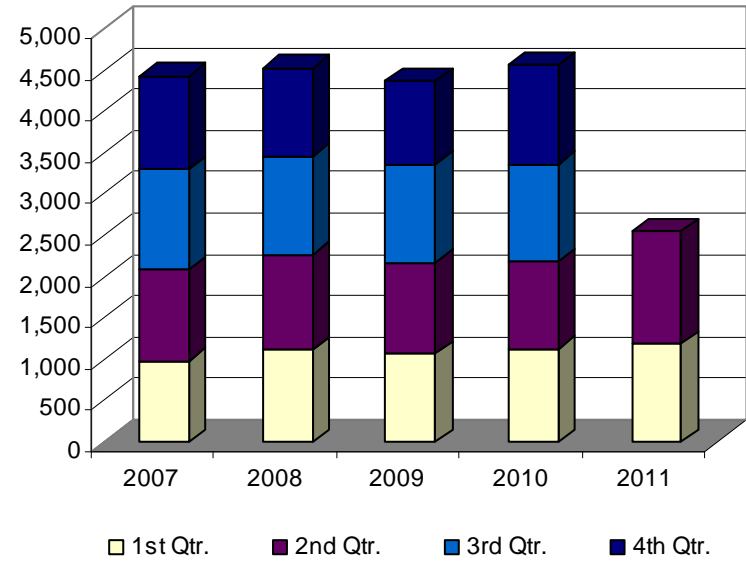
Comment: The number of Fire responses continues to decline. However, EMS responses for the first two quarters are 16% higher than in 2010.

## Fire Department Annual Calls for Service

### Fire Responses



### EMS Responses



#### Fire Responses

Year	1st Qtr.	2nd Qtr.	3rd Qtr.	4th Qtr.
2007	138	109	92	151
2008	126	89	113	160
2009	226	141	116	108
2010	123	99	103	114
2011	96	86		

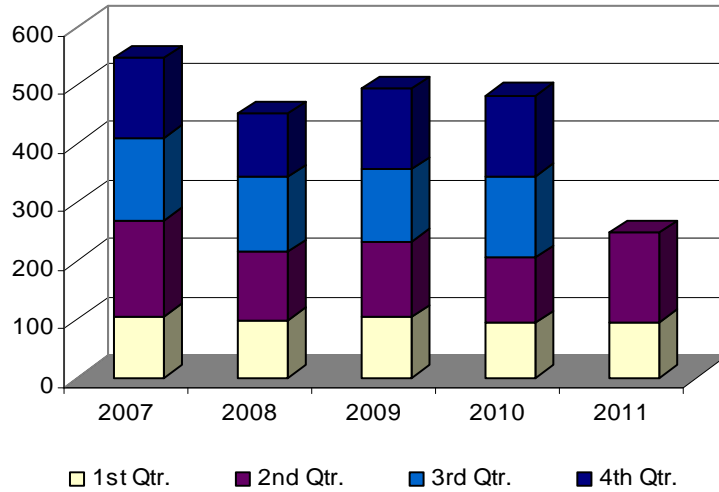
#### EMS Responses

Year	1st Qtr.	2nd Qtr.	3rd Qtr.	4th Qtr.
2007	986	1,103	1,214	1,125
2008	1,124	1,148	1,188	1,069
2009	1,065	1,108	1,188	1,006
2010	1,130	1,056	1,173	1,203
2011	1,195	1,350		

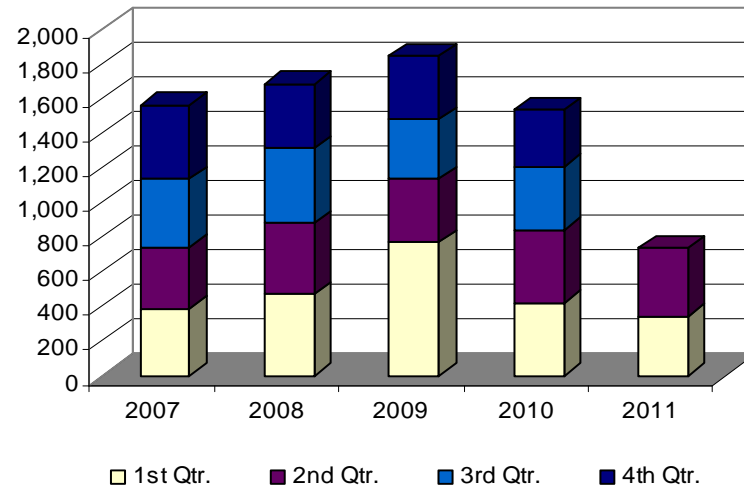
Comment: The spike in rescue responses in the second quarter are due to the severe flooding in April and May. Other Responses are down compared with 2010.

## Fire Department Annual Calls for Service

### Rescue Responses



### Other Responses



#### Rescue Responses

Year	1st Qtr.	2nd Qtr.	3rd Qtr.	4th Qtr.
2007	105	164	141	136
2008	98	116	128	109
2009	104	129	122	138
2010	94	111	139	138
2011	95	153		

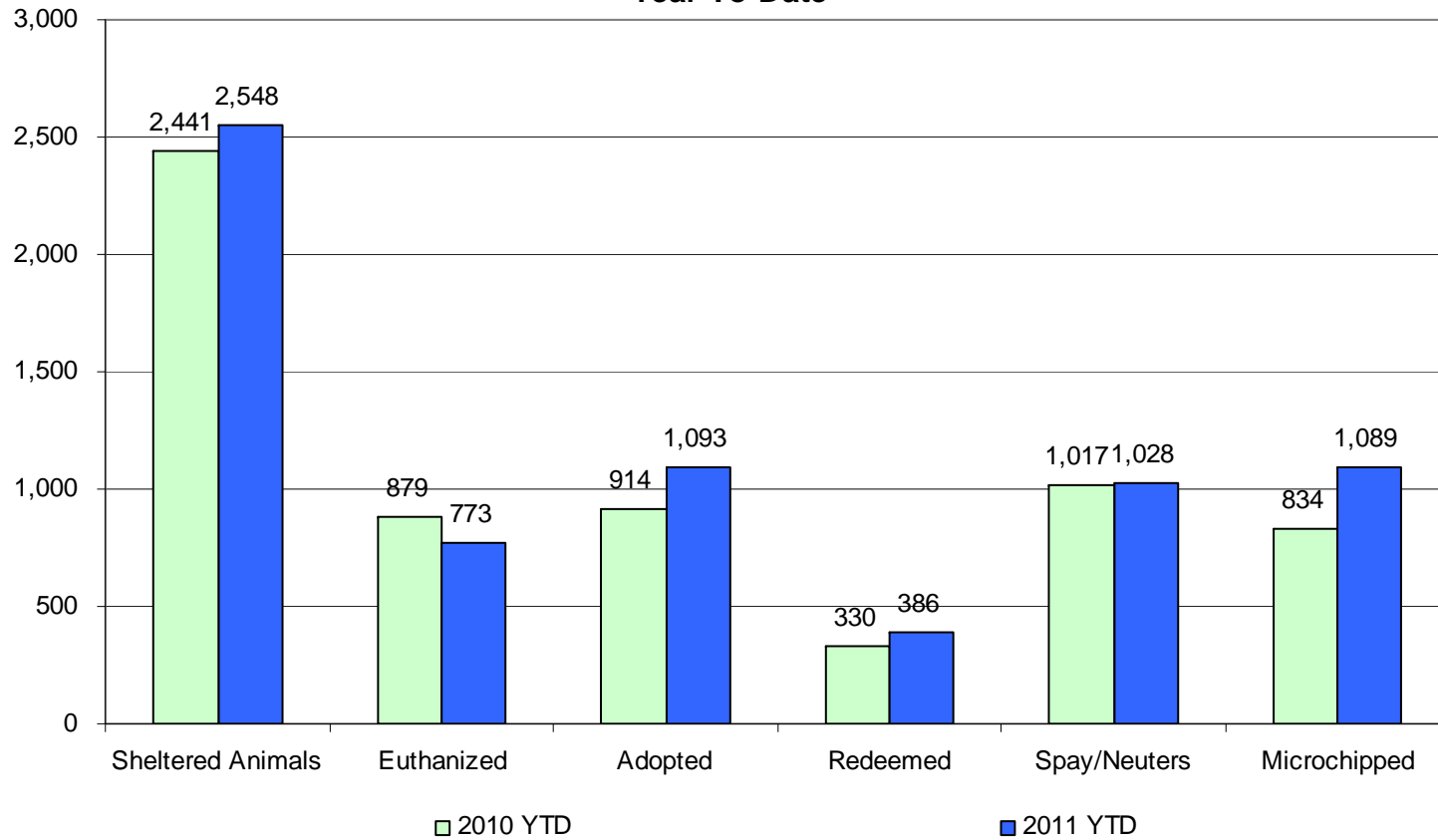
#### Other Responses\*

Year	1st Qtr.	2nd Qtr.	3rd Qtr.	4th Qtr.
2007	386	352	395	424
2008	472	408	430	370
2009	770	363	343	366
2010	420	418	369	321
2011	343	393		

\*Other responses consist of services calls, unknown substances, smoke in the area, smoke checks, vehicle accidents with no injury or entrapment, burning complaints, non-reportable haz-mats, or to assist a person.

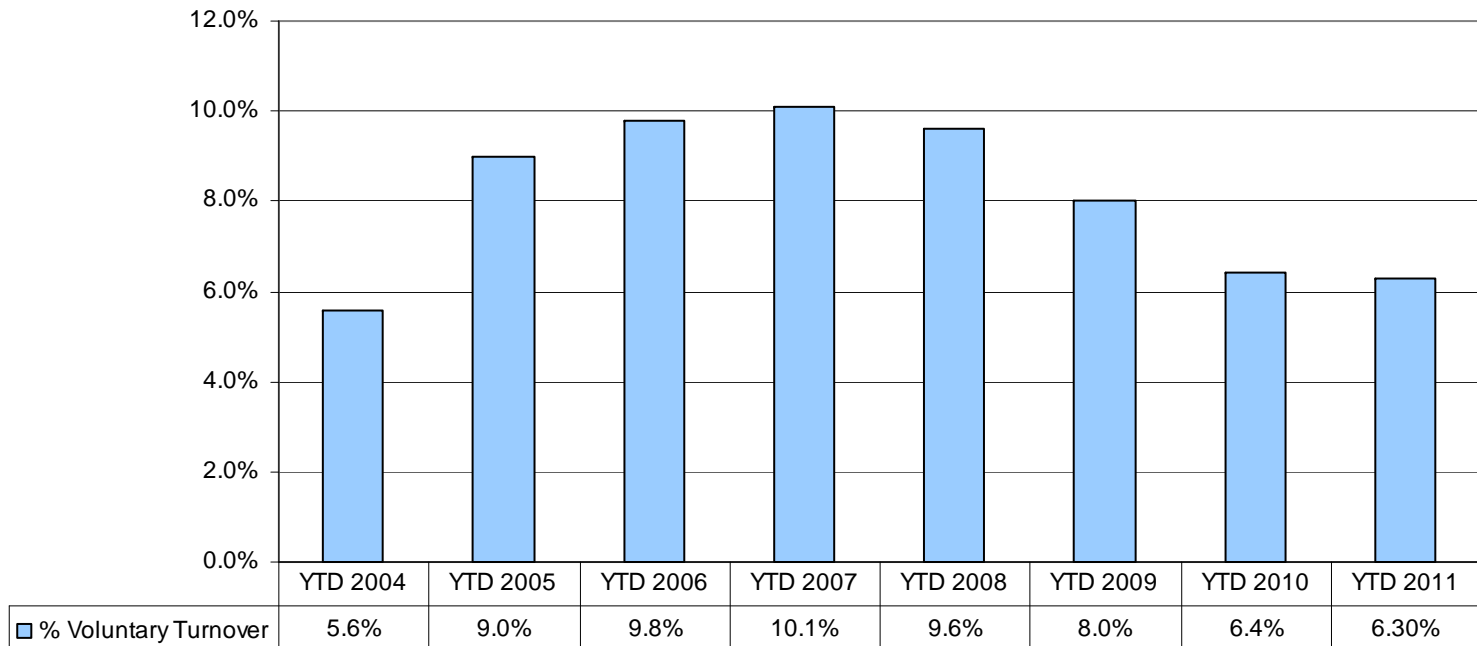
Comment: This is a breakdown of the animals that enter the shelter system and their ultimate disposition status.

### Animal Services Population Details Year-To-Date



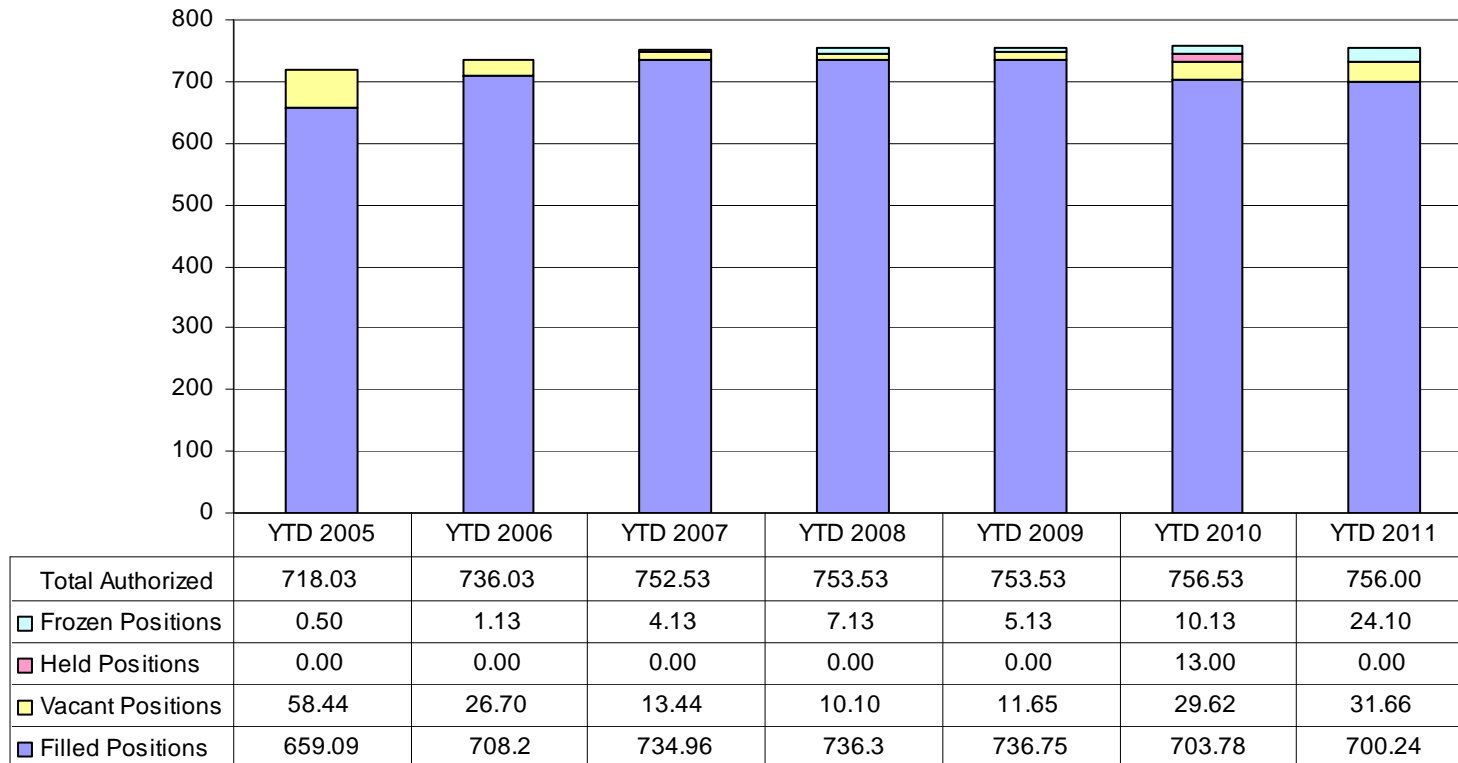
Comment: This chart reflects the percentage of employees who have voluntarily resigned within the year.

### Percent of Voluntary Personnel Turnover



Comment: In addition to freezing 24.1 FTE's this year, the number of current vacancies were up slightly in FTE's compared to 2010.

### Number of Authorized Employee Positions Compared to Positions Filled (Expressed in FTE's)



Due to 29.00 FTE's being added in the 2005 Adopted Budget, the vacant positions number would be higher than normal because of the hiring timeframe.

## Budget Amendment Report (Approved by City Council) - Second Quarter 2011

### Heading Definitions:

FUND: Funding Source

DESCRIPTION: Budget Amendment Number and Description

ADOPTED BUDGET: Original Adopted Expense Budget

RE-BUDGETS: Re-appropriations from the previous fiscal year.

REVENUES: Budget Amendments that are funded from a source of funds other than Fund Balance.

FUND BALANCE: Budget Amendments coming from Fund Balance.

AMENDED BUDGET: Amended Expense Budget

### Summary by Funding Source

FUND	ADOPTED BUDGET	RE-BUDGETS	REVENUES	FUND BALANCE	AMENDED BUDGET
1010 General	33,885,500	940,985	19,864	390,000	35,236,349
2100 Street	4,390,000	599,393	-	346,000	5,335,393
2130 Parking	1,065,100	61,112	-	4,000	1,130,212
2180 Community Development Block Grant	695,800	612,899	(90,292)	-	1,218,407
2230 Special State Grants	-	55,399	-	-	55,399
2240 Energy Block Grant	-	460,713	-	-	460,713
2250 Parks Development	2,424,600	4,338,063	4,896	22,000	6,789,559
2300 Impact Fee	1,260,000	6,411,656	-	-	7,671,656
2930 Drug Law Enforcement	494,000	31,650	-	-	525,650
3360 Fire Bond	424,800	-	-	-	424,800
3370 TIF Bond	63,700	-	-	50,687	114,387
3440 Sales Tax Bond	15,373,700	-	-	-	15,373,700
4270 Replacement & Disaster Recovery	45,100	136,797	-	-	181,897
4470 Sales Tax Capital Improvements	6,390,000	9,045,175	3,176,361	-	18,611,536
4480 Wastewater System Improvements Project	-	3,046,222	-	-	3,046,222
4520 Sales Tax Construction Bond	6,000	15,487,882	-	-	15,493,882
5400 Water & Sewer	30,901,000	13,695,918	3,882,202	120,000	48,599,120
5500 Solid Waste	9,208,300	1,748,821	-	50,000	11,007,121
5550 Airport	770,800	830,141	144,000	39,900	1,784,841
5600 Town Center	702,700	-	-	-	702,700
6800 Police Pension	1,692,800	-	-	-	1,692,800
6810 Fire Pension	1,480,400	-	-	-	1,480,400
9700 Shop	7,239,900	1,337,962	160,352	75,150	8,813,364
<b>Grand Total</b>	<b>118,514,200</b>	<b>58,840,788</b>	<b>7,297,383</b>	<b>1,097,737</b>	<b>185,750,108</b>

## Budget Amendment Detail Report - Second Quarter 2011

FUND	DESCRIPTION	ADOPTED BUDGET	RE-BUDGETS	REVENUES	FUND BALANCE	AMENDED BUDGET
<b>1010 General</b>		<b>33,885,500</b>	<b>940,985</b>	<b>19,864</b>	<b>390,000</b>	<b>35,236,349</b>
	11-000 - Original Adopted Budget	33,885,500	-	-	-	33,885,500
	11-015 - Donation Emp Banquet	-	-	300	-	300
	11-020 - Donation Emp Banquet	-	-	100	-	100
	11-044 - Service Awards	-	-	-	390,000	390,000
	11-074 - 2010 Dona Ani Svcs	-	-	17,464	-	17,464
	11-129 - Life Vest-Walmart	-	-	2,000	-	2,000
	11-B00 - Prior Reappropriations	-	940,985	-	-	940,985
	11-M01 - April July PP Adjs	-	-	-	-	-
<b>2100 Street</b>		<b>4,390,000</b>	<b>599,393</b>	<b>-</b>	<b>346,000</b>	<b>5,335,393</b>
	11-000 - Original Adopted Budget	4,390,000	-	-	-	4,390,000
	11-044 - Service Awards	-	-	-	60,000	60,000
	11-133 - Phase II Radio Project	-	-	-	286,000	286,000
	11-B00 - Prior Reappropriations	-	599,393	-	-	599,393
	11-M01 - April July PP Adjs	-	-	-	-	-
<b>2130 Parking</b>		<b>1,065,100</b>	<b>61,112</b>	<b>-</b>	<b>4,000</b>	<b>1,130,212</b>
	11-000 - Original Adopted Budget	1,065,100	-	-	-	1,065,100
	11-044 - Service Awards	-	-	-	4,000	4,000
	11-B00 - Prior Reappropriations	-	61,112	-	-	61,112
	11-M01 - April July PP Adjs	-	-	-	-	-
<b>2180 Community Development Block Grant</b>		<b>695,800</b>	<b>612,899</b>	<b>(90,292)</b>	<b>-</b>	<b>1,218,407</b>
	11-000 - Original Adopted Budget	695,800	-	-	-	695,800
	11-097 - Ranger's Pantry Donate	-	-	1,619	-	1,619
	11-130 - Annual Grant Amount	-	-	(91,911)	-	(91,911)
	11-B00 - Prior Reappropriations	-	612,899	-	-	612,899
	11-M01 - April July PP Adjs	-	-	-	-	-
<b>2230 Special State Grants</b>		<b>-</b>	<b>55,399</b>	<b>-</b>	<b>-</b>	<b>55,399</b>
	11-B00 - Prior Reappropriations	-	55,399	-	-	55,399
<b>2240 Energy Block Grant</b>		<b>-</b>	<b>460,713</b>	<b>-</b>	<b>-</b>	<b>460,713</b>
	11-B00 - Prior Reappropriations	-	460,713	-	-	460,713

## Budget Amendment Detail Report - Second Quarter 2011

FUND	DESCRIPTION	ADOPTED BUDGET	RE-BUDGETS	REVENUES	FUND BALANCE	AMENDED BUDGET
<b>2250 Parks Development</b>		<b>2,424,600</b>	<b>4,338,063</b>	<b>4,896</b>	<b>22,000</b>	<b>6,789,559</b>
	11-000 - Original Adopted Budget	2,424,600	-	-	-	2,424,600
	11-017 - Niokaska Restoration	-	-	4,896	-	4,896
	11-044 - Service Awards	-	-	-	22,000	22,000
	11-B00 - Prior Reappropriations	-	4,338,063	-	-	4,338,063
	11-M01 - April July PP Adjs	-	-	-	-	-
<b>2300 Impact Fee</b>		<b>1,260,000</b>	<b>6,411,656</b>	-	-	<b>7,671,656</b>
	11-000 - Original Adopted Budget	1,260,000	-	-	-	1,260,000
	11-B00 - Prior Reappropriations	-	6,411,656	-	-	6,411,656
<b>2930 Drug Law Enforcement</b>		<b>494,000</b>	<b>31,650</b>	-	-	<b>525,650</b>
	11-000 - Original Adopted Budget	494,000	-	-	-	494,000
	11-B00 - Prior Reappropriations	-	31,650	-	-	31,650
	11-M01 - April July PP Adjs	-	-	-	-	-
<b>3360 Fire Bond</b>		<b>424,800</b>	-	-	-	<b>424,800</b>
	11-000 - Original Adopted Budget	424,800	-	-	-	424,800
<b>3370 TIF Bond</b>		<b>63,700</b>	-	-	<b>50,687</b>	<b>114,387</b>
	11-000 - Original Adopted Budget	63,700	-	-	-	63,700
	11-033 - Bond Redemption	-	-	-	50,687	50,687
<b>3440 Sales Tax Bond</b>		<b>15,373,700</b>	-	-	-	<b>15,373,700</b>
	11-000 - Original Adopted Budget	15,373,700	-	-	-	15,373,700
<b>4270 Replacement &amp; Disaster Recovery</b>		<b>45,100</b>	<b>136,797</b>	-	-	<b>181,897</b>
	11-000 - Original Adopted Budget	45,100	-	-	-	45,100
	11-B00 - Prior Reappropriations	-	136,797	-	-	136,797

## Budget Amendment Detail Report - Second Quarter 2011

FUND	DESCRIPTION	ADOPTED BUDGET	RE-BUDGETS	REVENUES	FUND BALANCE	AMENDED BUDGET
<b>4470 Sales Tax Capital Improvements</b>		<b>6,390,000</b>	<b>9,045,175</b>	<b>3,176,361</b>	-	<b>18,611,536</b>
	11-000 - Original Adopted Budget	6,390,000	-	-	-	6,390,000
	11-005 - Fay Econ Dev Corridor	-	-	296,682	-	296,682
	11-134 - Cato Springs Road	-	-	2,879,679	-	2,879,679
	11-B00 - Prior Reappropriations	-	9,045,175	-	-	9,045,175
<b>4480 Wastewater System Improvements Proj</b>		-	<b>3,046,222</b>	-	-	<b>3,046,222</b>
	11-B00 - Prior Reappropriations	-	3,046,222	-	-	3,046,222
<b>4520 Sales Tax Construction Bond</b>		<b>6,000</b>	<b>15,487,882</b>	-	-	<b>15,493,882</b>
	11-000 - Original Adopted Budget	6,000	-	-	-	6,000
	11-B00 - Prior Reappropriations	-	15,487,882	-	-	15,487,882
<b>5400 Water &amp; Sewer</b>		<b>30,901,000</b>	<b>13,695,918</b>	<b>3,882,202</b>	<b>120,000</b>	<b>48,599,120</b>
	11-000 - Original Adopted Budget	30,901,000	-	-	-	30,901,000
	11-004 - W&S Ops Efficiency	-	-	-	35,000	35,000
	11-012 - Power/Stone Mtn Pump	-	-	45,751	-	45,751
	11-044 - Service Awards	-	-	-	85,000	85,000
	11-058 - Impact Fee Funds	-	-	1,110,331	-	1,110,331
	11-079 - HWY 265/Garney	-	-	2,241,120	-	2,241,120
	11-089 - STAG Grant/Elkins Sew	-	-	485,000	-	485,000
	11-B00 - Prior Reappropriations	-	13,695,918	-	-	13,695,918
	11-M01 - April July PP Adjs	-	-	-	-	-
<b>5500 Solid Waste</b>		<b>9,208,300</b>	<b>1,748,821</b>	-	<b>50,000</b>	<b>11,007,121</b>
	11-000 - Original Adopted Budget	9,208,300	-	-	-	9,208,300
	11-044 - Service Awards	-	-	-	50,000	50,000
	11-B00 - Prior Reappropriations	-	1,748,821	-	-	1,748,821
	11-M01 - April July PP Adjs	-	-	-	-	-
<b>5550 Airport</b>		<b>770,800</b>	<b>830,141</b>	<b>144,000</b>	<b>39,900</b>	<b>1,784,841</b>
	11-000 - Original Adopted Budget	770,800	-	-	-	770,800
	11-044 - Service Awards	-	-	-	3,900	3,900
	11-099 - Airport Security	-	-	144,000	36,000	180,000
	11-B00 - Prior Reappropriations	-	830,141	-	-	830,141
	11-M01 - April July PP Adjs	-	-	-	-	-

## Budget Amendment Detail Report - Second Quarter 2011

FUND	DESCRIPTION	ADOPTED BUDGET	RE-BUDGETS	REVENUES	FUND BALANCE	AMENDED BUDGET
<b>5600 Town Center</b>		<b>702,700</b>	-	-	-	<b>702,700</b>
	11-000 - Original Adopted Budget	702,700	-	-	-	702,700
<b>6800 Police Pension</b>		<b>1,692,800</b>	-	-	-	<b>1,692,800</b>
	11-000 - Original Adopted Budget	1,692,800	-	-	-	1,692,800
<b>6810 Fire Pension</b>		<b>1,480,400</b>	-	-	-	<b>1,480,400</b>
	11-000 - Original Adopted Budget	1,480,400	-	-	-	1,480,400
<b>9700 Shop</b>		<b>7,239,900</b>	<b>1,337,962</b>	<b>160,352</b>	<b>75,150</b>	<b>8,813,364</b>
	11-000 - Original Adopted Budget	7,239,900	-	-	-	7,239,900
	11-006 - Tractor Solar Drying	-	-	72,675	-	72,675
	11-007 - Tax on Spreader-Drying	-	-	1,850	-	1,850
	11-008 - Sales Tax Walking Tr	-	-	4,450	-	4,450
	11-023 - Unit 9059 Replacement	-	-	-	20,500	20,500
	11-044 - Service Awards	-	-	-	15,000	15,000
	11-047 - Replace Unit 459	-	-	-	6,500	6,500
	11-080 - Manure Conveyors	-	-	44,040	-	44,040
	11-081 - Top Dresser for Parks	-	-	5,793	14,107	19,900
	11-082 - Replace Unit 2025	-	-	16,733	7,867	24,600
	11-083 - Purchase of Unit #1127	-	-	3,640	8,284	11,924
	11-084 - Replace Unit #2018	-	-	11,171	2,892	14,063
	11-B00 - Prior Reappropriations	-	1,337,962	-	-	1,337,962
	11-M01 - April July PP Adjs	-	-	-	-	-
<b>Grand Total</b>		<b>118,514,200</b>	<b>58,840,788</b>	<b>7,297,383</b>	<b>1,097,737</b>	<b>185,750,108</b>