

Wastewater System Improvement Project

West Line Work Ribbon Cutting

March 6, 2008 • 4:30PM

Hamestring Lift Station

2065 North Sunshine Road, Fayetteville



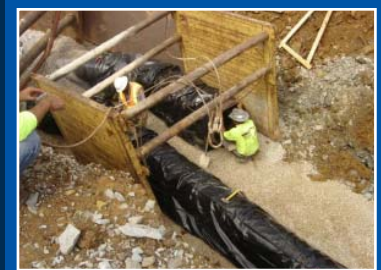
WL-2 Sycamore Tunnel



WL-4 Mount Comfort

The Wastewater System Improvement Project (WSIP) is a system wide project that significantly increases the capacity of the City of Fayetteville's wastewater system. The project addresses capacity shortfalls in the wastewater collection and treatment systems; the design is expected to treat the wastewater for 115,000 people.

This project will increase the City's wastewater treatment capacity from 12.6 to 21.2 million gallons per day, and will significantly reduce the number of sewer system overflows due to rain and ground water entering the system. It also improves odor control facilities system wide. The new transmission pipelines are designed to carry flows from their respective areas for a full 100+ years of growth. The West Side Wastewater Treatment Plant will start treating wastewater in mid 2008. Much of the east side work (Noland WWTP and pipe lines leading thereto) will be completed in late 2009, after the flow is diverted to the West Side Wastewater Treatment Plant.



WL-5 Broyles & 1st Force Main



WL-6 Hamestring Lift Station

2006

WL-1 Old Wire to Gregg

May 2006

- Construct 15,770' of 21-36" gravity sewer pipe line
- Cost included with WL3
- Oscar Renda Contractors

May 2007



WL-1 Front St. Enhancing Trails



WL-1 College Ave. Filter



WL-1 Old Missouri Tunnel

WL-2 North to Poplar to Van Asche

January 2007

- Construct 13,900' - 24-33" gravity sewer pipe line
- \$4,413,664 cost
- T-G Excavating Contractor

November 2007



WL-2 North Drake BEFORE



WL-2 North Drake AFTER

WL-3 Porter to Hamestring

May 2006

- Construct 14,100' of 21-24" gravity sewer pipe line
- \$7,186,957 cost
- Oscar Renda Contractors

May 2007

WL-4 Gregg to Hamestring

June 2006

- Construct 24,751' of 48" gravity sewer pipe line and 3,876' of 30" sewer pressure pipe line
- \$10,613,447 cost
- Oscar Renda Contractors

December 2007



WL-4 I-540 Tunnel



WL-4 I-540 Tunnel

WL-5 Hamestring to West Plant

February 2006

- Construct 21,740' of 24" and 30" sewer force pipe lines
- \$4,752,287 cost
- Garney Construction

December 2006

WL-6 Hamestring Lift Station

August 2006

- Construct a 36 mgd capacity sewer pump station
- \$6,311,439 cost
- Brasfield & Gorrie Contractors

January 2008



WL-6 Hamestring Lift Station



WL-6 Hamestring Lift Station

WL-7 Gregg Lift Station

August 2007

- Construct a 19 mgd capacity sewer pump station
- \$1,527,000 cost
- Crossland Heavy Contractors, Inc.

April 2008

WL-8 Owl Creek Lift Station & Force Main

January 2009

- Upgrade the existing sewer pump station and install 11,600' of (estimated) 15" sewer pressure pipe line

December 2009

What is a lift station?

A point in the sewer system where the wastewater needs to be pumped (lifted) to a higher elevation so that gravity can be used to bring the wastewater to the treatment plant.

What is a force main?

A pressurized sewer line fed by a lift station; carries pumped wastewater to a point where other pumps or gravity can take over.

2009