

Westside Wastewater Facilities

Westside Wastewater Treatment Plant



SUMMARY STATUS REPORT

September 13, 2006



WESTSIDE WASTEWATER FACILITIES

SUMMARY / STATUS

September 13, 2006

The basis for today's Job Coordination Meeting was the Near Term Schedule and Action Item Agenda from the previous Summary Status Report dated August 16, 2006. The attached new Near Term Schedule dated September 13, 2006 reflects discussions and commitments provided during today's meeting for planned work activity during the next several weeks.

SUMMARY

The progress of critical construction activities continues to track as required in order to maintain Overall Project Schedule commitments.

Wall pours for Biological Unit #1 continues to track toward completion by October 30, 2006. Top slab construction for Biological Unit #1 continues with the initial pour targeted next week. Base slab pours for Biological Unit #2 have resumed in an effort to minimize inclement weather impact. Wall pours for this unit are also underway.

Base slab pours for all clarifiers are complete and wall pours for three of four clarifiers will complete as previously scheduled this week.

Underslab rough-in for the RAS/WAS Pump Station completed today and the base slab pour is retargeted to take place this week. This is approximately two weeks later than previously projected.

Structural concrete wall pours for the Flow Equalization Pump Station and Inlet Facilities continue. The placement of backfill at the Inlet Facilities, in order to release upper level caissons, is pending site retaining wall construction, which is in progress. Center pier construction and underslab pipe installation for the Grit and Scum Removal Units is now in progress and progressing as previously scheduled.

Construction of the Flow Equalization Basin began August 21, 2006, as previously scheduled. Additional schedule detail for construction of this basin is included with this update.

Building pad preparation is in progress for the start of the Operations Building construction. Underground plumbing for this structure should begin next week, although confirmation of plumbing pipe material is required. RFI #48 addresses this issue. Construction of the Operations Building as currently projected is crucial in order to support the start and flow of structural steel, masonry, and roofing activities associated with various structures. The start of building steel erection remains scheduled October 2, 2006 beginning with the North Electrical Building. Underground rough-in and base slab construction for the South Electrical Building has been completed and steel erection will follow at this structure after the North Building. The delivery of masonry block and precast must take place in order to support the October 9, 2006 scheduled start date for installation. Mortar selection for masonry block remains outstanding and must be expedited. Selection of the metal building color is also pending masonry block and mortar approval.

There were several outstanding RFI's discussed in detail during today's meeting and response is expected to be forthcoming. It was noted during today's meeting that the relocated inlet screen is not in Brasfield & Gorrie's scope of work (RFI #14). It was requested that response to RFI's #37 and #41 be expedited. The previously noted outstanding re-submittal for the Influent Screening System has now been provided for review. It was noted that the late HVAC equipment submittal will be returned this week. Priorities have been provided for review of metal building submittals, which should be expedited in order to maintain schedule commitments.

Enclosed for review are the new Near Term Schedule and Action Item Agenda dated September 13, 2006, and a copy of the updated Overall Project Schedule. Also enclosed are the current RFI, Submittal and Equipment Logs.

STATUS

SITWORK

Construction of the gas main crossing structure is complete and sleeves for utilities have been installed. Installation and tie-in of the water main is complete.

Samples for alternate clay berm material are expected to be reviewed by the engineer today.

BIOLOGICAL UNITS

The final base slab pour for Unit #1 is expected to take place during the next two weeks. Wall pours for Unit #1 continue to track to a late October 2006 date for completion. Placement of formwork for top slab construction continues with the initial top slab pour scheduled within two weeks.

The initial wall pour for Biological Unit #2 is complete. Four of twelve base slab pours for this unit are complete and three additional pours are scheduled during the next four weeks.

SOUTH ELECTRICAL BUILDING

Underslab rough-in is complete and the base slab pour this structure took place this week.

FINAL CLARIFIERS

Base slab pours for Clarifier #4 completed as projected. Wall pours for Clarifier #3 will complete this week as previously scheduled and placement of formwork for Clarifier #4 wall pours is in progress. Trough slab construction for Clarifier #1 continues.

The top slab / walkway for the Final Clarifier Splitter Box is complete.

RAS/WAS PUMP STATION

Underslab plumbing and electrical installation is now complete and the base slab pour is rescheduled to take place September 15, 2006.

FLOW EQUALIZATION BASIN

Construction activities associated with this basin began August 21, 2006.

FLOW EQUALIZATION PUMP STATION

Structural concrete wall pours to Elevation 1241 are complete and formwork for walls to Elevation 1248 is in progress.

INLET FACILITIES

Lower level wall construction is complete and damp-proofing is in progress.

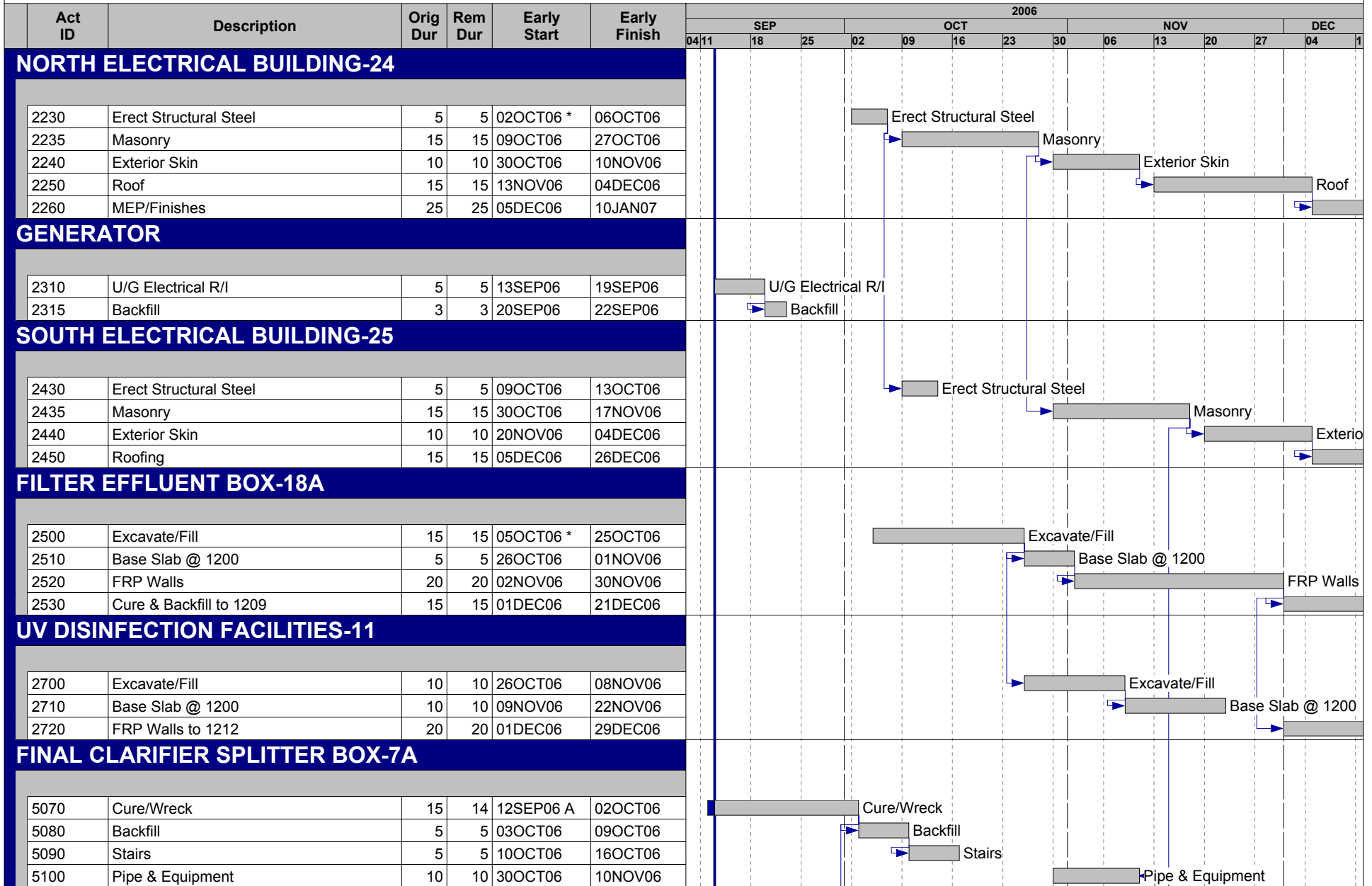
GRIT / SCUM REMOVAL UNITS

Center pier construction for Unit #1 is complete and remains targeted to complete for Unit #2 next week. The installation of underslab pipe installation for Unit #1 is complete and is in progress for Unit #2. Wall formwork for the Effluent Box is underway.

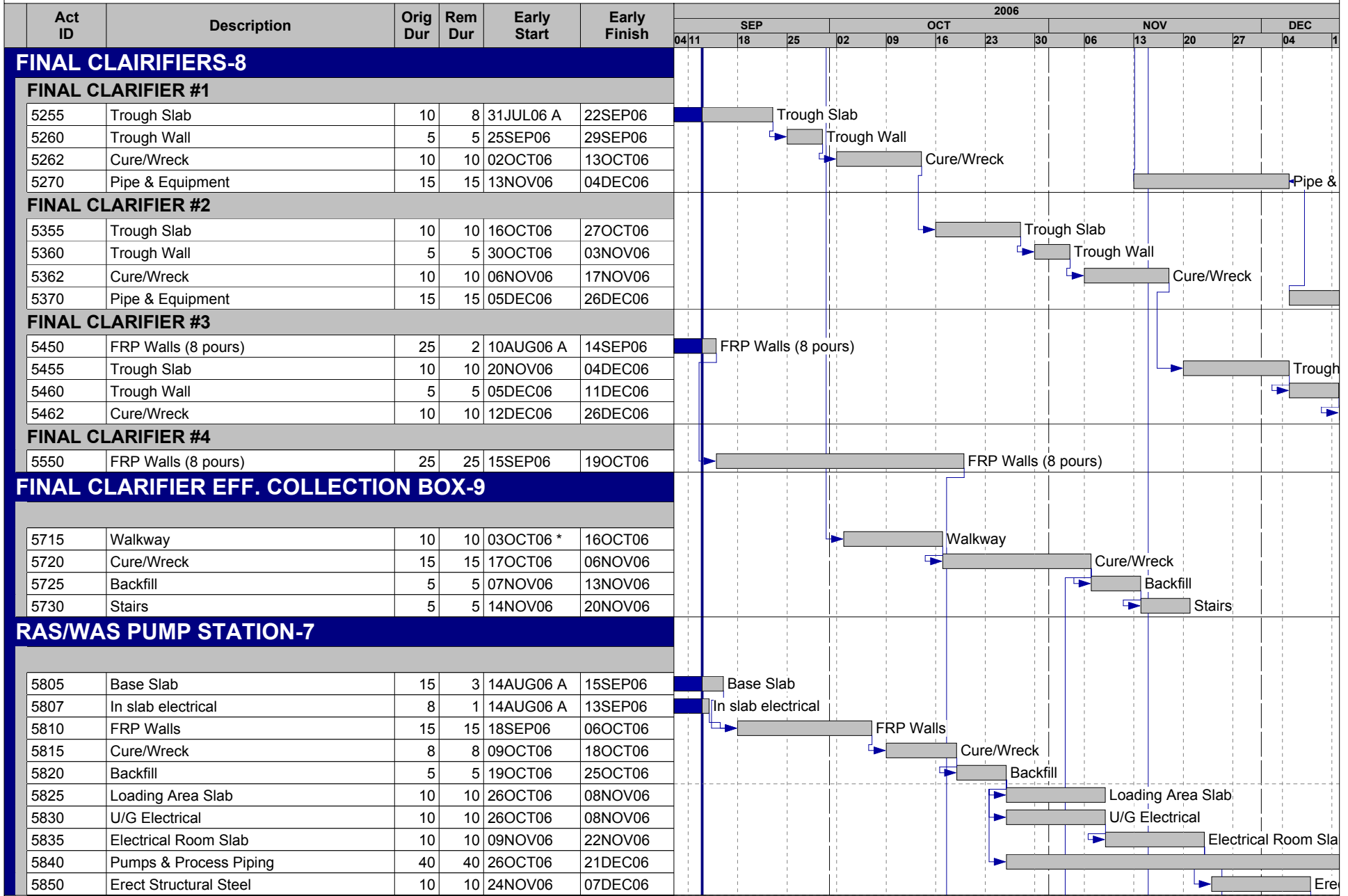
OPERATIONS BUILDING

Building pad construction for the Operations Building is in progress and will complete after approximately two days of dry weather.

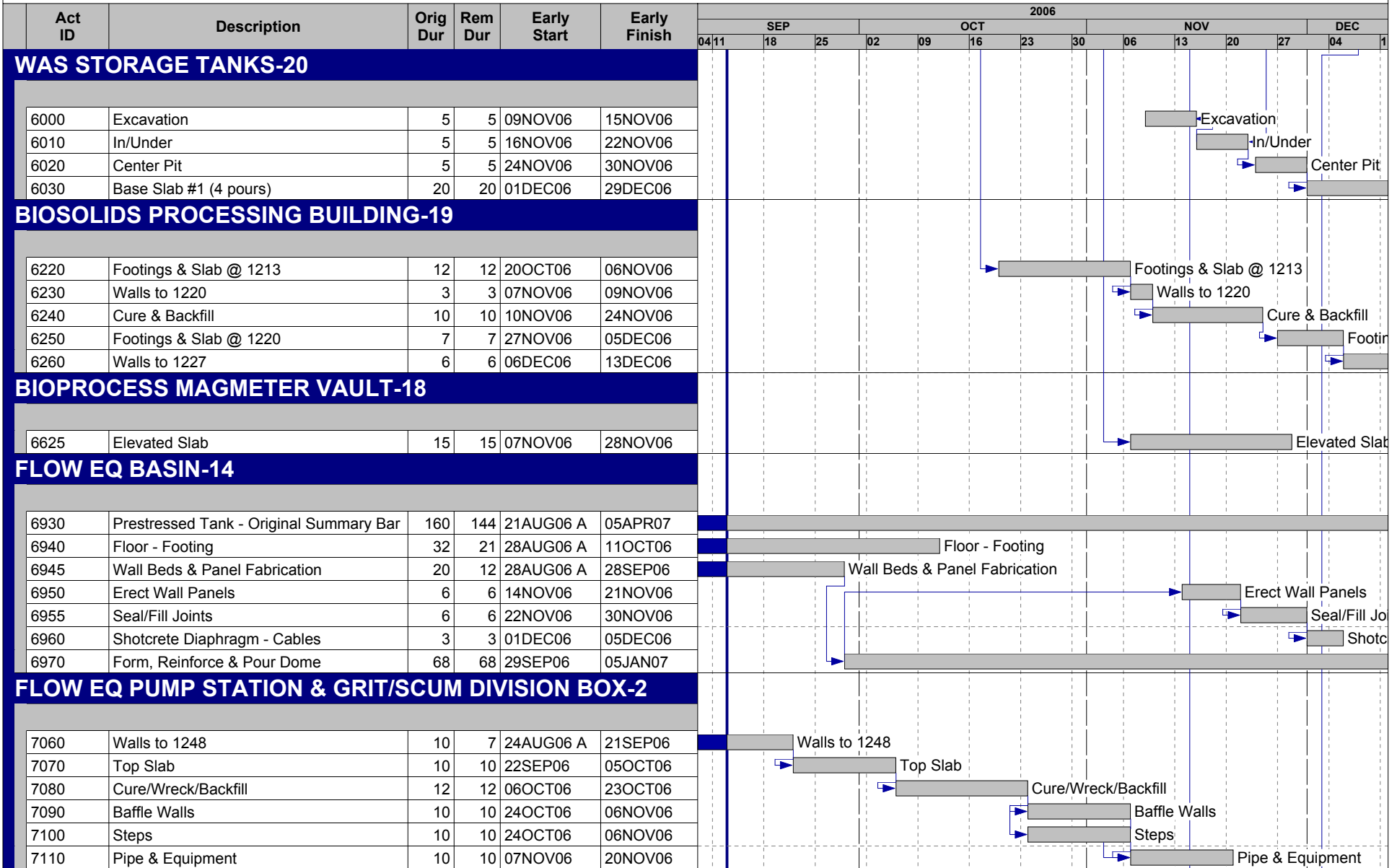
Westside Wastewater Facilities



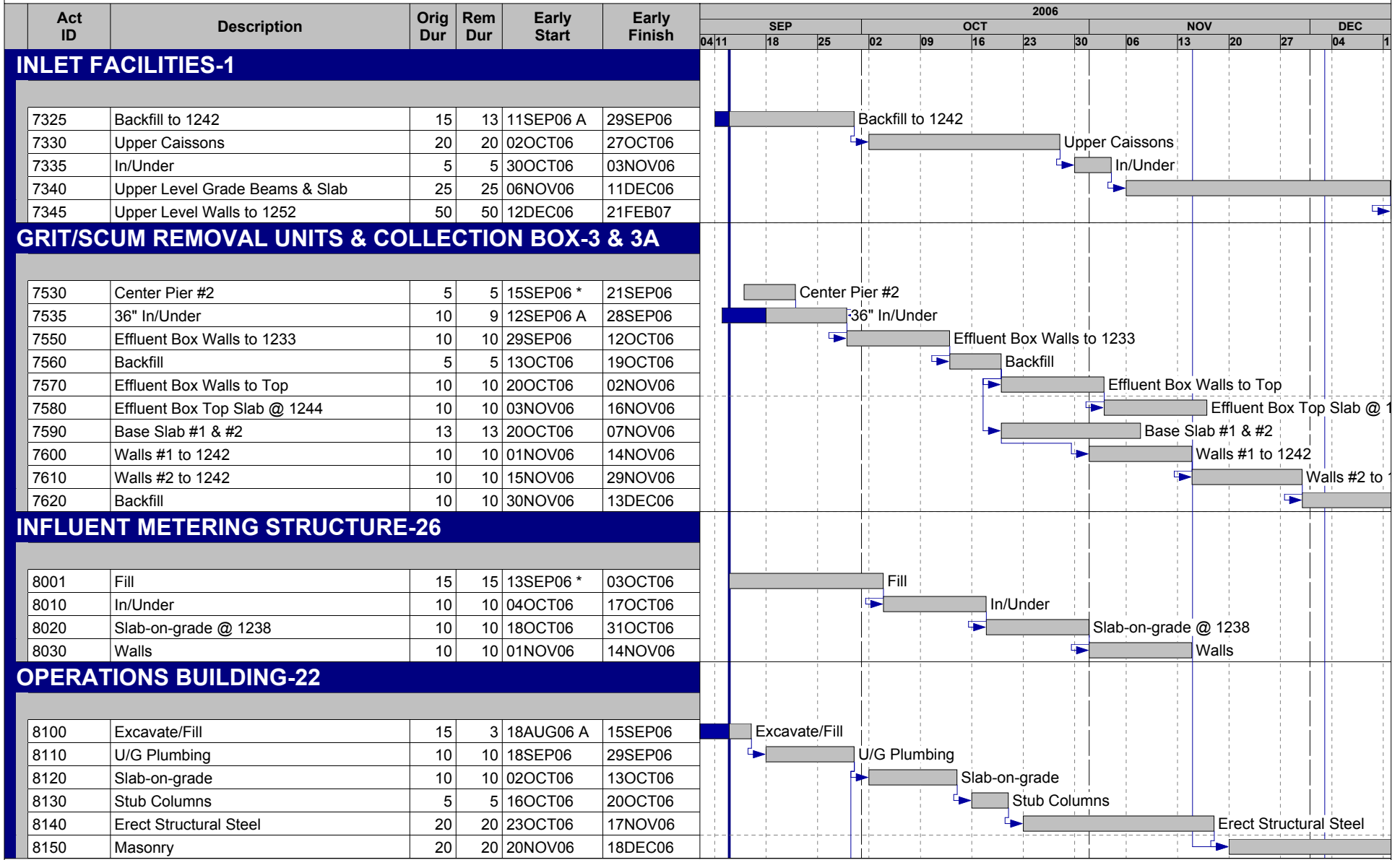
Westside Wastewater Facilities



Westside Wastewater Facilities



Westside Wastewater Facilities









SUMMARY OVERALL PROJECT SCHEDULE
