

Westside Wastewater Facilities

Westside Wastewater Treatment Plant



SUMMARY STATUS REPORT

December 11, 2007



WESTSIDE WASTEWATER FACILITIES

SUMMARY / STATUS

December 11, 2007

The basis for today's Job Coordination Meeting was the detailed Overall Project Schedule dated November 13, 2007 and the preliminary Equipment Checkout Schedule. Schedule adjustments, based on discussion and commitments provided during today's meeting, are reflected on the attached new Near Term Schedule dated December 11, 2007.

Also enclosed for review is the Action Item Agenda and the updated Overall Project Schedule reflecting remaining activities dated December 11, 2007. Additional review of the schedule will be required in order to coordinate vendor availability with scheduled functional checkout.

SUMMARY

Permanent power has been energized to the main electrical room switchgear as well as secondary switchgear for various structures of the project. All remaining switchgear is currently targeted to be energized by February 1, 2008.

Equipment functional testing is scheduled to begin the week of December 17, 2007. The new Equalization Basin will be utilized as the water source for operational flow testing. Filling of the Equalization Basin is targeted to begin January 7, 2008. The first phase of operational flow testing is targeted to begin two weeks later on January 21, 008. Preliminary phasing for operational testing is shown on the attached Overall Project Schedule.

Structural concrete pours are substantially complete for all structures.

Building structural steel erection is complete with the exception of the new Filter Facility, which is targeted to begin December 31, 2007. Masonry wall construction is complete with the exception of the Bio-Solids Processing Building, which should complete next week and the Filter Facilities, which will begin following the start of structural steel erection. Roofing and exterior skin installation has resumed for the Inlet Facilities following last week's delivery of skylight curbs. Dry-in of Buildings 19 and 10 will follow completion at the Inlet Facilities, currently targeted the week of January 1, 2008. Exterior fascia, soffit and gutter installation has resumed and is committed to complete this month for all available structures.

Process equipment installation, electrical and HVAC and plumbing activities continue as required throughout the project. With the exception of two VFD's for structure 4, there were no critical outstanding equipment issues noted during today's meeting.

Painting continues throughout the project. Structure thorocoat installation is targeted to complete early February 2008 following installation of remaining sidewalks. Drywall installation and finishing for the Operations Building is substantially complete and installation of follow-on ceiling, wall and floor finishes is targeted to begin in approximately two weeks. Storefront installation for the Operations Building is complete and delivery of windows for all other structures is scheduled this week.

Roadway rough grading and light pole base installation is underway. Site fine grading and grassing is also in progress.

Project substantial completion based on schedule discussion during today's meeting remains targeted for May 2008.

STATUS

SITework

Installation of the gas main is substantially complete and gas availability is scheduled by December 31, 2007. Installation of site water and drain piping continues as scheduled and testing and chlorination is targeted to begin in approximately three weeks. Site ductbank installation remains targeted to complete the week of January 1, 2008.

BIOLOGICAL UNITS

Mechanical and electrical activities are substantially complete and equipment checkout is targeted to begin next week.

OPERATIONS BUILDING

The installation of exterior fascia, soffit and gutters is substantially complete. Storefront installation is complete. Interior drywall hanging and finishing is substantially complete and prime painting is underway. Electrical equipment installation is complete. Above ceiling punch is scheduled next week and acoustical ceiling grid is targeted to begin December 27, 2007.

RAS/WAS PUMP STATION

Exterior sidewalks, fascia and soffit installation is complete. Electrical equipment installation is complete and switchgear has been energized.

FILTER FACILITIES

The electrical room slab was poured the week of November 26, 2007. Building structural steel erection is targeted to start December 31, 2007. The installation and inspection of filter block material is in progress and expected to complete next week. Interior process pipe installation is underway.

POST AERATION BASIN

Sidewalks and slab-on-grade construction is complete. Installation of aeration equipment and gates is in progress and targeted to complete next week.

POST AERATION BLOWER BUILDING

Electrical switchgear for this structure has been energized.

CHEMICAL FEED BUILDING

Exterior building skin installation is complete. Blower room piping is underway. Electrical equipment installation is complete. The installation of HVAC equipment is in progress. The electrical switchgear for this structure has been energized.

BIO-SOLIDS PROCESSING BUILDING

Structural steel erection is complete. Masonry wall construction is in progress and remains targeted to complete next week. Roof installation is retargeted to begin January 7, 2008 following completion at the Inlet Facilities. Interior painting is underway. Installation of stairs and handrail is in progress. Electrical raceway and light fixture installation is in progress at the First Floor level.

FLOW EQ. PUMP STATION

Masonry wall construction is complete. Roof slab construction is in progress and should complete this week. Process piping and equipment installation is underway.

ODOR CONTROL BUILDING

The installation of FRP and stainless steel duct installation continues with completion targeted, weather permitting, this week. Exterior fascia and soffit installation has resumed and is committed to complete this month. Exterior sidewalks and pad construction is complete and handrail installation is in progress. Electrical equipment installation is complete. Electrical raceway and wire installation is underway. Light fixture installation for this structure is complete.

GRIT/SCUM REMOVAL UNITS

The installation of equipment and miscellaneous steel is complete. Raceway and wire installation is in progress. A pre-grout check is complete and grouting of the equipment is targeted to take place next week.

GRIT/SCUM PUMP STATION

Exterior fascia and soffit installation has resumed and should complete this week. Prime painting is complete. Sidewalk installation is complete. Door and hardware installation is complete. Electrical equipment is complete and switchgear has been energized.

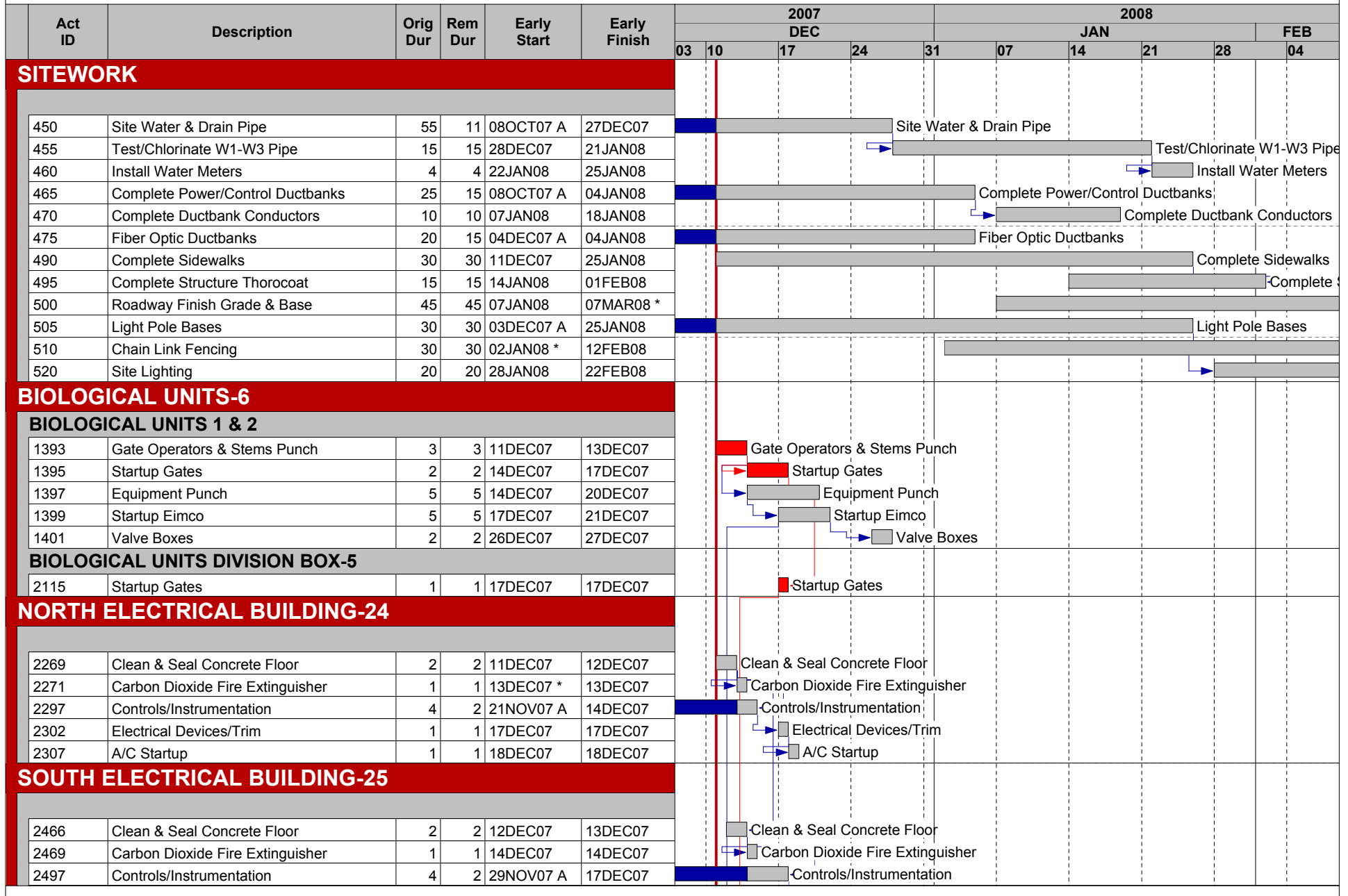
INLET FACILITIES

Skylight curb installation is in progress and roofing for this structure has resumed. Completion of roofing is anticipated next week with exterior skin completion now scheduled by January 7, 2008. Process equipment and piping installation is in progress. Interior painting is underway and electrical equipment installation has started.

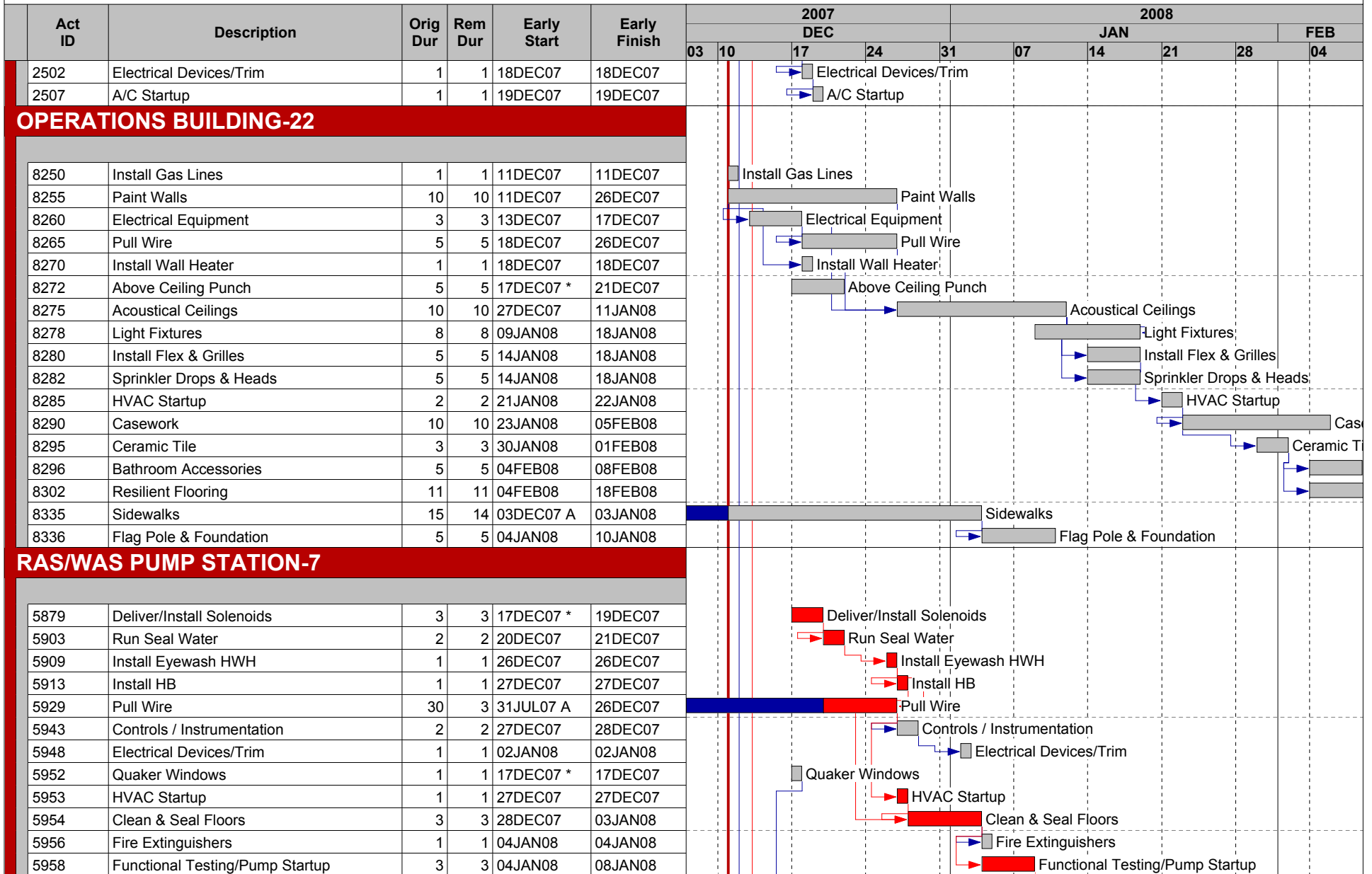
INFLUENT METERING STRUCTURE

The installation of underground pipe for this structure is underway and slab construction remains targeted to take place the week of January 7, 2008.

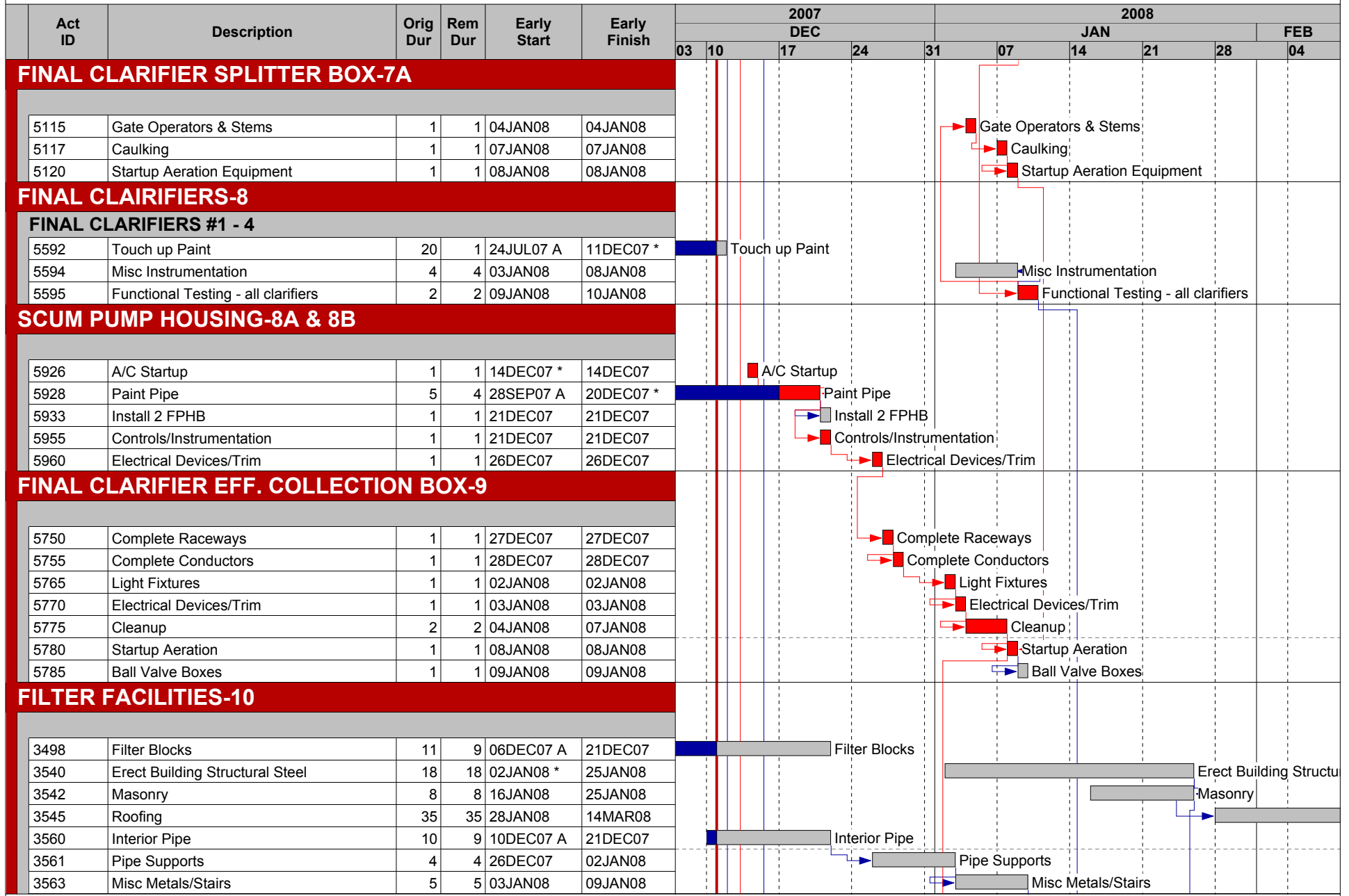
Westside Wastewater Facilities



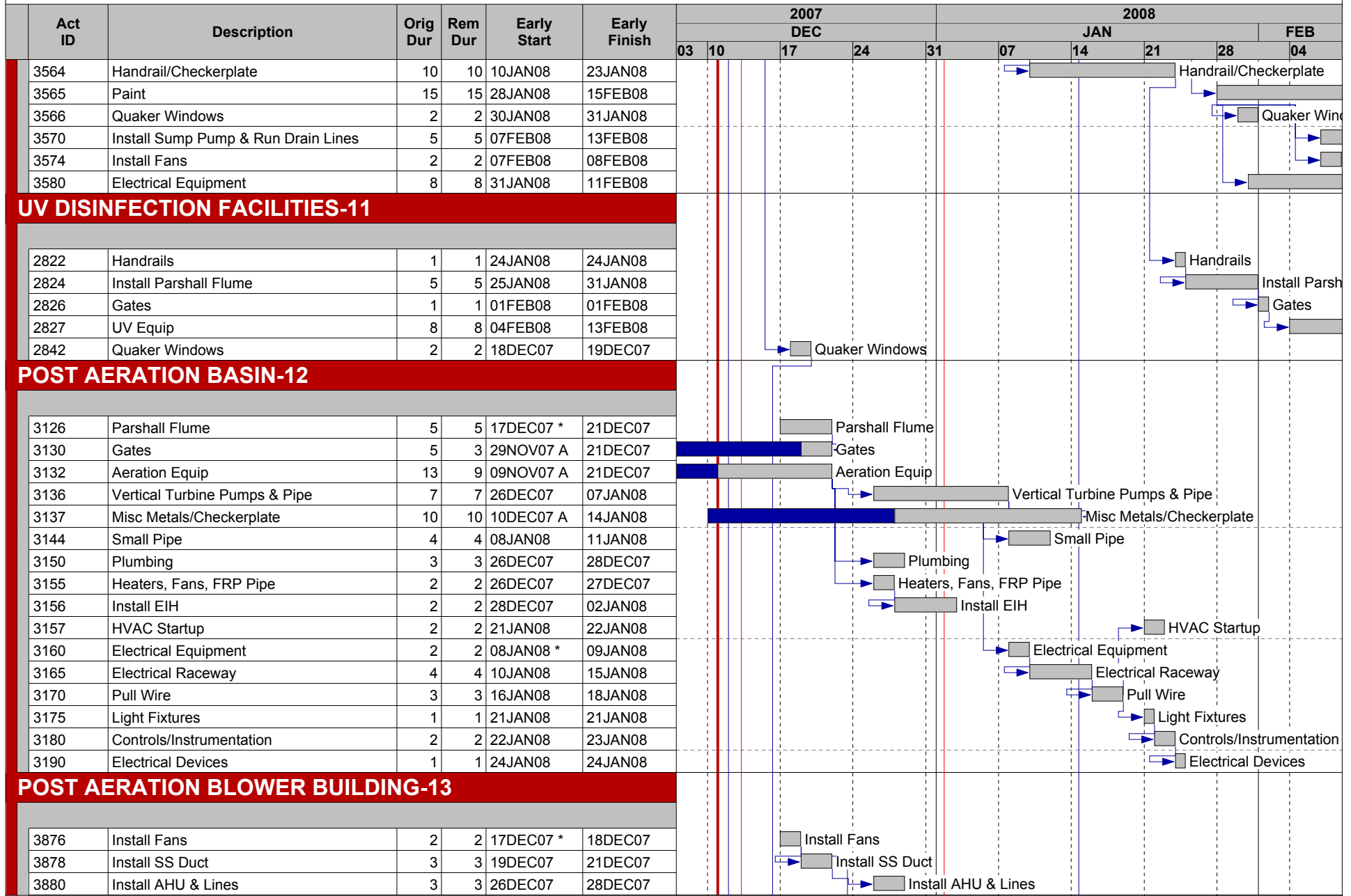
Westside Wastewater Facilities



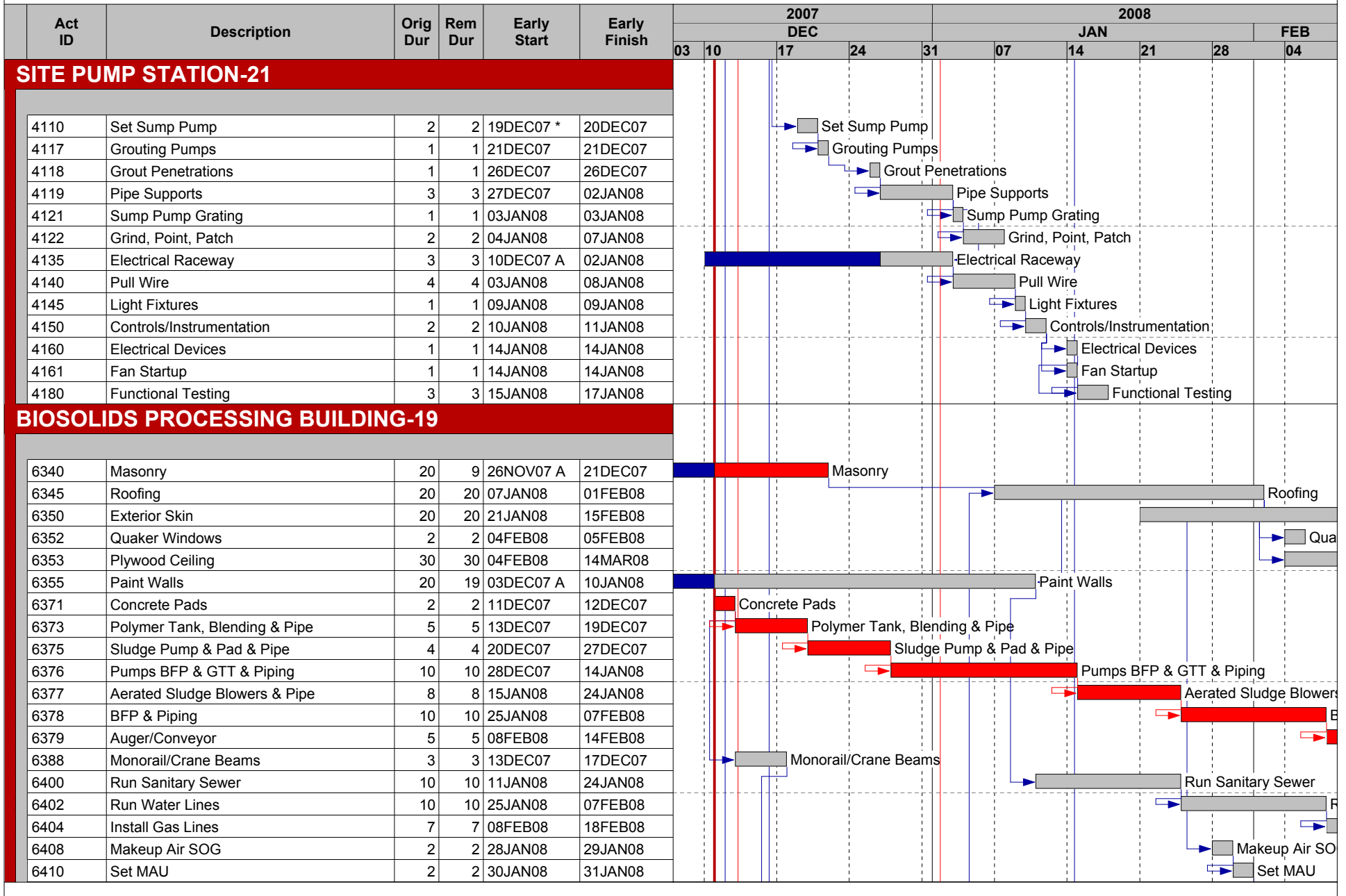
Westside Wastewater Facilities



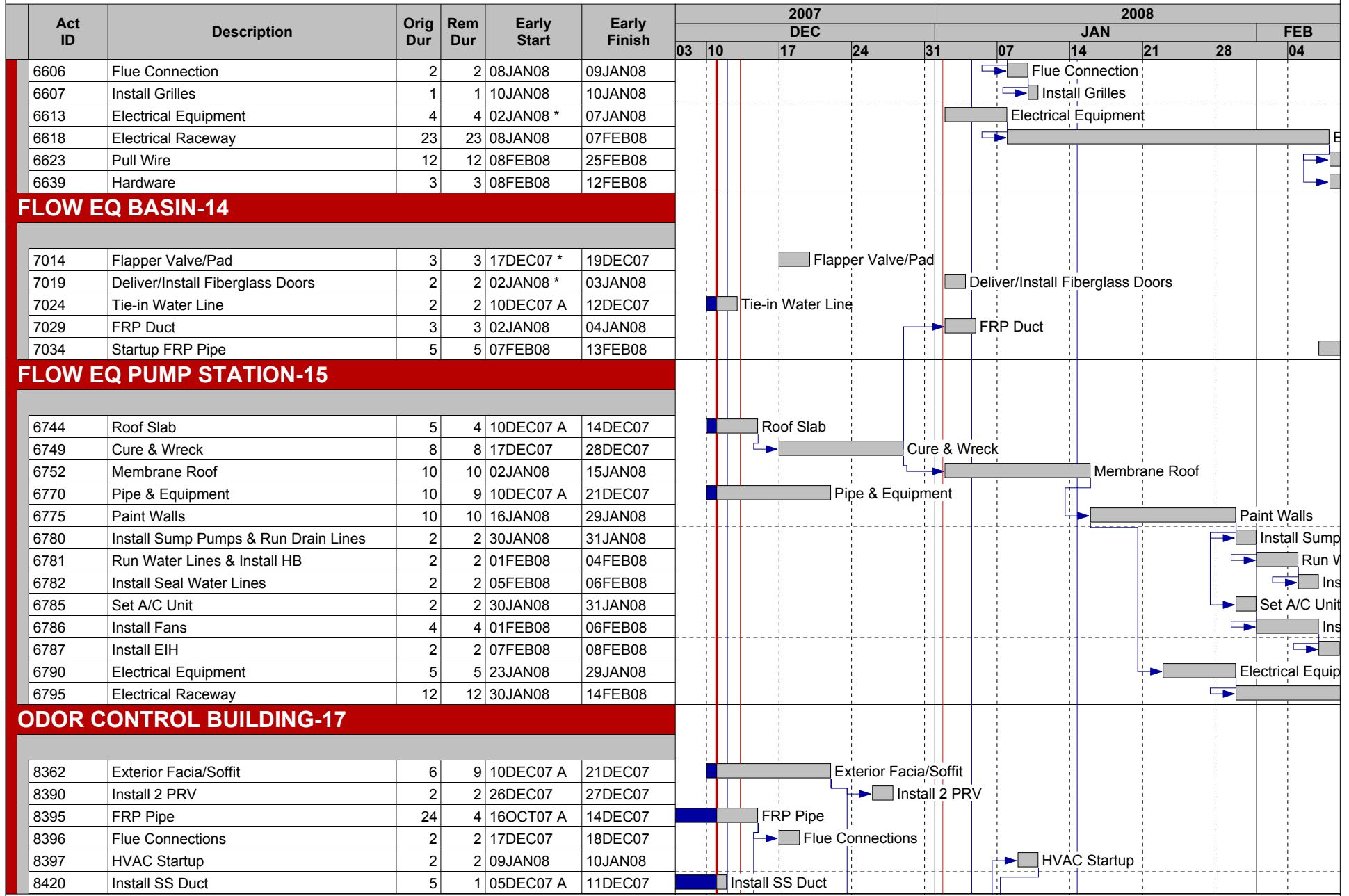
Westside Wastewater Facilities



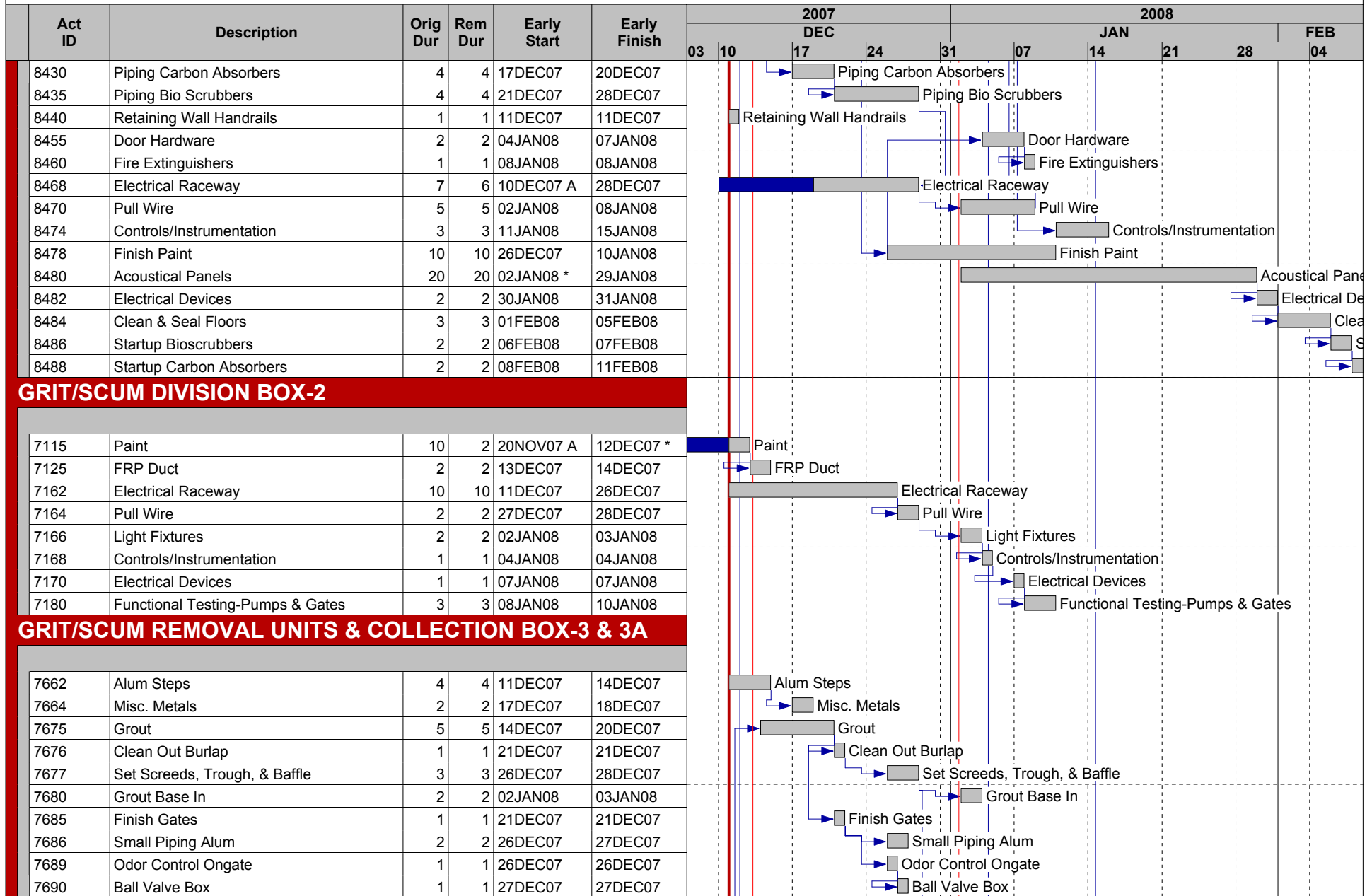
Westside Wastewater Facilities



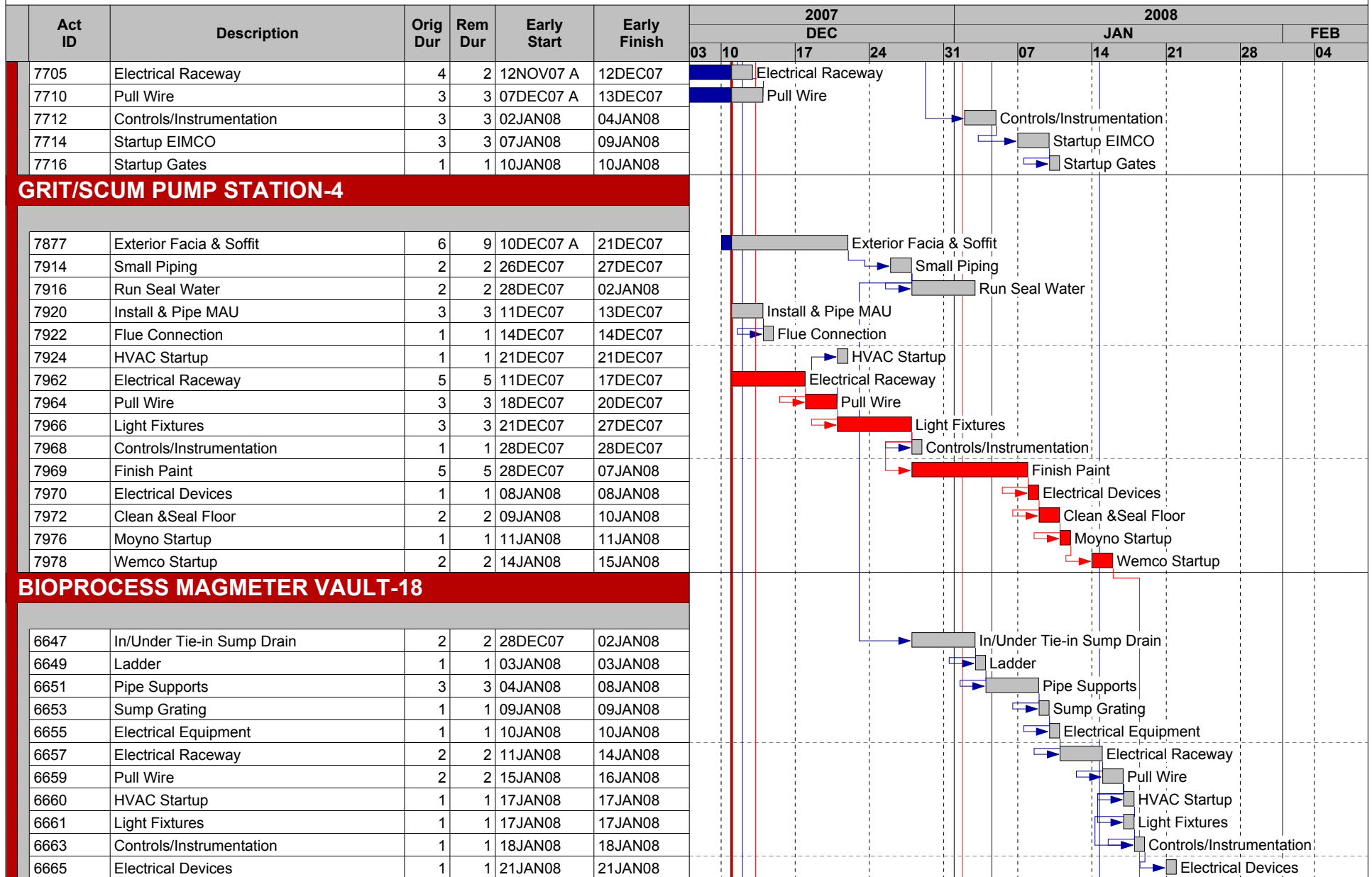
Westside Wastewater Facilities



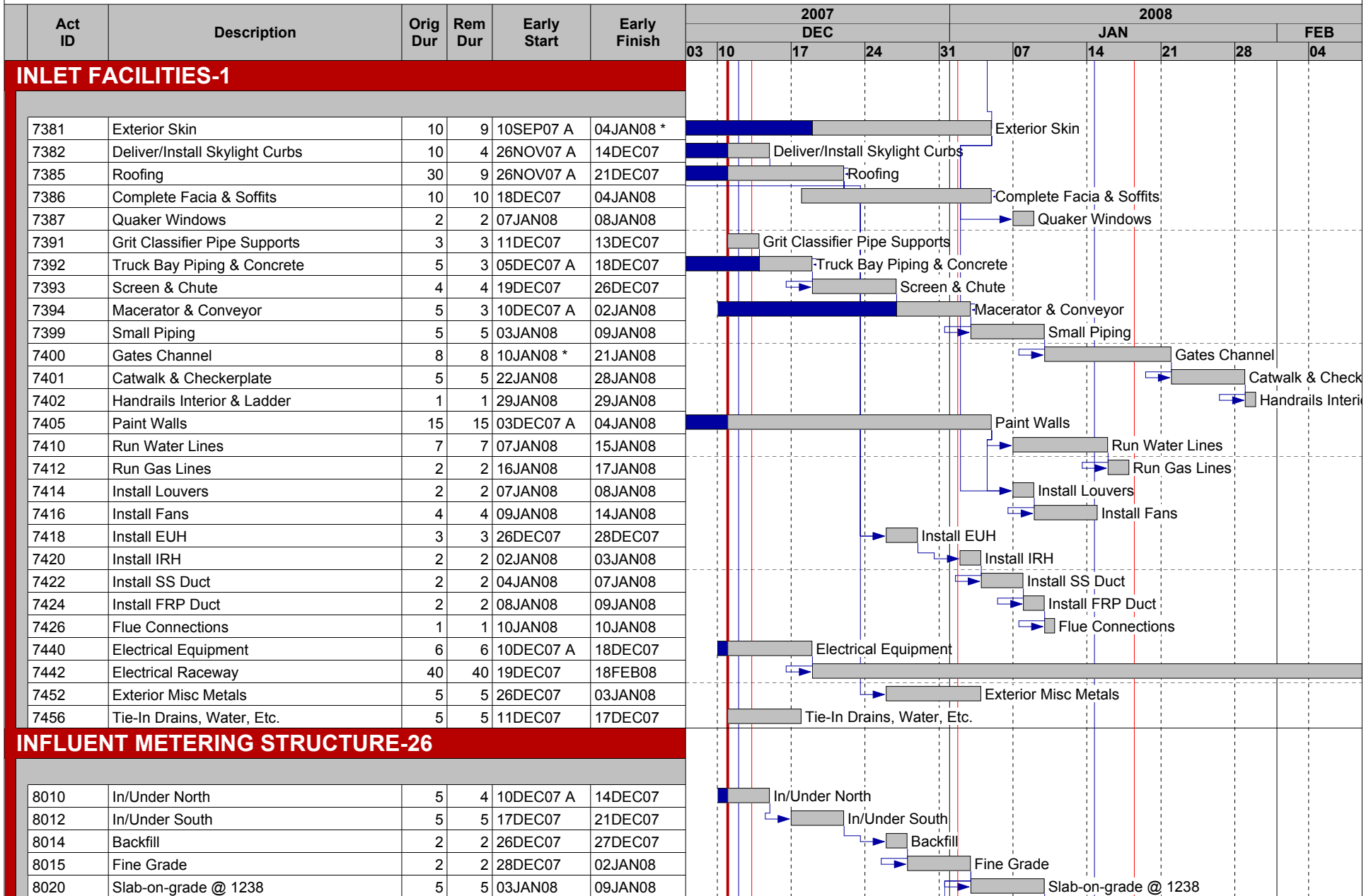
Westside Wastewater Facilities



Westside Wastewater Facilities



Westside Wastewater Facilities



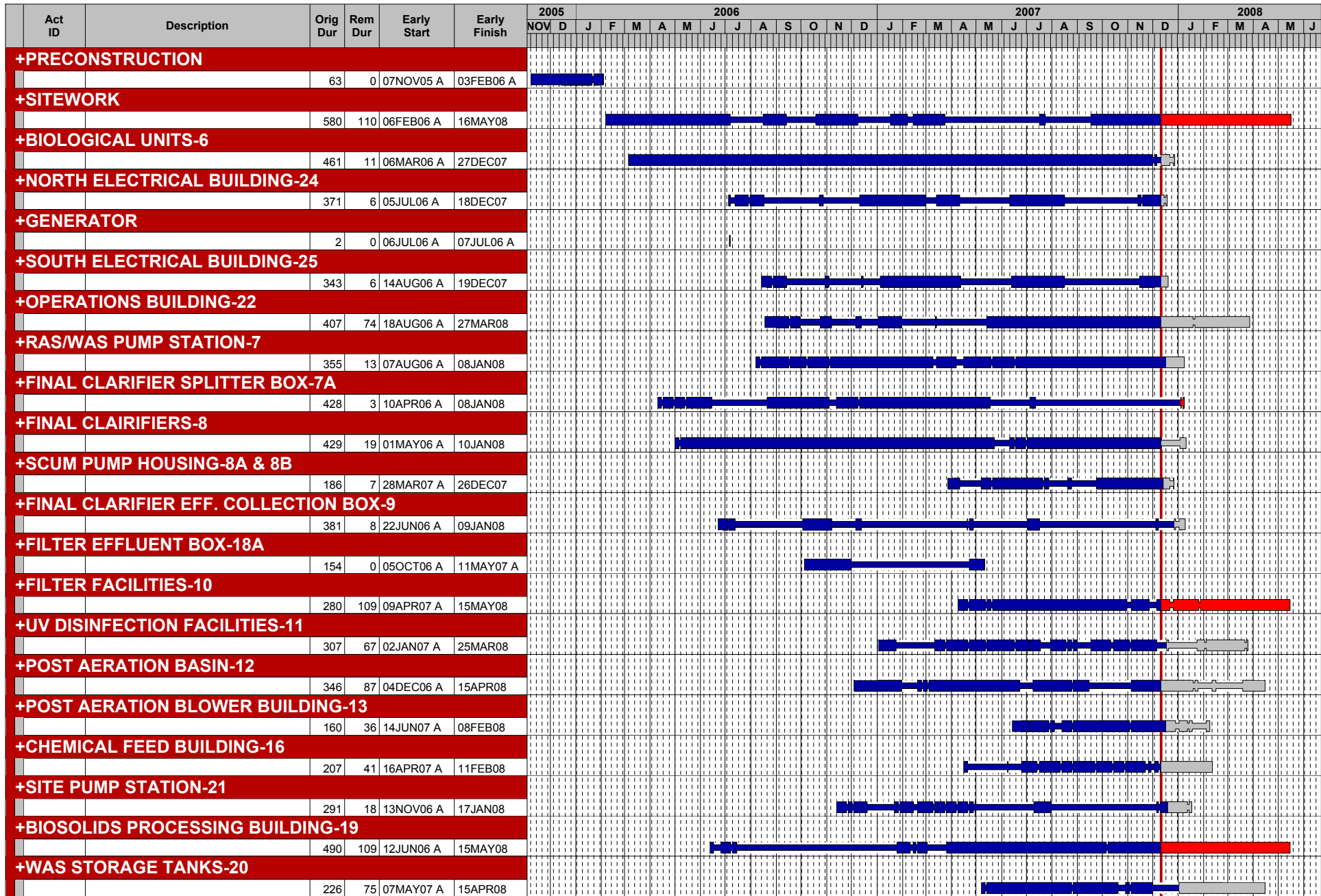








SUMMARY OVERALL PROJECT SCHEDULE



Data date 11DEC07
 Start date 07NOV05
 Finish date 16MAY08
 Must finish date 30MAY08
 © Primavera Systems, Inc.

Page 1A of 2A
 Summary Schedule

Brasfield & Gorrie
Westside Wastewater Facilities

By Milestone Consultants

- Early bar
- Progress bar
- Critical bar
- Start milestone point
- Finish milestone point

